

# A1004EVR-316S-CM

## Double Wall Poly/Poly

### Spill Containment

#### Specifications

- Replaceable; easily repair or replace primary & secondary units from grade without breaking concrete
- 5 gal capacity
- Screw on
- Weights: Lid 15.9 lbs, Total: 78 lbs

#### Materials

- Cast iron rim
- Cast iron water-resistant lid, built-in handle & exclusive triple wiper seal

#### Installation

- Grade level
- Installs 16" on center

#### Components

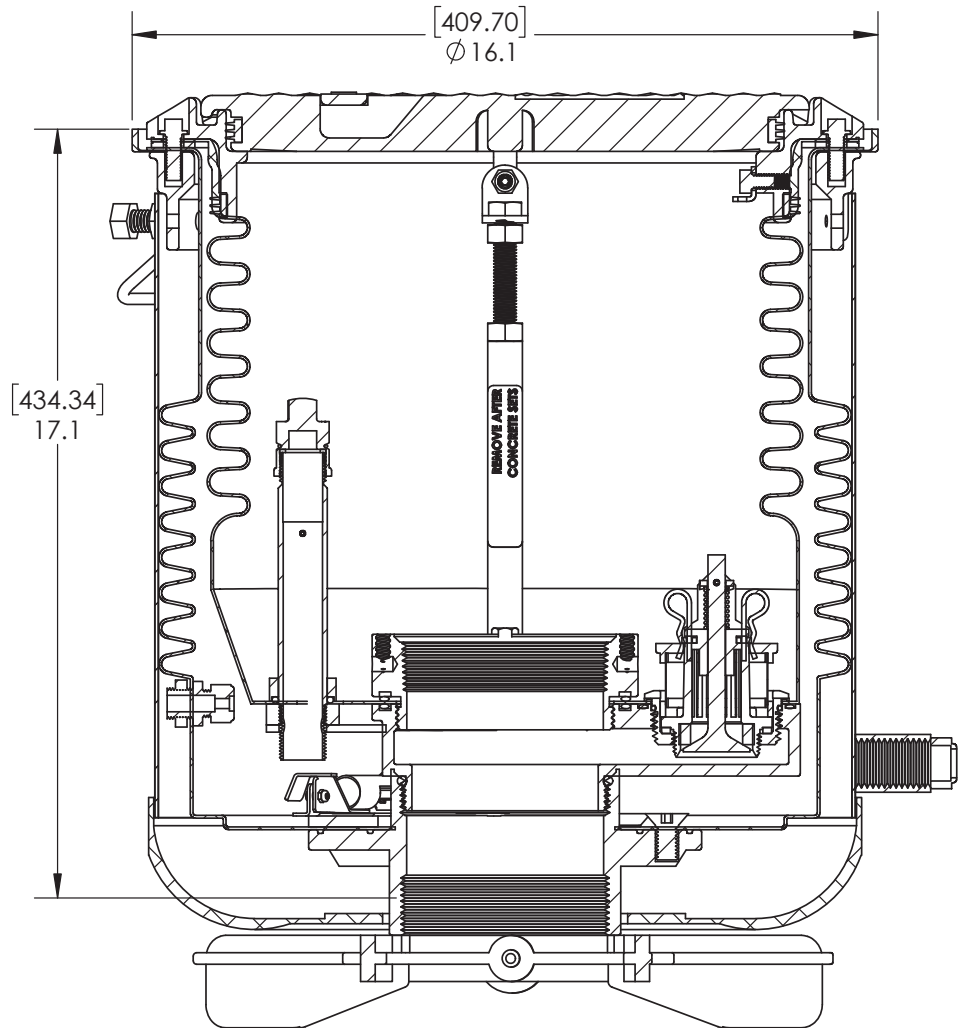
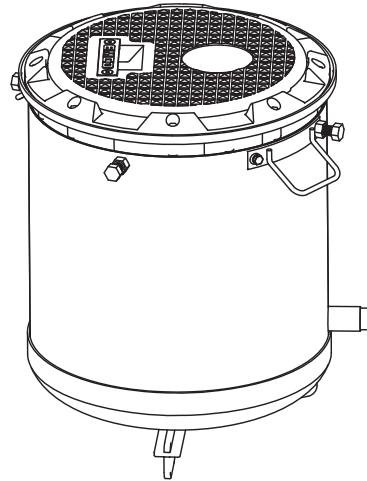
- Drain valve
- Liquid Sensor

#### Approvals

- ULC Listed MH21149
- FL DEP # EQ-741
- NC DENR
- MO DNR
- Lid meets H20 Load Rating

#### Color Variant Part Numbers

Model No.	Rim/Lid
A1004EVR-316S-CM	Black
A1004EVR-316S-CMP	Black



EMCO WHEATON RETAIL CORP.  
2300 INDUSTRIAL PARK DRIVE  
WILSON, N.C. 27893  
emcoretail.com

**DO NOT SCALE DRAWING-WORK TO DIMENSIONS SHOWN**  
DIMENSIONS ARE IN INCHES (DIMENSIONS IN BRACKETS ARE IN MILLIMETERS)

UNLESS OTHERWISE SPECIFIED  
DECIMALS .X ± .030 .XX ± .015 .XXX ± .005 ANGLES ± 1°  
CASTING TOLERANCES TO INDUSTRY STANDARDS  
MACHINED SURFACES 125 RMS REMOVE ALL BURRS

THE INFORMATION AND DESIGN DISCLOSED  
BY AND THE COPYRIGHT IN THIS DRAWING  
ARE THE PROPERTY OF EMCO WHEATON  
RETAIL CORP. AND CANNOT BE USED  
WITHOUT WRITTEN PERMISSION.

SYM	REVISIONS	DATE	BY

PART DESCRIPTION  
DW SPILL 5 GAL W/DRAIN +SENSOR

SIZE	DRAWING NUMBER.	PAGE	REV.
A	A1004EVR-316S-CM	1/1	B