

A1004EVR-316S

Double Wall Poly/Poly Spill Containment

Specifications

- Replaceable; easily repair or replace primary & secondary units from grade without breaking concrete
- 5 gal capacity
- Screw on
- Weights: Lid 15.9 lbs, Total: 84 lbs

Materials

- Cast iron rim
- Cast iron water-resistant lid, built-in handle & exclusive triple wiper seal

Installation

- Grade level
- Installs 16" on center

Components

- EZ-Gage to monitor interstitial space at a glance
- Drain valve

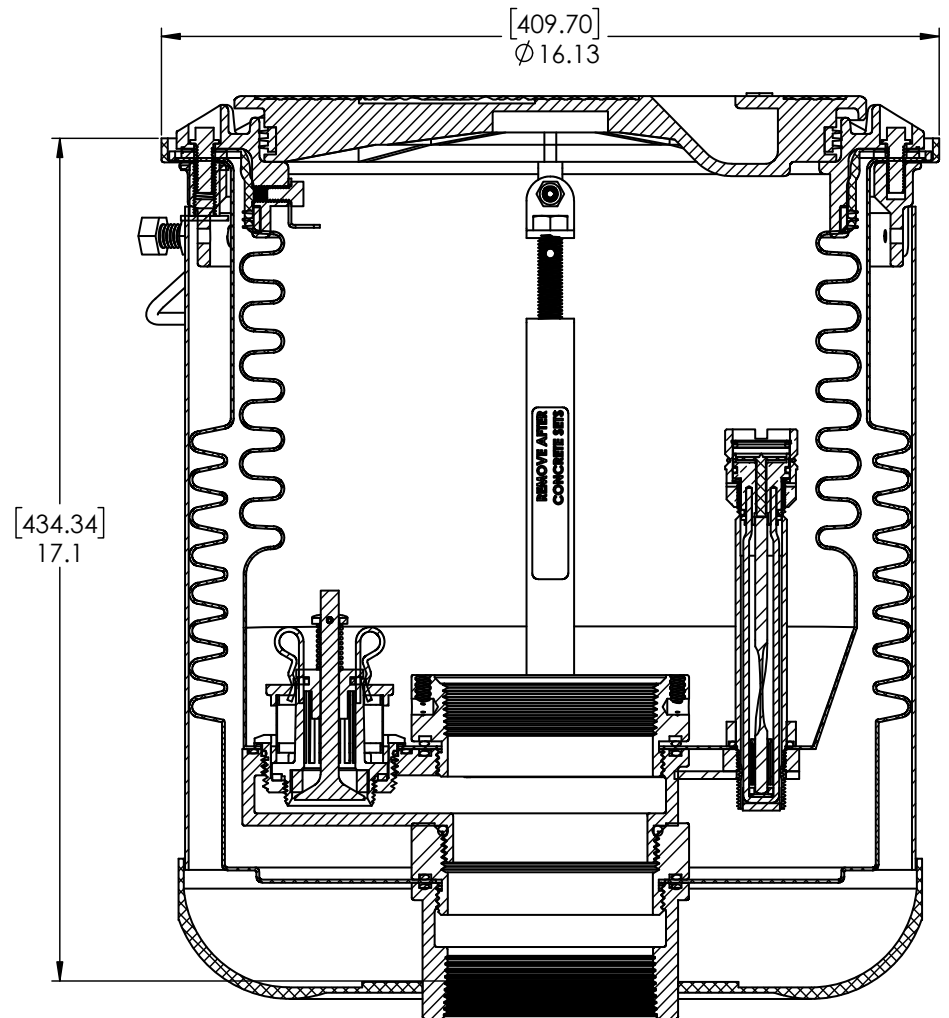
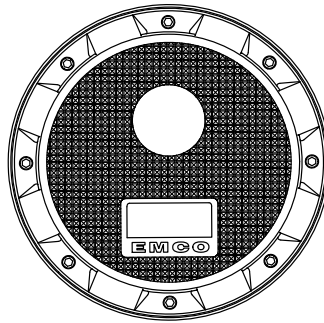
Approvals

- Phase I EVR Executive Order VR-105
- ULC Listed MH21149
- FL DEP # EQ-741
- NC DENR
- MO DNR
- Lid meets H20 Load Rating

Color Variant Part Numbers

Model No.	Rim/Lid	Adapter/Cap
A1004EVR-316S	Black	N/A
A1004EVR-316SX	Black	Fill*

*Includes A0030-124S Fill Swivel Adapter and A0097-005 Fill Cap



EMCO WHEATON RETAIL CORPORATION
WHEATON RETAIL 2300 INDUSTRIAL PARK DRIVE
WILSON, NC 27893

DO NOT SCALE DRAWING-WORK TO DIMENSIONS SHOWN
DIMENSIONS ARE IN INCHES (DIMENSIONS IN BRACKETS ARE IN MILLIMETERS)

UNLESS OTHERWISE SPECIFIED		DRAWN BY	DATE	USED ON
DECIMALS	ANGLES	GEB	7/9/19	
.X ± .030 .XX ± .015 .XXX ± .005 ± 1°		CHECKED BY	DATE	PROJECT NUMBER
CASTING TOLERANCES TO INDUSTRY STANDARDS MACHINED SURFACES 125 RMS REMOVE ALL BURRS		APPROVED BY	DATE	SCALE
THE INFORMATION AND DESIGN DISCLOSED BY AND THE COPYRIGHT IN THIS DRAWING ARE THE PROPERTY OF EMCO WHEATON RETAIL CORP. AND CANNOT BE USED WITHOUT WRITTEN PERMISSION.				N/A
MATERIAL		WEIGHT		CASTING NUMBER
SEE NOTE				

SYM	REVISIONS	DATE	BY
PART NAME			
DOUBLE WALL 16" CENTER NPT W/ EVR DRAIN			
SIZE	DRAWING NUMBER	PAGE	REV
A	A1004EVR-316S	1 OF 1	B