

# A1004EVR-317SM100

## Double Wall Stainless Steel

### Primary/Poly Secondary

### Spill Containment

#### Specifications

- Replaceable; easily repair or replace primary & secondary units from grade without breaking concrete
- 5 gal capacity
- Screw on
- Weights: Lid 15.9 lbs, Total: 93.3 lbs

#### Materials

- Cast iron rim
- Cast iron water-resistant lid, built-in handle & exclusive triple wiper seal

#### Application

- Grade level
- Installs 16" on center

#### Components

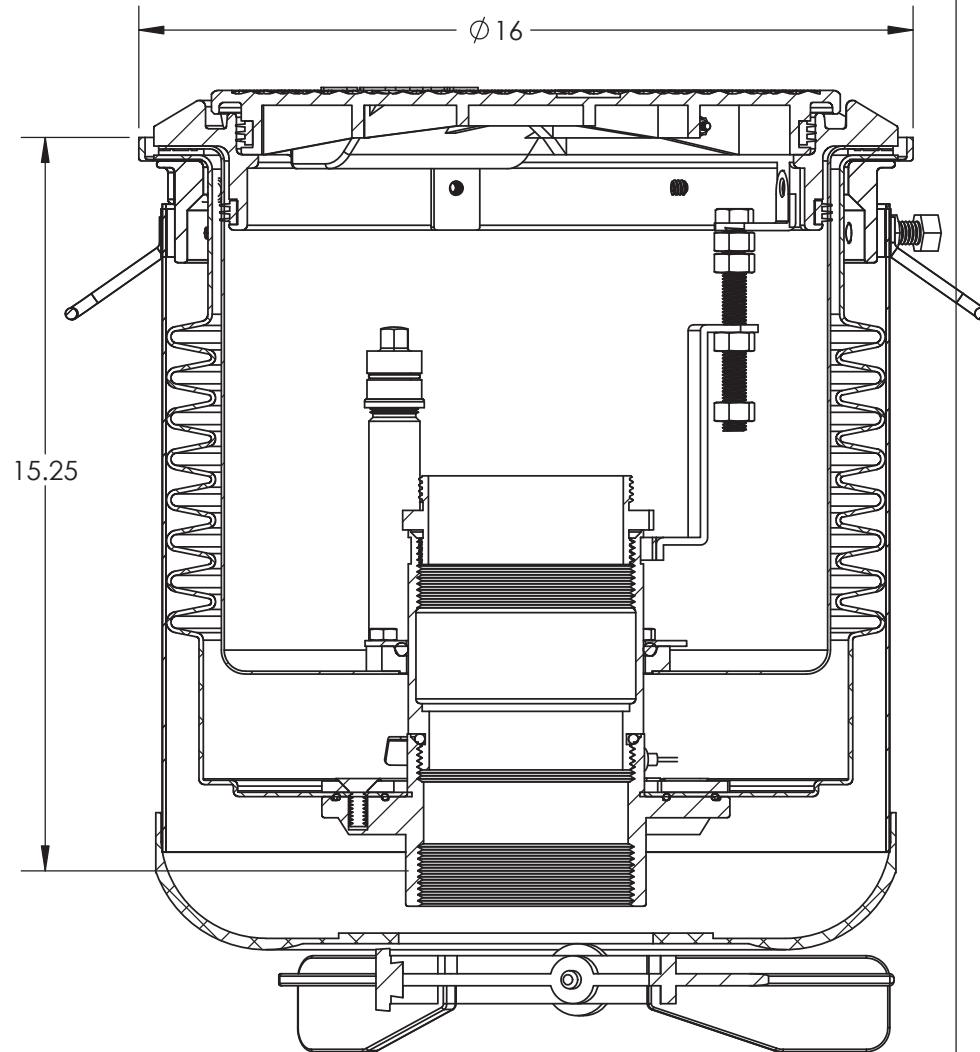
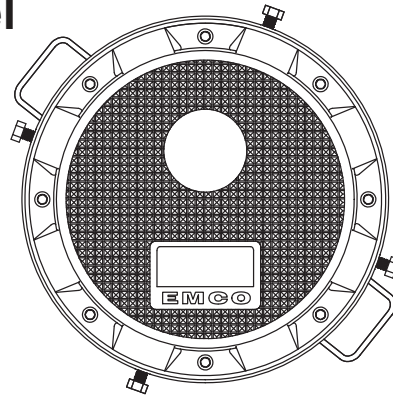
- Liquid Sensor

#### Approvals

- Phase I EVR Executive Order VR-105
- ULC Listed MH21149
- FL DEP # EQ-741
- NC DENR
- MO DNR
- Lid meets H2O Load Rating

#### Color Variant Part Numbers

Model No.	Rim/Lid
A1004EVR-317SM100	Black
A1004EVR-317SM101	White
A1004EVR-317SM102	Red



EMCO WHEATON RETAIL CORP.  
2300 INDUSTRIAL PARK DRIVE  
WILSON, N.C. 27893  
[emcoretail.com](http://emcoretail.com)

**DO NOT SCALE DRAWING-WORK TO DIMENSIONS SHOWN**  
DIMENSIONS ARE IN INCHES (DIMENSIONS IN BRACKETS ARE IN MILLIMETERS)

UNLESS OTHERWISE SPECIFIED

DECIMALS .X ± .030 .XX ± .015 .XXX ± .005 ANGLES ± 1°  
CASTING TOLERANCES TO INDUSTRY STANDARDS  
MACHINED SURFACES 125 RMS REMOVE ALL BURRS

THE INFORMATION AND DESIGN DISCLOSED BY AND THE COPYRIGHT IN THIS DRAWING ARE THE PROPERTY OF EMCO WHEATON RETAIL CORP. AND CANNOT BE USED WITHOUT WRITTEN PERMISSION.

DRAWN BY	DATE	USED ON	CASTING NUMBER
GEB	7/9/19		

SIZE	DRAWING NUMBER.	PAGE	REV.
A	A1004EVR-317SM100	1/1	A

SYM	REVISIONS	DATE	BY
A	MARKETING	7/9/19	GEB

PART DESCRIPTION  
DW, 16" CENTER, NPT, N/DRAIN  
SST PRI, POLY SEC, CAST RIM/LID +SENSOR