

A1004EVR-317SS100

Double Wall Poly/Stainless Steel Spill Containment

Specifications

- Replaceable; easily repair or replace primary & secondary units from grade without breaking concrete
- 5 gal capacity
- Screw on
- Weights: Lid 15.9 lbs, Total: 93.3 lbs

Materials

- Stainless Steel primary containment
- HDPE Secondary containment vessel
- Cast iron rim
- Cast iron water-resistant lid, built-in handle & exclusive triple wiper seal
- Stainless steel bolts and Nitrile seals on primary flange

Application

- Grade level
- Installs 16" on center

Components

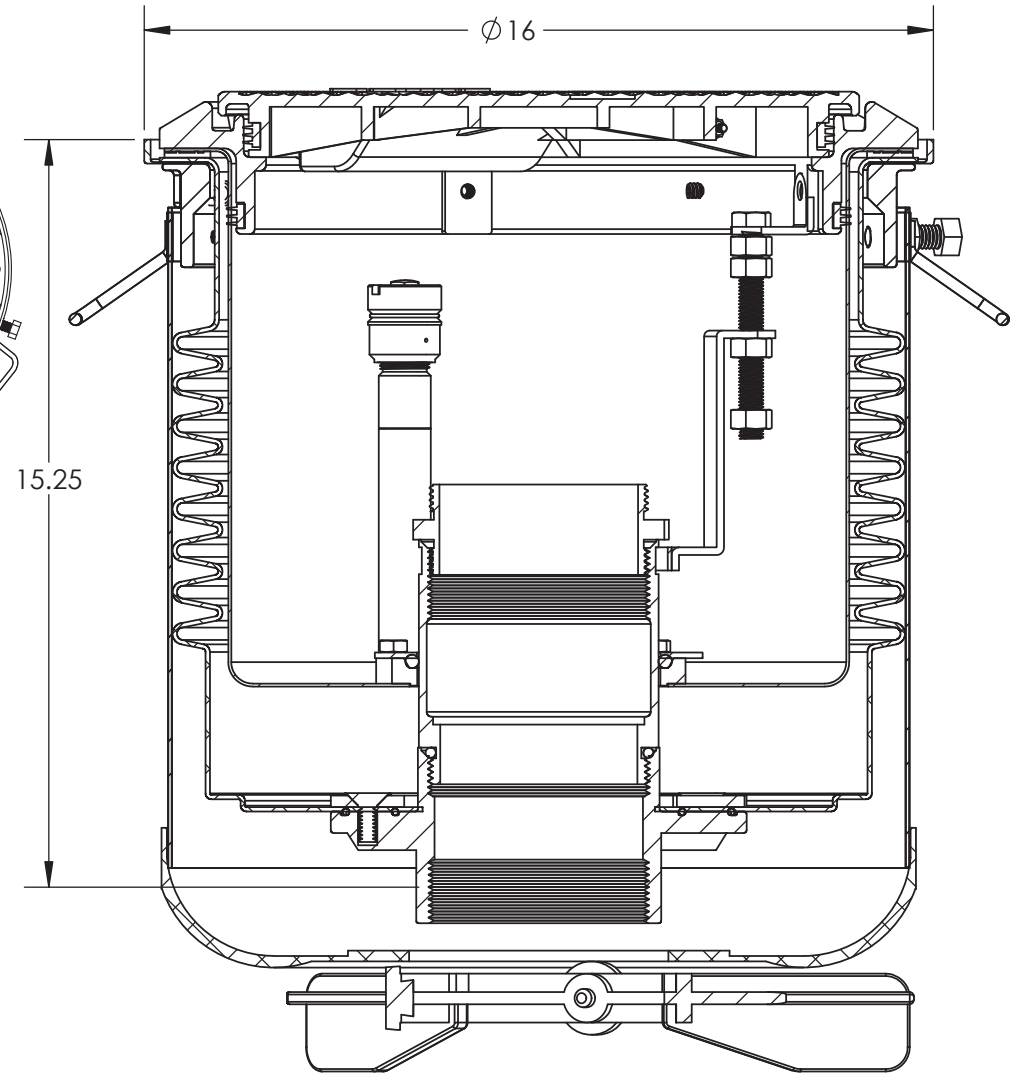
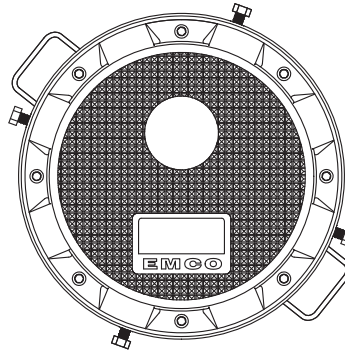
- EZ-Gage to monitor interstitial space at a glance
- Powder coated adapter fitting
- SST adapter coupling
- Non-corrosive gravel guard

Approvals

- Phase I EVR Executive Order VR-105
- ULC Listed MH21149
- FL DEP # EQ-741
- NC DENR
- MO DNR
- Lid meets H20 Load Rating

Color Variant Part Numbers

Model No.	Rim/Lid	A0996 ID Tag
A1004EVR-317SS100	Black	-----
A1004EVR-317SS101	White	Regular
A1004EVR-317SS102	Red	Premium
A1004EVR-317SS103	Yellow	Diesel
A1004EVR-317SS104	Orange	Vapor
A1004EVR-317SS106	Bronze	E85
A1004EVR-317SS107	White	E0



EMCO WHEATON RETAIL CORP.
2300 INDUSTRIAL PARK DRIVE
WILSON, N.C. 27893
emcoretail.com

DO NOT SCALE DRAWING-WORK TO DIMENSIONS SHOWN
DIMENSIONS ARE IN INCHES (DIMENSIONS IN BRACKETS ARE IN MILLIMETERS)

UNLESS OTHERWISE SPECIFIED
DECIMALS .X ± .030 .XX ± .015 .XXX ± .005 ANGLES ± 1°
CASTING TOLERANCES TO INDUSTRY STANDARDS
MACHINED SURFACES 125 RMS REMOVE ALL BURRS

THE INFORMATION AND DESIGN DISCLOSED BY AND THE COPYRIGHT IN THIS DRAWING ARE THE PROPERTY OF EMCO WHEATON RETAIL CORP. AND CANNOT BE USED WITHOUT WRITTEN PERMISSION.

DRAWN BY NPC	DATE 6/16/2017	USED ON	CASTING NUMBER
-----------------	-------------------	---------	----------------

SYM	REVISIONS	DATE	BY
PART DESCRIPTION			
DW, 16" CENTER, NPT, N/DRAIN SST PRI, POLY SEC, CAST RIM & LID			
SIZE	DRAWING NUMBER.	PAGE	REV.
A	A1004EVR-317SS100	1/1	C