

Composite Manholes

A0716 Composite Manholes

The Emco Wheaton A0716 Composite Manhole is designed with lightweight, slip-resistant composite manhole covers, using the latest manufacturing technology to ensure porosity-free molding, and compact, homogeneous distribution of reinforcing fiber. The covers also utilize a UV resistant treatment to protect against sun and weather damage.

Features:

- 1 Meets AASHTO H20 Wheel Loading
 - 2 Non-skid surface
 - 3 Stainless steel cam-lock fittings, field replaceable
 - 4 Stainless steel pry bar cleat
- 39", 42", & 44" Models
- 5 Two stainless steel dual handles - spring-loaded and key-lift
 - 6 Domed top construction to shed water
 - 7 Black painted hot rolled steel skirt
 - 8 Concrete anchors

A0716 Customization Options:

- Black or grey colorway
- Black painted hot rolled steel rim or heavy duty composite rim in black or grey
- Black painted hot rolled steel skirt or rigid black HDPE skirt

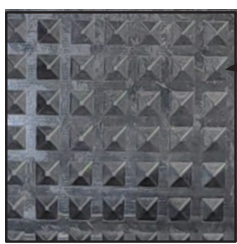
A0716 manholes are constructed with a black painted hot rolled steel rim and skirt and a black composite lid by default.

See page 78 for more details on A0716 customization.

Emco Composite lids have a 36 month warranty!



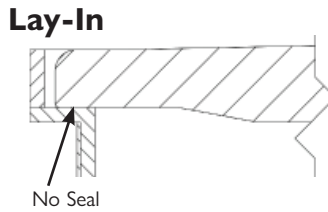
Serial Number

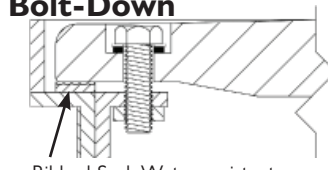


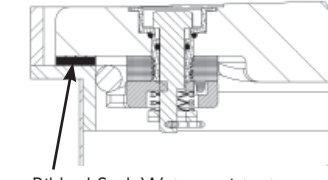
The ManholeTrak Warranty Tracking System is available on our website, www.emcoretail.com or by scanning the QR code above.

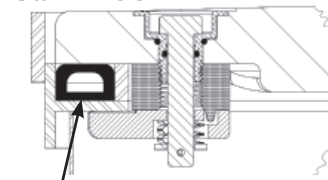
Composite Manholes

A0716 Composite Manholes

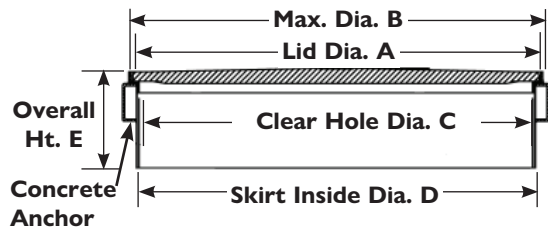
| Seal Options | Model Number | Size | Style | Rim/Lid Color | Lid Dia. "A" | Overall Dia. "B" | Clear Hole I.D. "C" | Skirt I.D. "D" | Overall Ht. "E" |
|--|--------------|-----------------|-----------------|---------------|--------------|------------------|---------------------|----------------|-----------------|
|  <p>No Seal</p> | A0716-018 | 18" | Lay-in | Black | 17.0" | 19.1" | 15.1" | 17.5" | 10.6" |
| | A0716-018LID | 18" | Lid Only Lay-in | Black | 17.0" | -- | -- | -- | -- |
| | A0716-020 | 20" | Lay-in | Black | 20.0" | 20.80" | 18.3" | 18.6" | 9.8" |
| | A0716-020LID | 20" | Lid Only Lay-in | Black | 20.0" | -- | -- | -- | -- |
| | A0716-039 | 39" | Lay-in | Black | 39.5" | 40.3" | 37.8" | 38.3" | 10.3" |
| | A0716-039LID | 39" | Lid Only Lay-in | Black | 39.5" | -- | -- | -- | -- |
| | A0716-042 | 42" | Lay-in | Black | 43.8" | 44.6" | 42.0" | 42.5" | 10.3" |
| | A0716-042LID | 42" | Lid Only Lay-in | Black | 43.8" | -- | -- | -- | -- |
| A0716-044 | 44" | Lay-in | Black | 44.3" | 45.1" | 42.5" | 43.1" | 10.3" | |
| A0716-044LID | 44" | Lid Only Lay-in | Black | 44.3" | -- | -- | -- | -- | |

| Seal Options | Model Number | Size | Style | Rim/Lid Color | Lid Dia. "A" | Overall Dia. "B" | Clear Hole I.D. "C" | Skirt I.D. "D" | Overall Ht. "E" |
|---|--------------|------|--------------------|---------------|--------------|------------------|---------------------|----------------|-----------------|
|  <p>Ribbed Seal, Water-resistant</p> | A0716-039B | 39" | Bolt-down | Black | 39.5" | 40.5" | 34.3" | 38.3" | 10.3" |
| | A0716-039BL | 39" | Lid Only Bolt-down | Black | 39.5" | -- | -- | -- | -- |
| | A0716-042B | 42" | Bolt-down | Black | 43.8" | 44.6" | 38.5" | 42.5" | 10.3" |
| | A0716-042BL | 42" | Lid Only Bolt-down | Black | 43.8" | -- | -- | -- | -- |
| | A0716-044B | 44" | Bolt-down | Black | 44.3" | 45.1" | 40.3" | 43.1" | 10.3" |
| | A0716-044BL | 44" | Lid Only Bolt-down | Black | 44.3" | -- | -- | -- | -- |

| Seal Options | Model Number | Size | Style | Rim/Lid Color | Lid Dia. "A" | Overall Dia. "B" | Clear Hole I.D. "C" | Skirt I.D. "D" | Overall Ht. "E" |
|--|--------------|-------------------|-------------------------|---------------|--------------|------------------|---------------------|----------------|-----------------|
|  <p>Ribbed Seal, Water-resistant</p> | A0716-018C | 18" | Cam Lock | Black | 17.0" | 19.1" | 15.1" | 17.5" | 10.6" |
| | A0716-018CL | 18" | Lid Only Cam Lock | Black | 17.0" | -- | -- | -- | -- |
| | A0716-018CWL | 18" | Lid Only White Cam Lock | Black | 17.0" | -- | -- | -- | -- |
| | A0716-039C | 39" | Cam Lock | Black | 39.5" | 40.5" | 36.8" | 38.3" | 10.3" |
| | A0716-039CL | 39" | Lid Only Cam Lock | Black | 39.5" | -- | -- | -- | -- |
| | A0716-042C | 42" | Cam Lock | Black | 43.8" | 44.6" | 41.0" | 42.5" | 10.3" |
| | A0716-042CL | 42" | Lid Only Cam Lock | Black | 43.8" | -- | -- | -- | -- |
| | A0716-044C | 44" | Cam Lock | Black | 44.3" | 45.1" | 41.5" | 43.1" | 10.3" |
| A0716-044CL | 44" | Lid Only Cam Lock | Black | 44.3" | -- | -- | -- | -- | |

| Seal Options | Model Number | Size | Style | Rim/Lid Color | Lid Dia. "A" | Overall Dia. "B" | Clear Hole I.D. "C" | Skirt I.D. "D" | Overall Ht. "E" |
|--|--------------|------|-------------------|---------------|--------------|------------------|---------------------|----------------|-----------------|
|  <p>D-Seal, Water-tight</p> | A0716-024CD | 24" | Cam Lock w/D-Seal | Black | 24.0" | 29.5" | 22.0" | 25.2" | 11.3" |
| | A0716-039CD | 39" | Cam Lock w/D-Seal | Black | 39.5" | 40.4" | 36.8" | 38.3" | 10.3" |
| | A0716-042CD | 42" | Cam Lock w/D-Seal | Black | 43.8" | 44.6" | 41.0" | 42.5" | 10.3" |
| | A0716-044CD | 44" | Cam Lock w/D-Seal | Black | 44.3" | 45.1" | 41.5" | 43.1" | 10.3" |

*Most common variant
Custom skirt heights available upon request



All composite manholes require a 3/4" socket for installation and maintenance.

Replacement Parts

| Model No. | Description |
|-----------|---|
| 570897 | Rib Seal, -018C |
| 495157 | Rib Seal, -039B, -039C |
| 494988 | Rib Seal, -042B, -042C, -044B, -044C |
| 495561 | D-Seal, -039CD |
| 495562 | D-Seal, -042CD, -044CD |
| 494781K | Cam-Lock Assembly; -039C, -042C, -044C |
| 494781LK | Cam-Lock-D Assembly; -039CD, -042CD, -044CD |

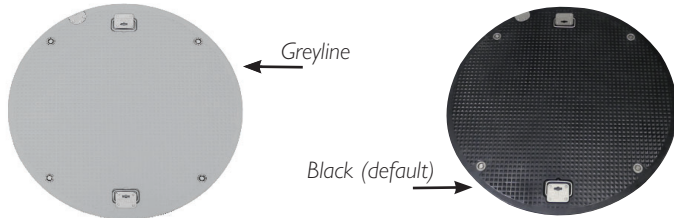
Composite Manholes

A0716 Composite Manhole Customizations

Emco composite manholes are available in an array of different options. Read more about our A0716 customizations below.

Greyline

A0716 manhole lids are available in Black or Grey for all sealing options of the 44" manholes. See page 79 for part numbers.



Typical Summer day

Greyline composite lids are interchangeable with existing Emco black composite lids.

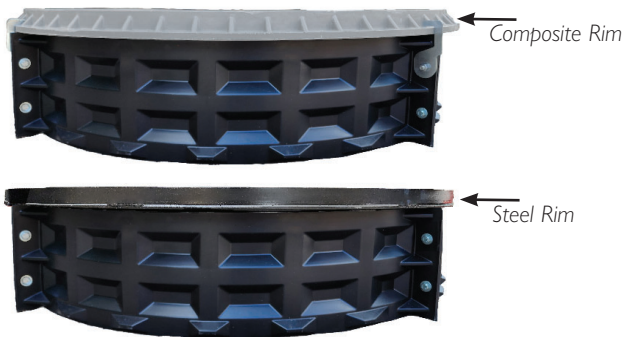
Composite Rim

A0716 manholes are available with a black painted hot rolled steel rim or a lightweight, robust composite rim made from the same material as the A0716 Manhole lid. Composite rims are available in the 44" sizes, black or grey in color, for Lay-in and water resistant Cam-lock styles. Bolt down and water-tight cam-lock are not available with the composite rim. See page 79 for part numbers.



HDPE Skirt

A0716 manholes are available with a black painted hot rolled steel skirt or a rigid, heavy-duty HDPE skirt. HDPE Skirts are available for any 44" A0716 manhole. **Add the suffix "-HDPE" to any applicable A0716 part number to order your manhole with an HDPE skirt.**



TRADITIONAL SHIPPING

4 units
44"x44"x48"

COMPACT SHIPPING

10 units
52"x52"x47"

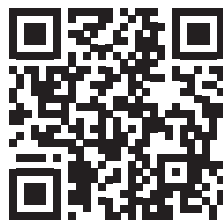
The nesting skirt design allows for compact shipping and lightweight lifting. **Add the suffix "-HDPEB" to the end of any applicable A0716 part number to order your manhole with an HDPE skirt and compact shipping.**

HDPE skirt sections are designed with molded in concrete anchors.

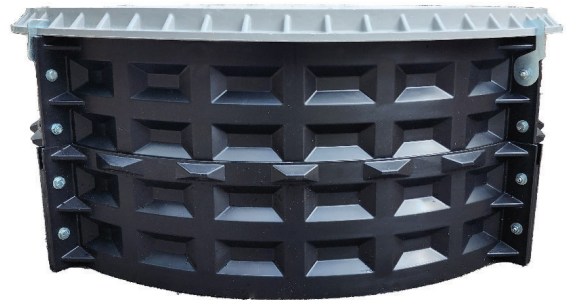
All Emco Composite lids have a 36 month warranty!



Serial Number



The ManholeTrak Warranty Tracking System is available on our website, www.emco-retail.com or by scanning the QR code above.



HDPE skirt sections are stackable to make a double height skirt. Skirt height extensions can be completed in the field with the HDPE skirt extension kit. See page 79 for part numbers.

Composite Manholes

A0716 Composite Manhole Customizations

| Seal Options | Model Number | Size | Style | Rim/Lid Color | Lid Dia. "A" | Overall Dia. "B" | Clear Hole I.D. "C" | Skirt I.D. "D" | Overall Ht. "E" |
|---|--------------|------|-------------------|---------------|--------------|------------------|---------------------|----------------|-----------------|
| Lay-In  No Seal | A0716-044N | 44" | Lay-in | Black | 44.3" | 45.7" | 42.1" | 42.9" | 10.9" |
| | A0716-044NT | 44" | Lay-in Tall Skirt | Black | 44.3" | 45.7" | 42.1" | 42.9" | 18.4" |
| | A0716-044LID | 44" | Lid Only Lay-in | Black | 44.3" | -- | -- | -- | -- |

| Seal Options | Model Number | Size | Style | Rim/Lid Color | Lid Dia. "A" | Overall Dia. "B" | Clear Hole I.D. "C" | Skirt I.D. "D" | Overall Ht. "E" |
|---|--------------|------|---------------------|---------------|--------------|------------------|---------------------|----------------|-----------------|
| Cam-Lock  Seal Water-resistant | A0716-044CN | 44" | Cam-Lock | Black | 44.3" | 45.7" | 42.1" | 42.9" | 10.9" |
| | A0716-044CNT | 44" | Cam-Lock Tall Skirt | Black | 44.3" | 45.7" | 42.1" | 42.9" | 18.4" |
| | A0716-044CL | 44" | Lid Only Cam-Lock | Black | 44.3" | -- | -- | -- | -- |

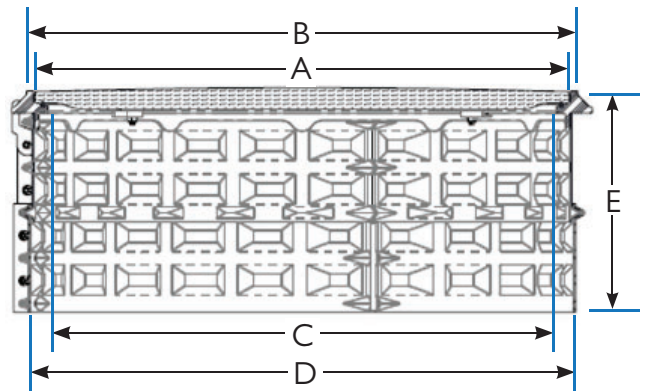
Greyline

| Seal Options | Model Number | Size | Style | Rim/Lid Color | Lid Dia. "A" | Overall Dia. "B" | Clear Hole I.D. "C" | Skirt I.D. "D" | Overall Ht. "E" |
|--|---------------|------|-------------------|---------------|--------------|------------------|---------------------|----------------|-----------------|
| Lay-In  No Seal | A0716-044G | 44" | Lay-in | Grey | 44.3" | 45.7" | 42.1" | 42.9" | 10.9" |
| | A0716-044GT | 44" | Lay-in Tall Skirt | Grey | 44.3" | 45.7" | 42.1" | 42.9" | 18.4" |
| | A0716-044LIDG | 44" | Lid Only Lay-in | Grey | 44.3" | -- | -- | -- | -- |

| Seal Options | Model Number | Size | Style | Rim/Lid Color | Lid Dia. "A" | Overall Dia. "B" | Clear Hole I.D. "C" | Skirt I.D. "D" | Overall Ht. "E" |
|---|--------------|------|---------------------|---------------|--------------|------------------|---------------------|----------------|-----------------|
| Cam-Lock  Seal Water-resistant | A0716-044CG | 44" | Cam-Lock | Grey | 44.3" | 45.7" | 42.1" | 42.9" | 10.9" |
| | A0716-044CGT | 44" | Cam-Lock Tall Skirt | Grey | 44.3" | 45.7" | 42.1" | 42.9" | 18.4" |
| | A0716-044CLG | 44" | Lid Only Cam-Lock | Grey | 44.3" | -- | -- | -- | -- |

Replacement Parts

| Model No. | Description |
|-----------|-------------------------------------|
| 496379 | Composite Rim Seal, Water-Resistant |
| 494781K | Cam-Lock Assembly |
| 496378 | HDPE Skirt Extension Kit |



Shown above is the stacked, double-height skirt.

Composite Manholes

A0716 Composite Manholes

Stainless Steel Assemblies

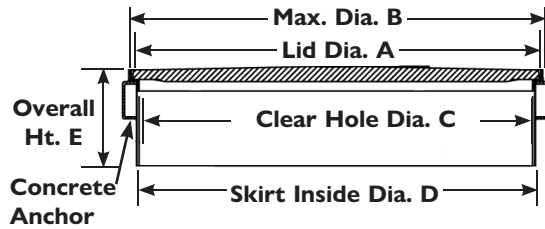
All composite manholes are available with Type 304 stainless steel rim and skirt.

| Model Number | Style | Lid Dia. A | Overall Dia. B | Clear Hole C | Skirt ID D | Overall Ht. E |
|--------------|------------|------------|----------------|--------------|------------|---------------|
| A0716-018SS | 18" Lay-in | 17.0" | 17.6" | 15.6" | 15.9" | 13.0" |
| A0716-039SS | 39" Lay-in | 39.5" | 40.4" | 37.8" | 38.3" | 13.0" |
| A0716-042SS | 42" Lay-in | 43.8" | 44.6" | 42.0" | 42.5" | 13.0" |
| A0716-044SS | 44" Lay-in | 44.3" | 45.1" | 42.5" | 43.1" | 13.0" |

For cam-lock versions, add a "C" to the end of the part number.



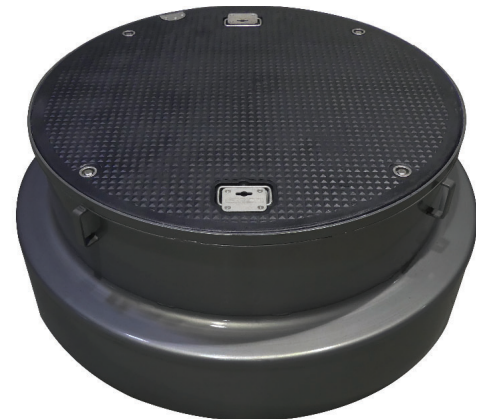
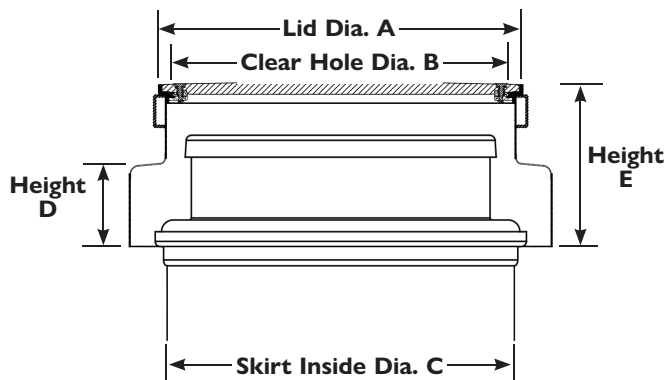
A0716-018SS
18" Lay-in



A0716-039SSC
39" Cam-Lock

Wedding Cake Assemblies

Installs over containment sump



| Model Number | Style | Lid Dim. A | Clear Hole Dim. B | Skirt ID C | Height D | Height E |
|---------------|-----------------------|------------|-------------------|------------|----------|----------|
| A0716-042CW | 42" Cam Lock | 43.75" | 41.57" | 52" | 10.10" | 21.25" |
| A0716-042CDW* | 42" Cam Lock w/D-Seal | 43.75" | 41.38" | 52" | 10.10" | 22.16" |
| A0716-044CW | 44" Cam Lock | 44.25" | 42.25" | 52" | 10.10" | 21.25" |
| A0716-044CDW* | 44" Cam Lock w/D-Seal | 44.25" | 42.06" | 52" | 10.10" | 22.16" |

*Includes water-tight D-Seal

Add "S" suffix for stainless steel rim and skirt

Custom Skirt heights available