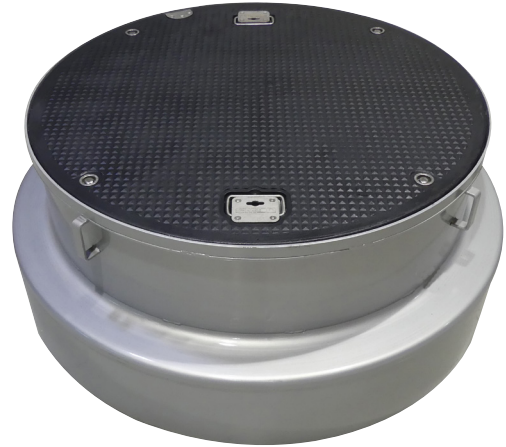
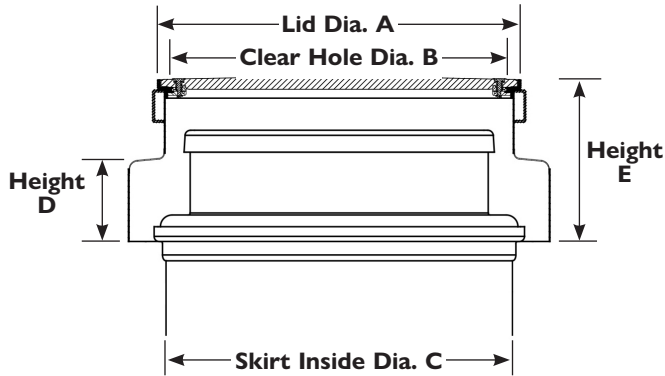


# Composite Manholes

## A0716 Composite Manholes

### Wedding Cake Assemblies

Installs over containment sump



Model Number	Style	Lid Dim. A	Clear Hole Dim. B	Skirt ID C	Height D	Height E
A0716-042CW	42" Cam Lock	43.75"	41.57"	52"	10.10"	21.25"
A0716-042CDW*	42" Cam Lock w/D-Seal	43.75"	41.38"	52"	10.10"	22.16"
A0716-044CW	44" Cam Lock	44.25"	42.25"	52"	10.10"	21.25"
A0716-044CDW*	44" Cam Lock w/D-Seal	44.25"	42.06"	52"	10.10"	22.16"

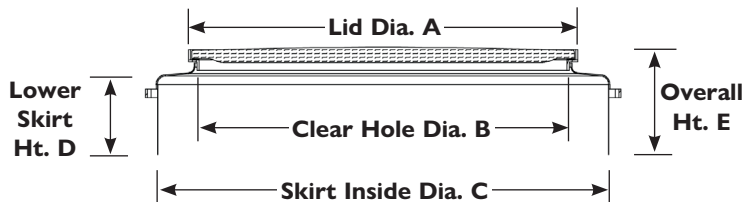
\*Includes water-tight D-Seal

Add "S" suffix for stainless steel rim and skirt

*Emco composite lids have a 36 month warranty. The ManholeTrak Warranty Tracking System is available on our website, [www.emcoretail.com](http://www.emcoretail.com).*

### Short Cake Assemblies

Installs over containment sump



Model Number	Style	Lid Dim. A	Clear Hole Dim. B	Skirt ID C	Height D	Height E
A0716-044AB	44" Lay-in	44.25"	42.56"	52.1"	7.0"	12.0"
A0716-044AC	44" Cam Lock	44.25"	42.25"	52.1"	7.0"	12.0"
A0716-044ACD	44" Cam Lock w/D-Seal	44.25"	42.06"	52.1"	7.0"	12.0"