

# Monitoring Well Manholes

## A0721 Monitoring Well Manholes

All Emco Wheaton Monitoring Well Manholes incorporate cast-in identification triangles in accordance with API recommendations and meet AASHTO H20 wheel loading.

- Painted ductile iron lid and rim
- Optional galvanized steel or polyethylene skirt
- Bolt-down units have water-tight lids
- Custom skirt heights available
- Heavy Duty (16 gauge hot rolled carbon steel) skirts available. 100% welded skirt and seam. To order, replace the first digit of the variant number with a 2.



Built-in side handle on 18" models - one hand opening and positioning



■ City of LA Approval BR800075  
A0721-001ID, A0721-008CEID  
A0721-101ID, A0721-108ID



ID tag available on all models; large enough for all new regulatory requirements. To order, add "ID" to the end of the part number.

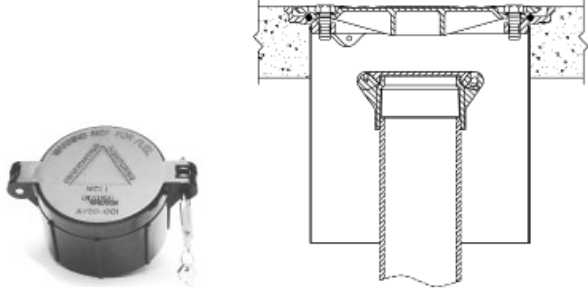
**A0726-050ID** ID Tag Kit  
Includes tags and rivets for 50 units

## A0720 Locking Cap & Collar

The Emco Wheaton A0720 locking cap and collar is used to limit access and seal monitoring wells and can be threaded or solvent welded onto a 4" PVC monitoring well pipe. It displays the monitoring well designation and includes a padlock. The cap and collar are both made of durable ABS plastic.

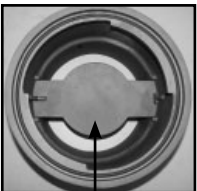
Model No.	Description	Pipe Size	Lbs.
A0720-001	Locking Cap and Collar	4"	1.3

**Replacement Parts**  
564029 Lock/Key Set A0720



## A0721-112 12" Locking Monitoring Well Manhole

- Corrosion-free - all components are hard coat anodized aluminum
- Lockable, for added security
- Heavy-duty, reinforced lid with water-tight seal
- Meets AASHTO H20 wheel loading
- T-handle available, p/n A0081-112
- Weighs 25.7 lbs.



Locking Plate



# Monitoring Well Manholes

## A0721 Monitoring Well Manholes

Size	Model No.	Pallet Qty.	Lid Type	Skirt Style	Overall Color	Clear Height	Max. Hole ID	Dia.	Lbs.
<b>5"</b>	* A0721-105	100	Bolt-down	Steel	Black	8.5"	3.8"	6.0"	5.7
	* A0721-106	125	Bolt-down	Steel	Black	7.5"	4.5"	6.7"	6.3
<b>6"</b>	A0721-106A	100	Bolt-down	Steel	Black	9.5"	4.5"	6.7"	6.4
	* A0721-008	48	Bolt-down	Poly	Black	12.3"	6.0"	9.9"	11.7
<b>8"</b>	A0721-008CE	48	BD, Large Bolts	Poly	White	12.3"	6.0"	9.9"	11.1
	* A0721-108	48	Bolt-down	Steel	Black	12.7"	6.0"	9.9"	13.7
	A0721-108W	48	Bolt-down	Steel	White	12.7"	6.0"	9.9"	13.7
	* A0721-188	64	Bolt-down	Steel	Black	9.2"	6.0"	9.9"	12.8
	* A0721-188L	64	Lay-in	Steel	Black	8.9"	7.8"	9.9"	11.9
	*** A0721-208W****	48	BD, Welded w/Lugs	HD Steel	Black	12.5"	6.0"	9.9"	12.7
	A0721-308	64	BD, 3 Bolts	Steel	White	8.8"	6.4"	9.4"	12.8
	A0721-308A	48	BD, 3 Bolts	Steel	White	12.8"	6.4"	9.4"	13.7
	** A0722-008	48	Bolt-down	Poly	Black	12.3"	6.0"	9.9"	12.4
	* A0721-001	27	Bolt-down	Poly	White	12.0"	9.4"	15.1"	23.0
<b>12"</b>	A0721-001CC	27	BD w/Rebar Tabs	Poly	White	12.0"	9.4"	15.1"	23.1
	A0721-001L	27	Lay-inPoly	Black	12.0"	11.2"	13.8"	22.8	
	* A0721-101	27	Bolt-down	Steel	White	12.0"	9.4"	15.1"	28.8
	A0721-101A	18	Bolt-down	Steel	White	18.0"	9.4"	15.1"	31.0
	A0721-101L	27	Lay-inSteel	Black	12.0"	11.2"	13.8"	28.6	
	A0721-119	18	Bolt-down	Steel	White	19.0"	9.4"	15.1"	36.3
	A0721-128	36	Bolt-down	Poly	White	8.1"	9.4"	15.1"	21.9
	A0721-128A	36	Bolt-down	Steel	White	8.0"	9.4"	15.1"	23.6
	** A0722-001	27	Bolt-down	Poly	White	12.0"	9.4"	15.1"	24.3
	<b>18"</b>	* A0721-018	15	Bolt-down	Steel	Black	12.3"	13.8"	18.4"
A0721-118		10	Bolt-down	Steel	Black	18.0"	13.8"	18.4"	69.5

\* Most common variant  
 \*\* Includes locking cap & collar

\*\*\* Heavy duty  
 \*\*\*\* Compliant with Wisconsin Administrative Code, Groundwater Monitoring Well Requirements, NR141.13, Subsection 4b

### Lid Replacement Parts

Part No.	Lid	Description	Lbs.	Part No.	Lid	Description	Lbs.
569883	5"	Lid Ductile Bolt-down	3.0	566419	8"	O-ring for 3/8" Bolt	
569885	5"	Lid Gasket		566334	8"	O-ring for 5/8" Bolt	
494263	5"	Bolt, 3/8" x 0.5"		568715	8"	Neoprene Washer for 3/8" Bolt	
568692	6"	Lid Ductile Bolt-down	2.4	569723	12"	Lid Ductile Lay-in	11.6
568820	6"	Lid Gasket		563980	12"	Lid Ductile Bolt-down	11.0
568662	6"	Bolt, 5/16" x 0.75"		563593	12"	Lid Gasket	
571700	7"	Lid Ductile Bolt-down	3.3	496257	12"	Bolt & O-ring, 5/8" x 1.25", 15/16" Hex	
571702	7"	Lid Gasket		566334	12"	O-ring for 5/8" Bolt	
494261	7"	Bolt & Neoprene Washer, 3/8" x 1"		567712	18"	Lid Ductile Bolt-down	28.8
569285	8"	Lid Ductile Lay-in	5.1	567995	18"	Lid Gasket	
569106	8"	Lid Ductile Bolt-down	5.1	494262	18"	Bolt & O-ring, 5/8" x 1.75", 15/16" Hex	
567150	8"	Lid Ductile Bolt-down, A0721-008CE	5.1	494375	18"	Bolt & O-ring, 3/8" x 2"	
570767	8"	Lid Ductile Bolt-down, A0721-308 (3 bolt)	5.1	566419	18"	O-ring for 3/8" Bolt	
567146	8"	Lid Gasket		566334	18"	O-ring for 5/8" Bolt	
494260	8"	Bolt & O-ring, 5/8" x 1", 15/16" Hex, A0721-008CE		568715	18"	Neoprene Washer for 3/8" Bolt	
494261	8"	Bolt & Neoprene Washer, 3/8" x 1"					