

# Spill Containment

## Replaceable

## Stainless Steel/Poly

### Evolution

The Evolution Series spill container features a corrosion free stainless steel primary container and is customizable for varied customer preferences.

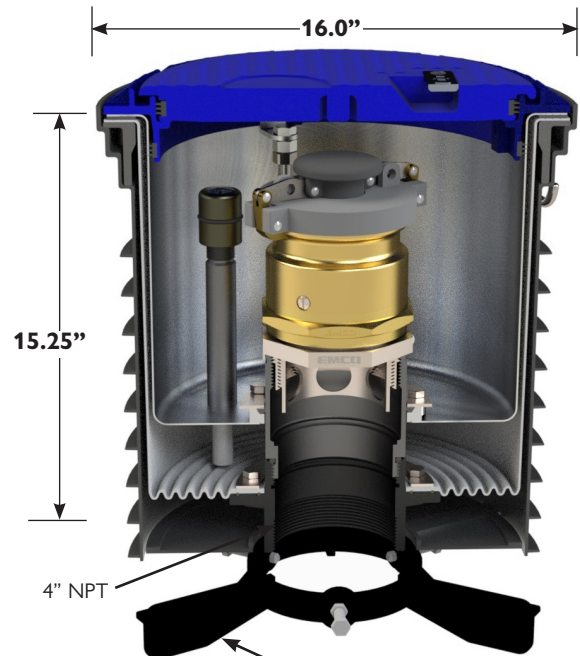
- Rust-proof stainless steel primary containment vessel eliminates failures due to punctures or abuse
- Screw-on style incorporates female stainless fittings to receive EVR riser seal for fill applications or male stainless fittings for vapor applications
- **Never break concrete again** - easily repair or replace primary unit from grade without breaking concrete
- Grade level spill containment, 5 gallon capacity
- Installs on 16" center/center tank bung spacing
- EZ-Gage to monitor interstitial space at a glance

#### Select your desired features:

- Composite lid/stainless rim or cast iron lid/rim - water-resistant with built-in handle, exclusive triple wiper seal and vent valve. Meets AASHTO H20 wheel loading
- Lid and rim available powder coated to API color specifications
- Powder coated or stainless steel fitting
- For fill applications: Available with stainless steel riser seal, fill cap and brass or nickel plated swivel adapter.  
For vapor applications: Available with stainless steel nipple, vapor cap and brass or nickel plated swivel adapter
- Drain

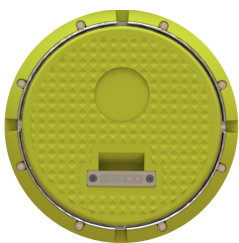
Contact Customer Service at 800-234-4394 for ordering information

### Double Wall Stainless Steel Primary Poly Secondary



Riser lock included to prevent the riser pipe from turning during subsequent removal and installation of the primary liner.

- CARB Phase I EVR Executive Order VR-105  
ULC Listed MH21149  
Florida DEP #EQ-741  
NC DENR  
MO DNR



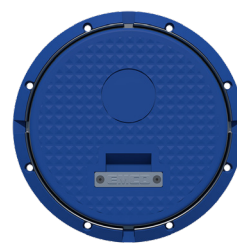
A1004-316LID-D  
Ultra Low Sulfur Diesel  
Yellow



A1004-316LID-R  
Regular  
White



A1004-316LID-V  
Vapor  
Orange



A1004-316LID-DEF  
DEF  
Blue



Protective cover shields rim and lid from concrete slurry

A1004-316LID-U  
Ultra/Premium  
Red

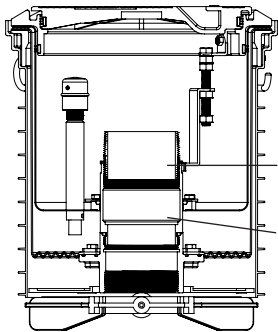
# Spill Containment

## Replaceable

## Stainless Steel/Poly

### Evolution

#### Cast Iron Rim & Lid



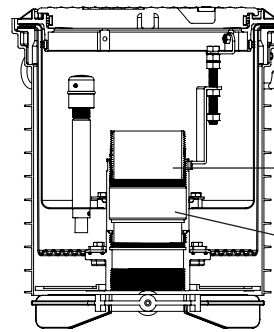
A7901-004CSS  
SST Close Nipple

A7901-305F  
Powder Coated Fitting



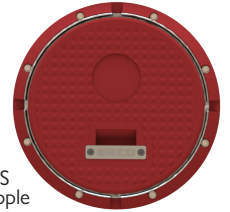
Powder Coated  
Cast Iron Rim & Lid

#### Stainless Steel Rim/Composite Lid



A7901-004CSS  
SST Close Nipple

A7901-305FS  
SST Fitting

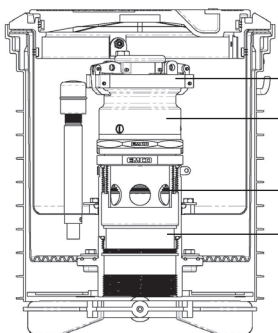


Powder Coated  
Stainless Steel Rim  
Composite Lid

### Basic

| Model No.         | Rim/Lid | A0996 ID Tag |
|-------------------|---------|--------------|
| A1004EVR-317SS100 | Black   | ----         |
| A1004EVR-317SS101 | White   | ----         |
| A1004EVR-317SS102 | Red     | ----         |
| A1004EVR-317SS103 | Yellow  | ----         |
| A1004EVR-317SS104 | Orange  | Vapor        |
| A1004EVR-317SS107 | White   | E0           |

| Model No.         | Rim/Lid    | A0996 ID Tag |
|-------------------|------------|--------------|
| A1004EVR-317SS200 | Not Coated | ----         |
| A1004EVR-317SS201 | White      | ----         |
| A1004EVR-317SS202 | Red        | ----         |
| A1004EVR-317SS203 | Yellow     | ----         |
| A1004EVR-317SS204 | Orange     | Vapor        |
| A1004EVR-317SS206 | Bronze     | E85          |
| A1004EVR-317SS207 | White      | E0           |
| A1004EVR-317SS209 | Blue       | DEF          |

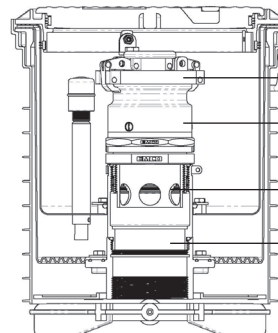


A0097-005 Cap

A0030-124S  
Brass Swivel Adapter

494096 Riser Seal

A7901-305F  
Powder Coated Fitting



A0097-005 Cap

A0030-124S  
Brass Swivel Adapter

494096 Riser Seal

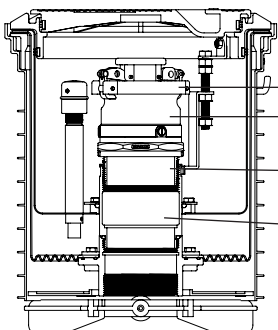
A7901-305FS  
SST Fitting

### Fill Applications

| Model No.         | Rim/Lid | A0996 ID Tag |
|-------------------|---------|--------------|
| A1004EVR-317SS1B0 | Black   | ----         |
| A1004EVR-317SS1B1 | White   | ----         |
| A1004EVR-317SS1B2 | Red     | ----         |
| A1004EVR-317SS1B3 | Yellow  | ----         |
| A1004EVR-317SS1B7 | White   | E0           |

| Model No.          | Rim/Lid    | A0996 ID Tag |
|--------------------|------------|--------------|
| A1004EVR-317SS2B0  | Not Coated | ----         |
| A1004EVR-317SS2B1  | White      | ----         |
| A1004EVR-317SS2B2  | Red        | ----         |
| A1004EVR-317SS2B3  | Yellow     | ----         |
| A1004EVR-317SS2D6* | Bronze     | E85          |
| A1004EVR-317SS2B7  | White      | E0           |

\*Includes nickel plated swivel adapter

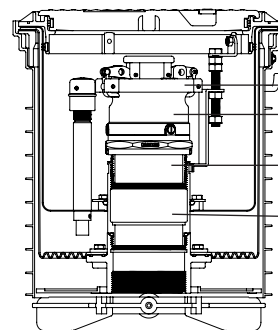


A0099-002 Cap

A0076-124S  
Brass Swivel Adapter

A7901-004CSS  
SST Close Nipple

A7901-305F Powder  
Coated Fitting



A0099-002 Cap

A0076-124S  
Brass Swivel Adapter

A7901-004CSS  
SST Close Nipple

A7901-305FS  
SST Fitting

### Vapor Applications

| Model No.         | Rim/ Lid | A0996 ID Tag |
|-------------------|----------|--------------|
| A1004EVR-317SS140 | Black    | ----         |
| A1004EVR-317SS244 | Orange   | Vapor        |

| Model No.         | Rim/ Lid   | A0996 ID Tag |
|-------------------|------------|--------------|
| A1004EVR-317SS240 | Not Coated | ----         |
| A1004EVR-317SS244 | Orange     | Vapor        |