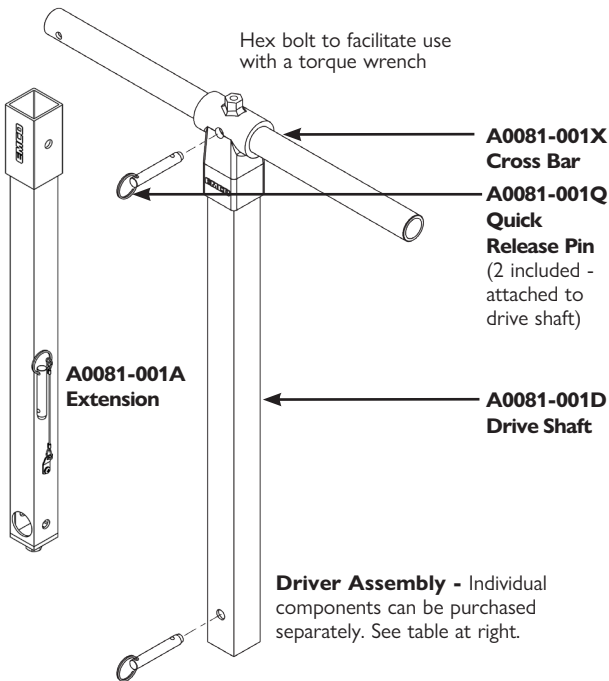


Tools

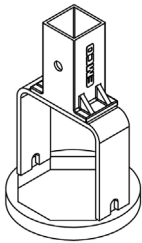
A0081 Wrench



Emco Wheaton A0081Wrenches are specially designed for the installation and repair of Emco Wheaton spill containers and adapters. Wrenches are available as complete units. Components can also be purchased individually. The A0081-001SET is a standard tool kit; components listed on following page. The wrenches are steel construction, powder coated blue.

Model No.	Application	Lbs.
Tool Box Set		
A0081-001SET	Standard Tool Kit	92.3
A0081-001SET-NB	Standard Tool Kit w/o Tool Box	38.8
Complete Wrenches		
A0081-001	Swivel Adapter	16.7
A0081-001H	Spill Container (w/Drain)	11.2
A0081-001L	Lug Adapter	13.1
A0081-001R	Retrofit Spill Container	17.6
A0081-001S	Secondary Flange Removal	20.5
A0081-003	Pipe Nipple Extractor	14.3
A0081-003M	Spill Container (w/o Drain)	23.5
A0081-009	Chain Wrench Adapter	13.8
Individual Components		
A0081-001B	Swivel Adapter Bit	5.6
A0081-001HB	Spill Container (w/Drain) Bit	5.2
A0081-001LB	Lug Adapter Bit	2.0
A0081-001RB	Retrofit Spill Container Bit	6.5
A0081-001SB	Secondary Flange Removal Bit	7.5
A0081-003B	Pipe Nipple Extractor Bit	3.1
* A0081-003MB	Spill Container (w/o Drain) Bit	12.0
A0081-009B	Chain Wrench Adapter Bit	2.7
A0081-001A	Drive Shaft Extension	6.3
A0081-001D	Drive Shaft	7.0
A0081-001X	Cross Bar	4.2
A0081-001Q	Quick Release Pin	0.1
A0081-001TB	Tool Box (empty)	53.5

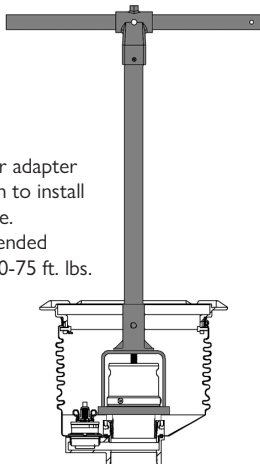
* Must have an A0081-001A to function.



A0081-001B

A0081-001 Swivel Adapter Wrench

Use to install and remove fill and vapor adapters with octagonal bases, and the 494096 Riser Seal. Fits all competitor fill and vapor adapters.



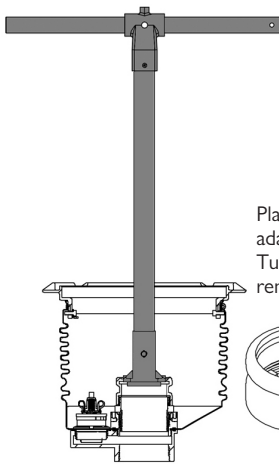
Place over adapter base. Turn to install or remove. Recommended torque: 60-75 ft. lbs.



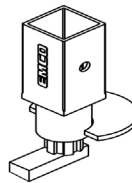
A0081-001LB

A0081-001L Lug Adapter Wrench

Use to install and remove fill adapters with lugs. Use to adjust the center insert of the 494096 Riser Seal. Replaces the 494120 Riser Seal Wrench. Fits OPW 3" and 4" adapters.



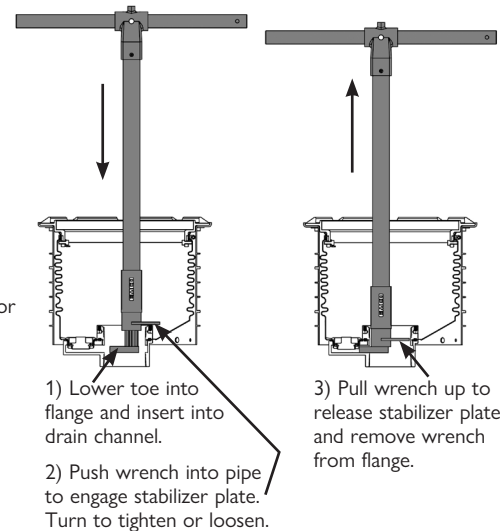
Place over adapter lugs. Turn to install or remove.



A0081-001HB

A0081-001H Spill Container (w/Drain) Wrench

Use for installation and removal of spill containers.



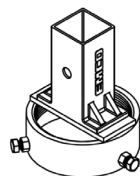
A0081 Wrench



A0081-001SET Standard Tool Kit

- A0081-001A Drive Shaft Extension
- A0081-001D Drive Shaft
- A0081-001X Cross Bar
- A0081-001B Swivel Adapter Bit
- A0081-001HB Spill Container Bit
- A0081-001LB Lug Adapter Bit
- A0081-001SB Secondary Flange Removal Bit
- A0081-003B Pipe Nipple Extractor Bit
- A0081-003MB Spill Container (w/o Drain) Bit
- A0081-009B Chain Wrench Adapter Bit
- A0081-001TB Tool Box

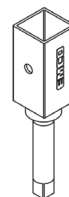
Box - 44"x15"x12"; Overall - 48"x16"x12"



A0081-003B

A0081-003
Pipe Nipple Extractor

Use to remove and install 4" pipe nipples.



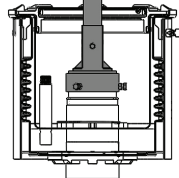
A0081-009B

A0081-009
Chain Wrench Adapter

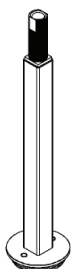
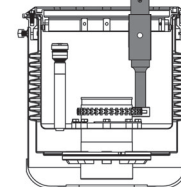
Use with a chain wrench to tighten or loosen fittings, valves, risers and nipples.



Tighten bolts
around pipe nipple,
then rotate to
extract.



Attach to A0081-001D
Drive Shaft to tighten
or loosen fittings, valves,
risers and nipples.



A0081-003MB

* Must have an A0081-001A
to function.

A0081-003M
Spill Container (w/o Drain) Wrench

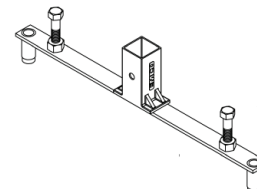
Use for installation and removal of spill containers without drains.



A0081-001SB

A0081-001S
Secondary Flange Removal Wrench

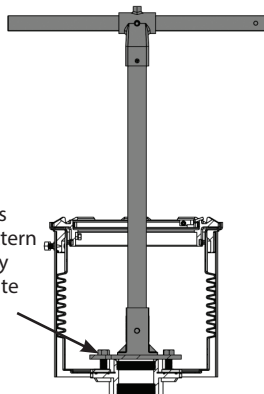
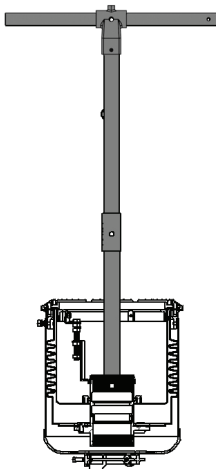
Use to remove secondary containment assemblies.



A0081-001RB

A0081-001R
Retrofit Lid Wrench

Required for installation of A1005-516R/-518R
Retrofit Spill Containment (OPW 500/700
retrofit). Not included in standard tool kit.



Tighten bolts
into hole pattern
on secondary
flange - rotate
to remove.

