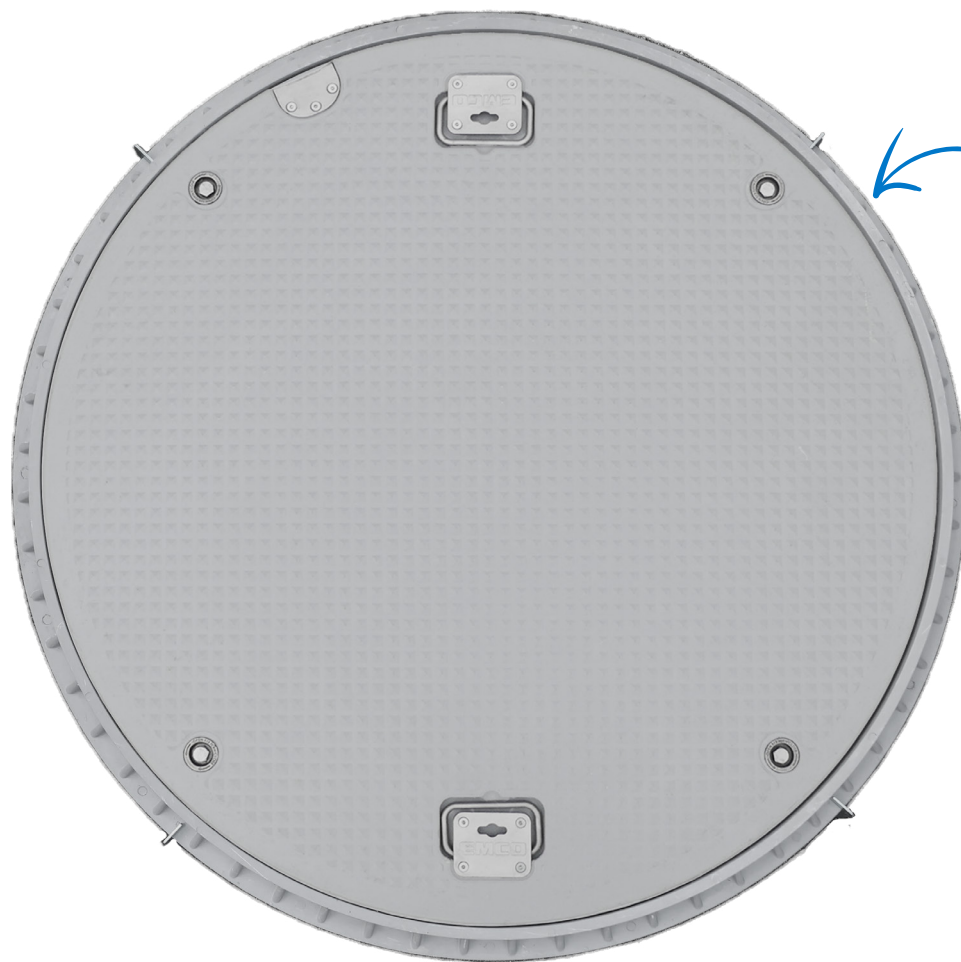


EMCO®

A0716
COMPOSITE MANHOLES
GREYLINE



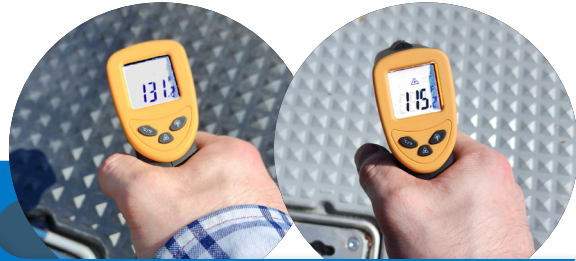
Composite
Lid & Rim



Super Rigid
Poly Skirt

A0716 COMPOSITE MANHOLE GREYLINE

Typical Summer Day



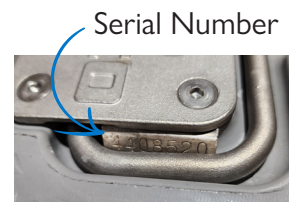
The new grey color variant reflects more sunlight keeping lids cooler and easier to handle.

The new Greyline composite lids are interchangeable with existing Emco black composite lids.

The nesting skirt design allows for compact shipping, lightweight lifting, and field upgradeable heights.

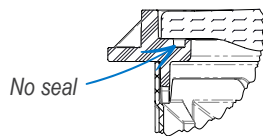
The Emco Wheaton A0716 Composite Manhole is designed with lightweight, slip-resistant composite manhole covers, using the latest manufacturing technology to ensure porosity-free molding, and compact, homogeneous distribution of reinforcing fiber.

- Meets AASHTO H20 Wheel Loading
- Non-skid surface
- Stainless steel cam-lock fittings; field replaceable
- Stainless steel pry bar cleat
- Lightweight, heavy-duty composite grey rim color matched to manhole covers
- Domed top construction to shed water
- Two stainless steel dual handles: spring-loaded and key-lift
- Cam-lock option features a water-resistant D-seal captured on all three sides to prevent lifting.



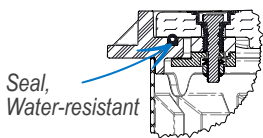
36 month warranty. Tracking available on emcoretail.com.

Lay-In



Model No.	Style	Lid Dia. "A"	Overall Dia. "B"	Clear Hole I.D. "C"	Skirt I.D. "D"	Overall Ht. "E"
A0716-044G	44" Lay-in Grey	44.3"	45.7"	42.1"	42.9"	10.9"
A0716-044GT	44" Lay-in Grey Tall Skirt	44.3"	45.7"	42.1"	42.9"	18.4"
A0716-044LIDG	44" Lid Only Lay-in Grey	44.3"	-	-	-	-

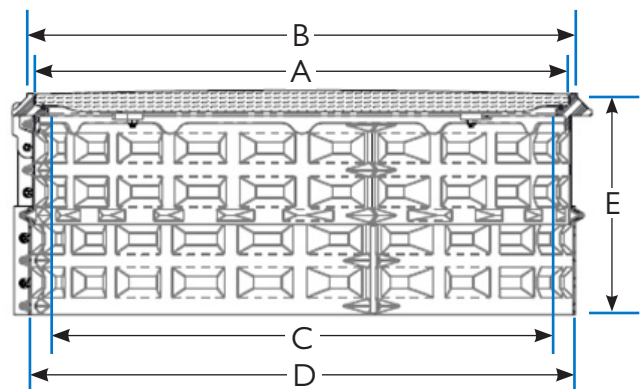
Cam-Lock



Model No.	Style	Lid Dia. "A"	Overall Dia. "B"	Clear Hole I.D. "C"	Skirt I.D. "D"	Overall Ht. "E"
A0716-044CG	44" Cam-Lock Grey	44.3"	45.7"	42.1"	42.9"	10.9"
A0716-044CGT	44" Cam-Lock Grey Tall Skirt	44.3"	45.7"	42.1"	42.9"	18.4"
A0716-044CLG	44" Lid Only Cam-Lock Grey	44.3"	-	-	-	-

Replacement Parts

496379	Composite Rim Seal, Water-Resistant
494781K	Cam-Lock Assembly
496378	HDPE Skirt Extension Kit



Poly sections are stackable to make a double height skirt.