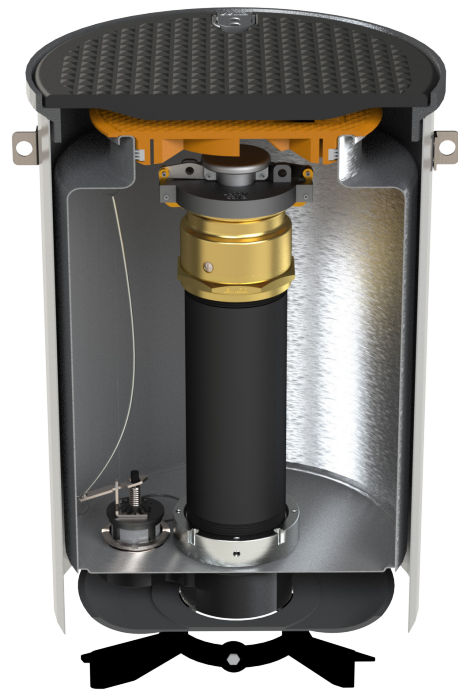




A1005 Below Grade Stainless Steel Spill Containment

The Milk Can Solution



ULC Listed
MH21149

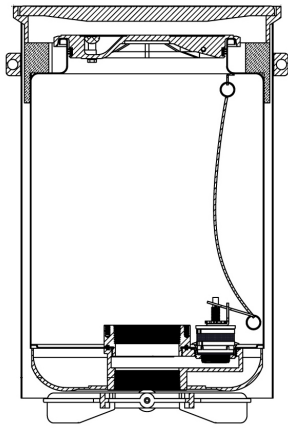
**One-piece, Rust-free
Stainless Steel Construction**

EMCO WHEATON RETAIL CORPORATION

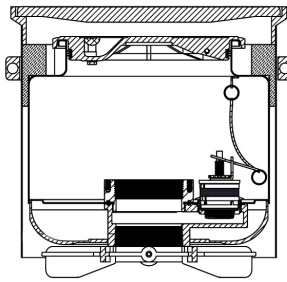
2300 Industrial Park Drive • Wilson, North Carolina 27893
252-243-0150 • 252-243-4603 (fax) • www.emcoretail.com



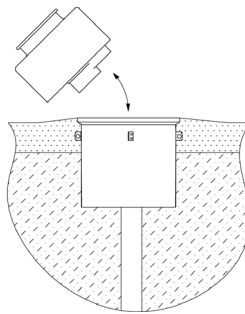
A1005 Below Grade Stainless Steel Spill Containment



A1005-915D
18" Manhole Included



A1005-905D
18" Manhole Included



Replaceable from above ground



Below Grade Lid

- Cast iron
- Built-in handle
- Water-resistant
- Pressure relief valve
- Exclusive triple wiper seal
- Optional locking mechanism

Available with drain or drain plug - models with drain include a Phase I EVR approved pull/push drain assembly

Model No.	Description	Overall Dim.	Lid Dia.	Installed Ht.	Lbs.
A1005-905	Below Grade, SW, SST, 18" Lay-in Composite Manhole, Drain Plug, 5 gal	17.87"	17.00"	14.70"	78.8
A1005-905D	Below Grade, SW, SST, 18" Lay-in Composite Manhole, Drain, 5 gal	17.87"	17.00"	14.70"	79.0
A1005-915	Below Grade, SW, SST, 18" Lay-in Composite Manhole, Drain Plug, 15 gal	17.87"	17.00"	24.77"	97.8
A1005-915D	Below Grade, SW, SST, 18" Lay-in Composite Manhole, Drain, 15 gal	17.87"	17.00"	24.77"	98.0

Available with cap and adapter; add an X for fill and V for vapor, to the end of the variant number.

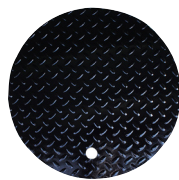
Grade Level



Composite (Standard)



Cast Iron (Optional)



Diamond Plate w/ Finger Hole (Optional)

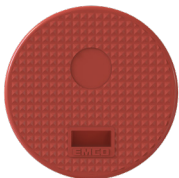
Below Grade



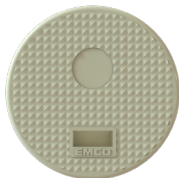
Available with locking mechanism



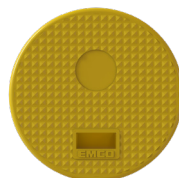
API Product Color Coding



Red, Ultra - U



White, Regular - R



Yellow, Ultra Low Sulfur Diesel - D



Bronze, E85 - E



Orange, Vapor - V

To order with a colored lid, add a hyphen and the respective letter to the end of the variant number. i.e. A1005-905-U