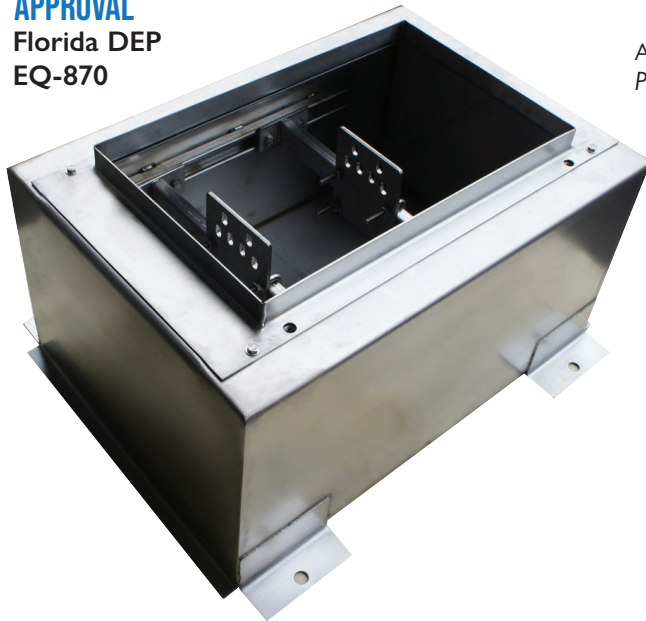


## Above Ground Stainless Steel Dispenser Sump

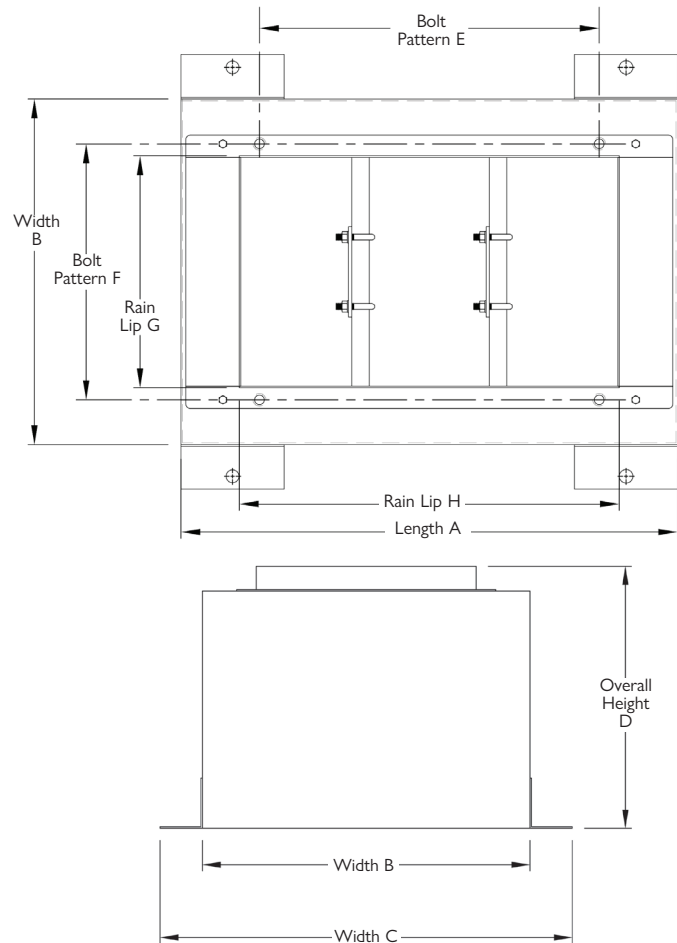
### APPROVAL

Florida DEP  
EQ-870



A0718-734ATLSX-2

Piping penetration and conduit by others



The all 316 Stainless Steel construction can withstand even the harshest of marine environments

### A0060 SHEAR VALVE

Emco offers stainless steel shear valves for both 1.5" + 2" connections, perfect for this application. Visit our website or call customer service for more info.



PART NUMBER	DESCRIPTION	STABILIZER BAR*	SUMP BASE				BOLT PATTERNS		RAIN LIP	
			A	B	C	D	E	F	G	H
A0718-734ATLSX-1	Gasboy Atlas X	1	34.00"	22.00"	27.25"	17.38"	22.81"	16.67"	14.67"	26.00"
A0718-734ATLSX-2	Gasboy Atlas X	2	34.00"	22.00"	27.25"	17.38"	22.81"	16.67"	14.67"	26.00"
A0718-729CMDR-1	PMC Commander	1	28.88"	20.13"	25.30"	15.12"	19.75"	14.88"	13.50"	22.06"
A0718-729CMDR-2	PMC Commander	2	28.88"	20.13"	25.30"	15.12"	19.75"	14.88"	13.50"	22.06"
A0718-FH515	PMC Fuelhouse	1	30.00"	31.00"	36.25"	16.60"	26.50"	28.00"	25.50"	23.06"

\* Each stabilizer bar comes with 1 bracket and 1 mounting plate

For additional drawing variants, contact Customer Service at [800-234-4394](tel:800-234-4394)