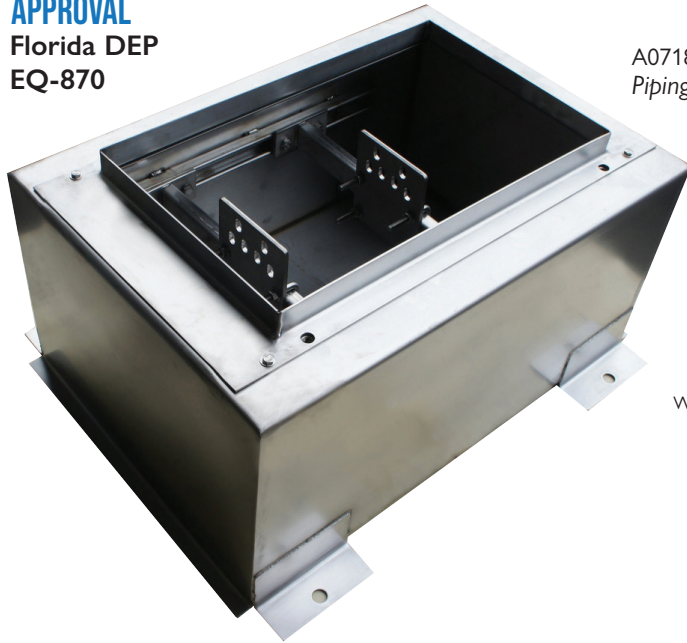
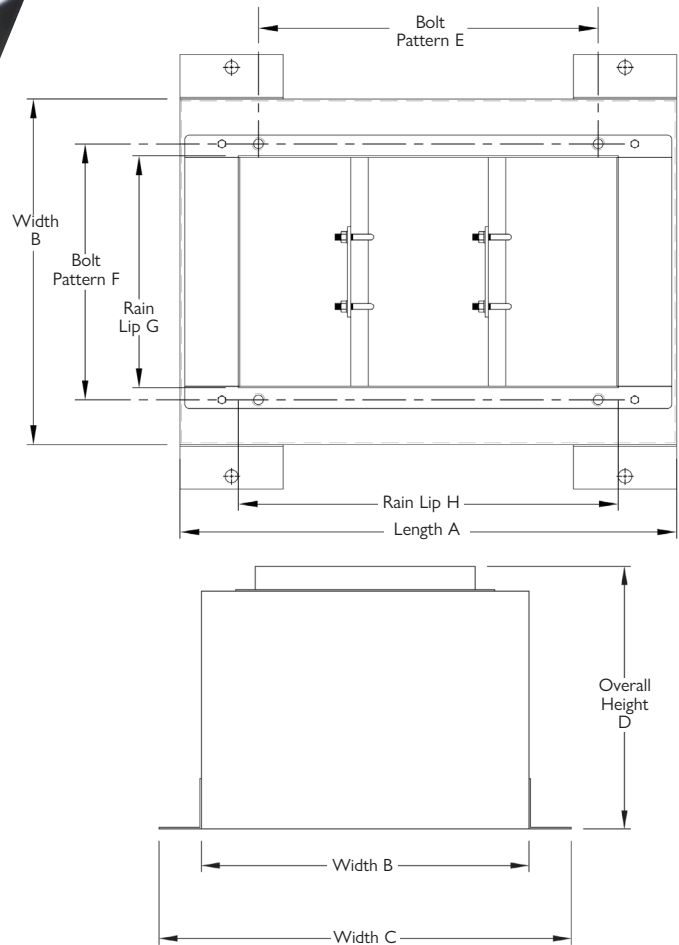


Above Ground Stainless Steel Dispenser Sump for the Gasboy Atlas X

APPROVAL
Florida DEP
EQ-870



A0718-734ATLSX-2
Piping penetration and conduit by others



The all 316 Stainless Steel construction can withstand even the harshest of marine environments

A0060 SHEAR VALVE

Emco offers stainless steel shear valves for both 1.5" + 2" connections, perfect for this application. Visit our website or call our customer service for more info.



PART NUMBER	DESCRIPTION	STABILIZER BAR*	SUMP BASE				BOLT PATTERNS		RAIN LIP	
			A	B	C	D	E	F	G	H
A0718-734ATLSX-1	Gasboy Atlas X	1	34.00"	22.00"	27.25"	17.38"	22.81"	16.67"	14.67"	26.00"
A0718-734ATLSX-2	Gasboy Atlas X	2	34.00"	22.00"	27.25"	17.38"	22.81"	16.67"	14.67"	26.00"

* Each stabilizer bar comes with 1 bracket and 1 mounting plate

For additional drawing variants, contact Customer Service at [800-234-4394](tel:800-234-4394)