

A0721 Monitoring Well Manholes	2-3	A0717 Standard Manholes, Round	8-9
A0717 Square Manholes & Vaults	4-6	A0716 Composite Manholes	10-13
A0727/A0728 Well Protectors	7		

## EMCO WHEATON RETAIL CORPORATION

2300 Industrial Park Dr. • Wilson, NC 27893 • 252-243-0150 • 252-243-4603 (fax) • [www.emcoretail.com](http://www.emcoretail.com)

# Monitoring Well Manholes

## A0721 Monitoring Well Manholes

All Emco Wheaton Monitoring Well Manholes incorporate cast-in identification triangles in accordance with API recommendations and meet AASHTO H20 wheel loading.

- Painted ductile iron lid and rim
- Optional galvanized steel or polyethylene skirt
- Bolt-down units have water-tight lids
- Custom skirt heights available
- Heavy Duty (16 gauge hot rolled carbon steel) skirts available. 100% welded skirt and seam. To order, replace the first digit of the variant number with a 2.



■ City of LA Approval BR800075  
A0721-001ID, A0721-008CEID  
A0721-101ID, A0721-108ID



Built-in side handle on 18" models - one hand opening and positioning



ID tag available on all models; large enough for all new regulatory requirements. To order, add "ID" to the end of the part number.

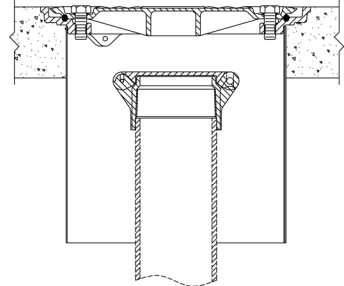
**A0726-050ID** ID Tag Kit  
Includes tags and rivets for 50 units

## A0720 Locking Cap & Collar

The Emco Wheaton A0720 locking cap and collar is used to limit access and seal monitoring wells and can be threaded or solvent welded onto a 4" PVC monitoring well pipe. It displays the monitoring well designation and includes a padlock. The cap and collar are both made of durable ABS plastic.

Model No.	Description	Pipe Size	Lbs.
A0720-001	Locking Cap and Collar, With Lock/Key	4"	1.3
A0720-001NL	Locking Cap and Collar, Without Lock/Key	4"	1.0

**Replacement Parts**  
564029 Lock/Key Set A0720



# Monitoring Well Manholes

## A0721 Monitoring Well Manholes

Size	Model No.	Pallet Qty.	Lid Type	Skirt Style	Color	Overall Height	Clear Hole ID	Max. Dia.	Lbs.
5"	* A0721-105	100	Bolt-down	Galv. Steel	Black	8.5"	3.8"	6.0"	5.7
6"	* A0721-106	125	Bolt-down	Galv. Steel	Black	7.5"	4.5"	6.7"	6.3
	A0721-106A	100	Bolt-down	Galv. Steel	Black	9.5"	4.5"	6.7"	6.4
8"	* A0721-008	48	Bolt-down	Poly	Black	12.3"	6.0"	9.9"	11.7
	A0721-008CE	48	BD, Large Bolts	Poly	White	12.3"	6.0"	9.9"	11.1
	* A0721-108	48	Bolt-down	Galv. Steel	Black	12.0"	6.0"	9.9"	13.7
	A0721-108W	48	Bolt-down	Galv. Steel	White	12.0"	6.0"	9.9"	13.7
	* A0721-188	64	Bolt-down	Galv. Steel	Black	8.0"	6.0"	9.9"	12.8
	* A0721-188L	64	Lay-in	Galv. Steel	Black	8.0"	7.8"	9.9"	11.9
	*** A0721-208W****	48	BD, Welded w/Lugs	HD Steel	White	12.5"	6.0"	9.9"	12.7
	A0721-308	64	BD, 3 Bolts	Galv. Steel	White	7.7"	6.4"	9.4"	12.8
	A0721-308A	48	BD, 3 Bolts	Galv. Steel	White	11.7"	6.4"	9.4"	13.7
	** A0722-008	48	Bolt-down	Poly	Black	12.3"	6.0"	9.9"	12.4
12"	* A0721-001	27	Bolt-down	Poly	White	12.0"	9.4"	15.1"	23.0
	A0721-001CC	27	BD w/Rebar Tabs	Poly	White	12.0"	9.4"	15.1"	23.1
	A0721-001L	27	Lay-in	Poly	Black	12.0"	11.2"	13.8"	22.8
	* A0721-101	27	Bolt-down	Galv. Steel	White	12.0"	9.4"	15.1"	28.8
	A0721-101A	18	Bolt-down	Galv. Steel	White	18.0"	9.4"	15.1"	31.0
	A0721-101L	27	Lay-in	Steel	Black	12.0"	11.2"	13.8"	28.6
	A0721-119	18	Bolt-down	Galv. Steel	White	19.0"	9.4"	15.1"	36.3
	A0721-128	36	Bolt-down	Poly	White	8.1"	9.4"	15.1"	21.9
	A0721-128A	36	Bolt-down	Galv. Steel	White	8.0"	9.4"	15.1"	23.6
	** A0722-001	27	Bolt-down	Poly	White	12.0"	9.4"	15.1"	24.3
18"	* A0721-018	15	Bolt-down	Steel	Black	12.3"	13.8"	18.4"	58.5
	A0721-118	10	Bolt-down	Steel	Black	18.0"	13.8"	18.4"	69.5

\* Most common variant  
 \*\* Includes locking cap & collar

\*\*\* Heavy duty  
 \*\*\*\* Compliant with Wisconsin Administrative Code, Groundwater Monitoring Well Requirements, NR141.13, Subsection 4b

### Lid Replacement Parts

Part No.	Lid	Description	Lbs.	Part No.	Lid	Description	Lbs.
569883	5"	Lid Ductile Bolt-down	3.0	566419	8"	O-ring for 3/8" Bolt	
569885	5"	Lid Gasket		566334	8"	O-ring for 5/8" Bolt	
494263	5"	Bolt, 3/8" x 0.5"		568715	8"	Neoprene Washer for 3/8" Bolt	
568692	6"	Lid Ductile Bolt-down	2.4	569723	12"	Lid Ductile Lay-in	11.6
568820	6"	Lid Gasket		563980	12"	Lid Ductile Bolt-down	11.0
568662	6"	Bolt, 5/16" x 0.75"		563593	12"	Lid Gasket	
571700	7"	Lid Ductile Bolt-down	3.3	496257	12"	Bolt & O-ring, 5/8" x 1.25", 15/16" Hex	
571702	7"	Lid Gasket		566334	12"	O-ring for 5/8" Bolt	
494261	7"	Bolt & Neoprene Washer, 3/8" x 1"		567712	18"	Lid Ductile Bolt-down	28.8
569285	8"	Lid Ductile Lay-in	5.1	567995	18"	Lid Gasket	
569106	8"	Lid Ductile Bolt-down	5.1	494262	18"	Bolt & O-ring, 5/8" x 1.75", 15/16" Hex	
567150	8"	Lid Ductile Bolt-down, A0721-008CE	5.1	494375	18"	Bolt & O-ring, 3/8" x 2"	
570767	8"	Lid Ductile Bolt-down, A0721-308 (3 bolt)	5.1	566419	18"	O-ring for 3/8" Bolt	
567146	8"	Lid Gasket		566334	18"	O-ring for 5/8" Bolt	
494260	8"	Bolt & O-ring, 5/8" x 1", 15/16" Hex, A0721-008CE		568715	18"	Neoprene Washer for 3/8" Bolt	
494261	8"	Bolt & Neoprene Washer, 3/8" x 1"					



# Standard Manholes

## A0717 Square Manholes and Vaults

Size	Model No.	Style	Overall Height	Lid Lbs.	Total Lbs.
<b>12"</b>	*A0717-712VW	Locking Vault Water-resistant	11.6"	18	38.1
	A0717-712VWA	Locking Vault Water-resistant	24.6"	18	46.3
	A0717-712VWB	Locking Vault Water-resistant	18.6"	18	42.5
<b>18"</b>	A0717-718	Lay-in	9.6"	36	56.3
	*A0717-718ABW	Bolt-down Water-resistant	18.6"	36	73.3
	A0717-718BWA	Bolt-down Water-resistant	24.6"	36	87.3
	*A0717-718VW	Locking Vault Water-resistant	18.6"	36	76.8
	A0717-718VWA	Locking Vault Water-resistant	24.6"	36	96.0
	A0717-718VWL	Locking Vault Lift Assist Water-resistant	18.6"	36	77.3
<b>24"</b>	A0717-724	Lay-in	9.6"	65	88.4
	A0717-724A	Lay-in	24.6"	65	112.0
	A0717-724ABW	Bolt-down Water-resistant	24.6"	65	119.8
	A0717-724BBW	Bolt-down Water-resistant w/Handle	24.6"	65	122.2
	A0717-724BW	Bolt-down Water-resistant w/Handle	9.6"	65	107.2
	A0717-724E	Lay-in w/Handle	12.6"	65	117.0
	A0717-724V	Locking Vault	24.6"	65	116.5
	*A0717-724VW	Locking Vault Water-resistant	24.6"	65	121.5
	A0717-724VWB	Locking Vault Water-resistant	10.6"	65	116.5
	A0717-724VWC	Vault Bolt-down Water-resistant w/Handle	24.6"	65	126.4
	A0717-724VWE	Locking Vault Water-resistant	18.6"	65	117.0
	*A0717-724VWL	Locking Vault Lift Assist Water-resistant	24.6"	68	120.9
<b>30"</b>	A0717-730VW	Locking Vault Water-resistant	24.6"	123	200.0
	A0717-730VWL	Locking Vault Lift Assist Water-resistant	24.6"	123	200.0
<b>36"</b>	A0717-736VW	Locking Vault Water-resistant	36.6"	165	307.4
	A0717-736VWA	Locking Vault Water-resistant 36x24x24	24.6"	165	265.0
	A0717-736VWAL	Locking Vault Lift Assist WR 36x24x24	24.6"	165	270.0
	A0717-736VWL	Locking Vault Lift Assist Water-resistant	36.6"	171	287.0
	A0717-736VWLA	Locking Vault Lift Assist Water-resistant	24.6"	171	268.5
<b>48"</b>	A0717-748VWL	Locking Vault Lift Assist Water-resistant	48.6"	165	550.0
	A0717-748VWLA	Locking Vault Lift Assist Water-resistant	24.6"	165	470.0
	A0717-748VWLF	Locking Vault Lift Assist WR 24x24x48	24.6"	171	320.0

\*Most common variant

Custom sizes available upon request

V = Hinged; B = Bolt-down; W = Water-resistant; L = Lift Assist Lid

495320 Standard Spring Assembly Kit for 24" Vaults

495779 24" Safety Latch Assembly for 24" Vaults

## A0717 Round Vaults

Size	Model No.	Style	Overall Height	Lid Lbs.	Total Lbs.
<b>18"</b>	A0717-818VWA	Round Vault, Bolt-down	9.6"	27.4	45.1
	A0717-818VW	Round Vault, Bolt-down	18.6"	27.4	50.4
	A0717-818VWD	Round Vault, Bolt-down	24.6"	27.4	55.7
<b>24"</b>	A0717-824VWA	Round Vault, Bolt-down	18.6"	52.36	95.1
	A0717-824VW	Round Vault, Bolt-down	24.6"	52.36	102.7



# Standard Manholes

## A0717 Custom Manholes and Vaults

Emco will custom build manholes and vaults to your specifications. Contact our customer service department at 800-234-4394 or sales@emcoretail.com.



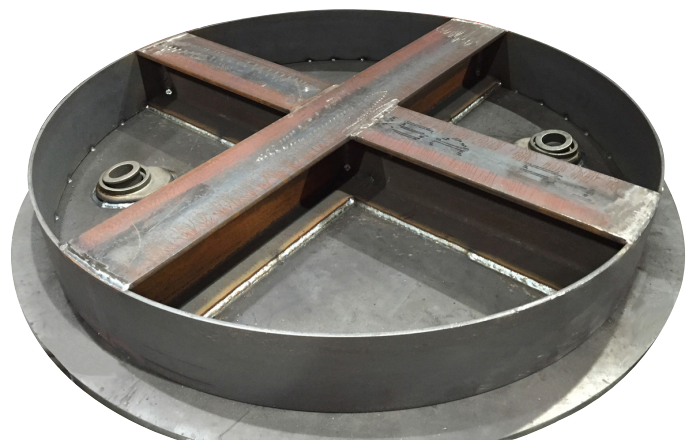
**A0717-748VWLCSS**  
Hydrant Box, Lift Assist  
48"x22"x14"  
Stainless Steel



**A0717-772VWLD**  
Locking Vault, Lift Assist  
72"x72"x48"  
Bolt-Down Water Resistant



**A0717-042ABHD**  
Heavy Duty Manhole  
42"x10"  
1/2" Steel Lid  
**100,000 lb. Load Rating**

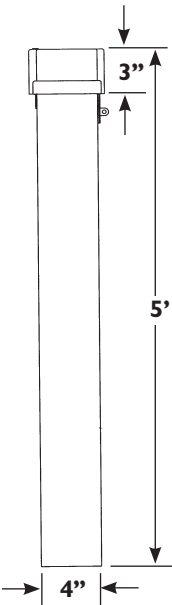


# Well Protectors

## A0727 Square Well Protectors

### Available in 4", 6", & 8" Sizes

- Raintight Cap - one piece die cast aluminum cap is powdered coated for corrosion resistance and painted with contrasting black triangle
- Riveted Construction - cap overlaps hinge pins, preventing vandalism
- Lockable
- Top Kit - complete cap assembly for bare tubing
- Optimized height - clears tallest well plug



Model No.	Description	Material	Lbs.
A0727-004A	4"x4"x5' Square Well Protector	Aluminum	12.0
A0727-004S	4"x4"x5' Square Well Protector	Steel	23.0
A0727-006A	6"x6"x5' Square Well Protector	Aluminum	21.8
A0727-008A	8"x8"x5' Square Well Protector	Aluminum	34.0
A0727-008AA	8"x8"x5' Square Well Protector	Anodized Aluminum	34.0

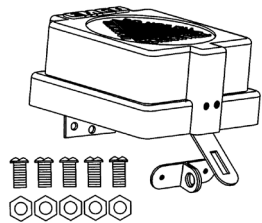
Custom lengths available upon request

Stainless Steel Hinges  
Open 150°



### Replacement Top Kits

Model No.	Description	Material	Lbs.
A0727-004K	Top Kit for Bare Tubing	Aluminum	1.60
A0727-006K	Top Kit for Bare Tubing	Aluminum	1.93
A0727-008K	Top Kit for Bare Tubing	Aluminum	2.97



# Standard Manholes

## A0717 Round Manholes

The Emco Wheaton A0717 multi-purpose manhole provides access to all types of underground storage or containment vessels and meets AASHTO H20 wheel loading.

- Open throat design for easy access
- Optional galvanized steel or polyethylene skirt (8" & 12")
- Bolt-down units have water-resistant lids
- Cam-lock units with D-Seal have water-tight lids
- Built-in handle (18")
- Custom skirt heights available on all models

### 24" - 48" Models

- Diamond plate steel lid
- Hot rolled steel skirt
- Concrete anchors
- T-bar frame
- Recessed handle
- Available in lay-in, bolt-down and cam-lock versions



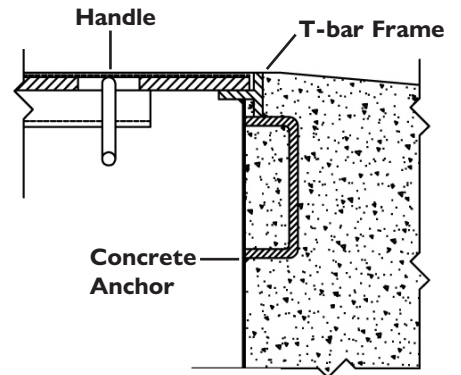
A0717-036B



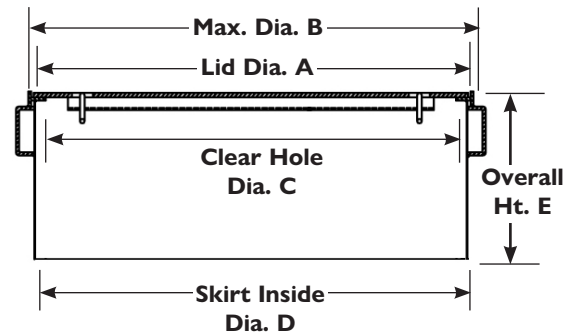
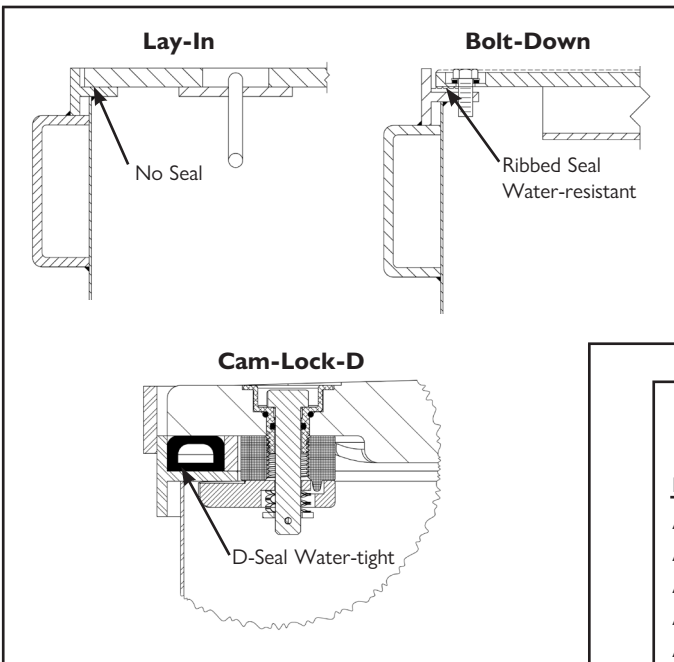
A0717-018B

A0717-188

A0717-022B



### Seal Options (24" - 48" Models)



### 3/8" Steel Drop-In Replacement Lids For Competitors' Manholes

Emco	OPW	Franklin	Flexing	Morrison
A0717-039LID	E00618	781-448-06		
A0717-039M				318L-3812ACC
A0717-042LID			14U-4210C	
A0717-044LID	E00626	781-445-06		
A0717-044M				318L-4412ACC



# Standard Manholes

## A0717 Round Manholes

	Model Number	Pallet Qty.	Style	Skirt	Lid	Lid Dia. A	Max. Dia. B	Clear Hole Dia. C	Skirt I.D. D	Overall Ht. E	Lbs.
<b>8"</b>	A0717-008	48	Lay-in	Poly	Cast Iron	9.0"	9.9"	8.0"	8.1"	12.0"	10.6
	A0717-108	64	Lay-in	Galv. Steel	Cast Iron	9.0"	9.9"	8.0"	8.4"	10.0"	12.6
<b>12"</b>	* <b>A0717-022</b>	27	Lay-in	Poly	Cast Iron	12.4"	13.8"	11.3"	12.0"	12.0"	18.0
	A0717-022B	27	Bolt-down	Poly	Cast Iron	12.4"	13.8"	9.4"	12.0"	12.0"	23.0
	* <b>A0717-122</b>	27	Lay-in	Galv. Steel	Cast Iron	12.4"	13.8"	11.6"	12.0"	10.0"	25.3
	A0717-122B	27	Bolt-down	Galv. Steel	Cast Iron	12.4"	13.8"	9.4"	12.0"	10.0"	28.8
	A0717-122FG	27	Lay-in, w/finger hole	Galv. Steel	Cast Iron	12.4"	13.8"	11.6"	12.0"	10.0"	26.0
	567177		Lid Only		Cast Iron	12.4"					10.0
<b>18"</b>	* <b>A0717-018</b>	15	Lay-in	Galv. Steel	Cast Iron	17.0"	17.8"	16.0"	17.0"	10.0"	51.0
	A0717-018A	10	Lay-in	Galv. Steel	Cast Iron	17.0"	17.8"	16.0"	17.0"	18.0"	58.1
	A0717-018B	15	Bolt-down	Galv. Steel	Cast Iron	17.0"	17.8"	14.1"	17.0"	10.0"	56.3
	567715X		Lid Only Lay-in**		Cast Iron	17.3"					26.5
	570893L		Lid Only Lay-in***		Cast Iron	17.0"					22.9
	570893B		Lid Only Bolt-down		Cast Iron	17.0"					
<b>24"</b>	A0717-024		Lay-in	Steel	3/8" Steel	23.6"	24.5"	21.4"	23.0"	10.0"	88.0
	A0717-024A		Lay-in	Steel	3/8" Steel	23.6"	24.5"	21.4"	23.0"	18.0"	98.0
	A0717-024CD		Cam Lock w/D-Seal	Steel	3/8" Steel	23.6"	24.5"	21.6"	23.0"	10.0"	90.0
	A0717-024CDA		Cam Lock w/D-Seal	Steel	3/8" Steel	23.6"	24.5"	21.6"	23.0"	19.0"	101.0
	A0717-124		Bolt-down	Steel	3/8" Steel	23.6"	24.5"	21.4"	23.0"	10.0"	90.0
	A0717-124B		Bolt-down	Steel	3/8" Steel	23.6"	24.5"	21.4"	23.0"	19.0"	100.0
	A0717-030		Lay-in	Steel	3/8" Steel	29.6"	30.5"	27.5"	28.5"	10.0"	125.0
<b>30"</b>	A0717-030B		Bolt-down	Steel	3/8" Steel	29.6"	30.5"	27.5"	28.5"	13.0"	127.0
	A0717-030CD		Cam Lock w/D-Seal	Steel	3/8" Steel	29.6"	30.5"	27.5"	28.5"	13.0"	128.0
	A0717-036		Lay-in	Steel	1/2" Steel	35.6"	36.3"	33.6"	35.0"	10.0"	206.0
<b>36"</b>	A0717-036B		Bolt-down	Steel	1/2" Steel	35.6"	36.3"	33.6"	35.0"	13.0"	208.0
	* <b>A0717-136</b>		Lay-in	Steel	3/8" Steel	35.6"	36.3"	33.6"	35.0"	10.0"	189.0
	A0717-136B		Bolt-down	Steel	3/8" Steel	35.6"	36.3"	33.6"	35.0"	13.0"	191.0
<b>37"</b>	A0717-037CD		Cam Lock w/D-Seal	Steel	3/8" Steel	37.0"	37.9"	35.0"	35.0"	13.0"	203.0
	A0717-037CDA		Cam Lock w/D-Seal	Steel	3/8" Steel	37.0"	37.9"	35.0"	35.0"	19.0"	218.0
<b>38"</b>	A0717-038		Lay-in	Steel	1/2" Steel	39.6"	40.5"	37.6"	39.0"	10.0"	270.0
	A0717-038B		Bolt-down	Steel	1/2" Steel	39.6"	40.5"	37.6"	39.0"	13.0"	272.0
	* <b>A0717-038C</b>		Lay-in	Steel	3/8" Steel	39.6"	40.5"	37.6"	39.0"	10.0"	225.0
	A0717-038CB		Bolt-down	Steel	3/8" Steel	39.6"	40.5"	37.6"	39.0"	13.0"	227.0
<b>42"</b>	A0717-042A		Lay-in	Steel	1/2" Steel	44.1"	45.0"	42.1"	43.5"	10.0"	324.0
	A0717-042AB		Lay-in	Steel	1/2" Steel	44.1"	45.0"	42.1"	43.5"	19.0"	341.5
	A0717-042B		Bolt-down	Steel	1/2" Steel	44.1"	45.0"	42.1"	43.5"	13.0"	326.0
	A0717-042CD		Cam Lock w/D-Seal	Steel	3/8" Steel	44.1"	45.0"	42.1"	43.5"	13.0"	327.0
	A0717-042CDA		Cam Lock w/D-Seal	Steel	3/8" Steel	44.1"	45.0"	42.1"	43.5"	18.0"	344.5
	A0717-042D		Lay-in	Steel	3/8" Steel	44.1"	45.0"	42.1"	43.5"	10.0"	268.5
<b>48"</b>	A0717-048		Lay-in	Steel	1/2" Steel	47.1"	48.0"	45.1"	46.5"	10.0"	362.0
	A0717-048CD		Cam Lock w/D-Seal	Steel	3/8" Steel	47.1"	48.0"	45.1"	46.5"	13.0"	365.0
	A0717-148		Lay-in	Steel	3/8" Steel	47.1"	48.0"	45.1"	46.5"	10.0"	301.0

\*Most common variant

\*\*Old Style

\*\*\*>05/14

# Composite Manholes

## A0716 Composite Manholes

The Emco Wheaton A0716 Composite Manhole is designed with lightweight, slip-resistant composite manhole covers, using the latest manufacturing technology to ensure porosity-free molding, and compact, homogeneous distribution of reinforcing fiber. The covers also utilize a UV resistant treatment to protect against sun and weather damage.

**Features:**

- 1 Meets AASHTO H20 Wheel Loading
  - 2 Non-skid surface
  - 3 Stainless steel cam-lock fittings, field replaceable
  - 4 Stainless steel pry bar cleat
- 39", 42", & 44" Models
- 5 Two stainless steel dual handles - spring-loaded and key-lift
  - 6 Domed top construction to shed water
  - 7 Black painted hot rolled steel skirt
  - 8 Concrete anchors

**A0716 Customization Options:**

- Black or grey colorway
- Black painted hot rolled steel rim or heavy duty composite rim in black or grey
- Black painted hot rolled steel skirt or rigid black HDPE skirt

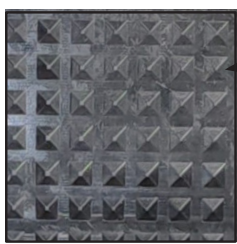
A0716 manholes are constructed with a black painted hot rolled steel rim and skirt and a black composite lid by default.

**See page 12 for more details on A0716 customization.**

**Emco Composite lids have a 36 month warranty!**



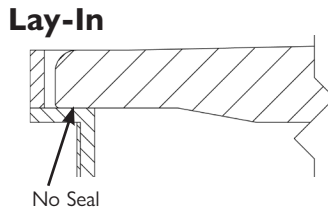
Serial Number

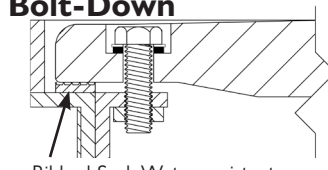


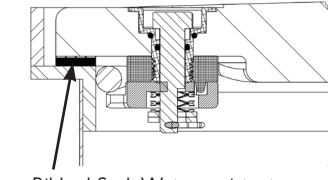
The ManholeTrak Warranty Tracking System is available on our website, [www.emcoretail.com](http://www.emcoretail.com) or by scanning the QR code above.

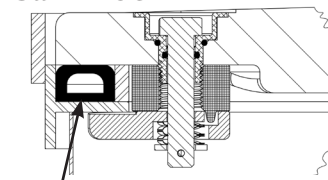
# Composite Manholes

## A0716 Composite Manholes

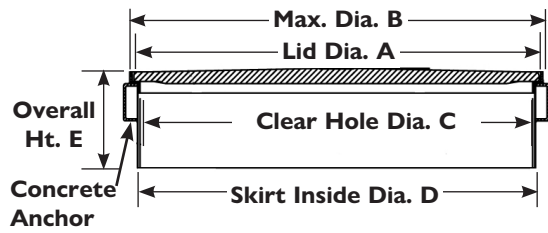
Seal Options	Model Number	Size	Style	Rim/Lid Color	Lid Dia. "A"	Overall Dia. "B"	Clear Hole I.D. "C"	Skirt I.D. "D"	Overall Ht. "E"
 <p>No Seal</p>	A0716-018	18"	Lay-in	Black	17.0"	19.1"	15.1"	17.5"	10.6"
	A0716-018LID	18"	Lid Only Lay-in	Black	17.0"	--	--	--	--
	A0716-020	20"	Lay-in	Black	20.0"	20.8"	18.3"	18.6"	9.8"
	A0716-020LID	20"	Lid Only Lay-in	Black	20.0"	--	--	--	--
	A0716-039	39"	Lay-in	Black	39.5"	40.3"	37.8"	38.3"	10.3"
	A0716-039LID	39"	Lid Only Lay-in	Black	39.5"	--	--	--	--
	A0716-042	42"	Lay-in	Black	43.8"	44.6"	42.0"	42.5"	10.3"
	A0716-042LID	42"	Lid Only Lay-in	Black	43.8"	--	--	--	--
A0716-044	44"	Lay-in	Black	44.3"	44.9"	42.4"	42.9"	10.3"	
A0716-044LID	44"	Lid Only Lay-in	Black	44.3"	--	--	--	--	

Seal Options	Model Number	Size	Style	Rim/Lid Color	Lid Dia. "A"	Overall Dia. "B"	Clear Hole I.D. "C"	Skirt I.D. "D"	Overall Ht. "E"
 <p>Ribbed Seal, Water-resistant</p>	A0716-039B	39"	Bolt-down	Black	39.5"	40.3"	34.7"	38.3"	10.3"
	A0716-039BL	39"	Lid Only Bolt-down	Black	39.5"	--	--	--	--
	A0716-042B	42"	Bolt-down	Black	43.8"	44.6"	39.0"	42.5"	10.3"
	A0716-042BL	42"	Lid Only Bolt-down	Black	43.8"	--	--	--	--
	A0716-044B	44"	Bolt-down	Black	44.3"	44.9"	39.4"	42.9"	10.3"
	A0716-044BL	44"	Lid Only Bolt-down	Black	44.3"	--	--	--	--

Seal Options	Model Number	Size	Style	Rim/Lid Color	Lid Dia. "A"	Overall Dia. "B"	Clear Hole I.D. "C"	Skirt I.D. "D"	Overall Ht. "E"
 <p>Ribbed Seal, Water-resistant</p>	A0716-018C	18"	Cam Lock	Black	17.0"	19.1"	15.1"	17.5"	10.6"
	A0716-018CL	18"	Lid Only Cam Lock	Black	17.0"	--	--	--	--
	A0716-018CWL	18"	Lid Only White Cam Lock	Black	17.0"	--	--	--	--
	A0716-039C	39"	Cam Lock	Black	39.5"	40.3"	36.9"	38.3"	10.3"
	A0716-039CL	39"	Lid Only Cam Lock	Black	39.5"	--	--	--	--
	A0716-042C	42"	Cam Lock	Black	43.8"	44.6"	41.0"	42.5"	10.3"
	A0716-042CL	42"	Lid Only Cam Lock	Black	43.8"	--	--	--	--
	A0716-044C	44"	Cam Lock	Black	44.3"	44.9"	41.9"	42.9"	10.3"
A0716-044CL	44"	Lid Only Cam Lock	Black	44.3"	--	--	--	--	

Seal Options	Model Number	Size	Style	Rim/Lid Color	Lid Dia. "A"	Overall Dia. "B"	Clear Hole I.D. "C"	Skirt I.D. "D"	Overall Ht. "E"
 <p>D-Seal, Water-tight</p>	A0716-024CD	24"	Cam Lock w/D-Seal	Black	24.0"	29.5"	22.0"	25.2"	10.0"
	A0716-039CD	39"	Cam Lock w/D-Seal	Black	39.5"	40.4"	36.8"	38.3"	11.1"
	A0716-042CD	42"	Cam Lock w/D-Seal	Black	43.8"	44.6"	41.0"	42.5"	11.1"
	A0716-044CD	44"	Cam Lock w/D-Seal	Black	44.3"	44.9"	41.8"	43.7"	11.1"

\*Most common variant  
Custom skirt heights available upon request



All composite manholes require a 3/4" socket for installation and maintenance.

Model No.	Description
570897	Rib Seal, -018C
495157	Rib Seal, -039B, -039C
494988	Rib Seal, -042B, -042C, -044B, -044C
495561	D-Seal, -039CD
495562	D-Seal, -042CD, -044CD
494781K	Cam-Lock Assembly; -039C, -042C, -044C
494781LK	Cam-Lock-D Assembly; -039CD, -042CD, -044CD

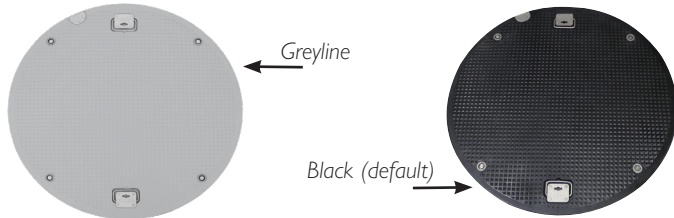
# Composite Manholes

## A0716 Composite Manhole Customizations

Emco composite manholes are available in an array of different options. Read more about our A0716 customizations below.

### Greyline

A0716 manhole lids are available in Black or Grey for all sealing options of the 44" manholes. See page 13 for part numbers.



Typical Summer day

Greyline composite lids are interchangeable with existing Emco black composite lids.

### Composite Rim

A0716 manholes are available with a black painted hot rolled steel rim or a lightweight, robust composite rim made from the same material as the A0716 Manhole lid. Composite rims are available in the 44" sizes, black or grey in color, for Lay-in and water resistant Cam-lock styles. Bolt down and water-tight cam-lock are not available with the composite rim. See page 13 for part numbers.



### HDPE Skirt

A0716 manholes are available with a black painted hot rolled steel skirt or a rigid, heavy-duty HDPE skirt. HDPE Skirts are available for any 44" A0716 manhole. **Add the suffix "-HDPE" to any applicable A0716 part number to order your manhole with an HDPE skirt.**



**TRADITIONAL SHIPPING**

4 units  
44"x44"x48"

**COMPACT SHIPPING**

10 units  
52"x52"x47"

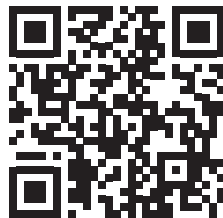
The nesting skirt design allows for compact shipping and lightweight lifting. **Add the suffix "-HDPEB" to the end of any applicable A0716 part number to order your manhole with an HDPE skirt and compact shipping.**

HDPE skirt sections are designed with molded in concrete anchors.

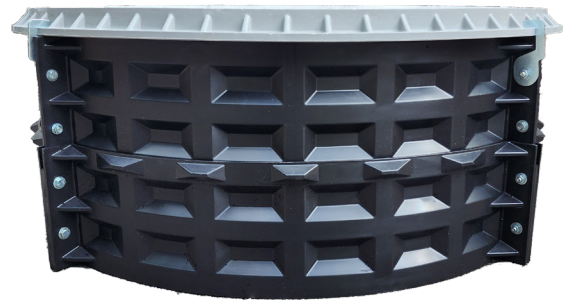
### All Emco Composite lids have a 36 month warranty!



Serial Number



The ManholeTrak Warranty Tracking System is available on our website, [www.emco-retail.com](http://www.emco-retail.com) or by scanning the QR code above.



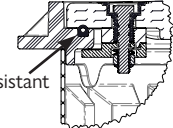
HDPE skirt sections are stackable to make a double height skirt. Skirt height extensions can be completed in the field with the HDPE skirt extension kit. See page 13 for part numbers.



# Composite Manholes

## A0716 Composite Manhole Customizations

Seal Options	Model Number	Size	Style	Rim/Lid Color	Lid Dia. "A"	Overall Dia. "B"	Clear Hole I.D. "C"	Skirt I.D. "D"	Overall Ht. "E"
<b>Lay-In</b>  No Seal	A0716-044N	44"	Lay-in	Black	44.3"	45.7"	42.1"	42.9"	10.9"
	A0716-044NT	44"	Lay-in Tall Skirt	Black	44.3"	45.7"	42.1"	42.9"	18.4"
	A0716-044LID	44"	Lid Only Lay-in	Black	44.3"	--	--	--	--

Seal Options	Model Number	Size	Style	Rim/Lid Color	Lid Dia. "A"	Overall Dia. "B"	Clear Hole I.D. "C"	Skirt I.D. "D"	Overall Ht. "E"
<b>Cam-Lock</b>  Seal Water-resistant	A0716-044CN	44"	Cam-Lock	Black	44.3"	45.7"	42.1"	42.9"	10.9"
	A0716-044CNT	44"	Cam-Lock Tall Skirt	Black	44.3"	45.7"	42.1"	42.9"	18.4"
	A0716-044CL	44"	Lid Only Cam-Lock	Black	44.3"	--	--	--	--

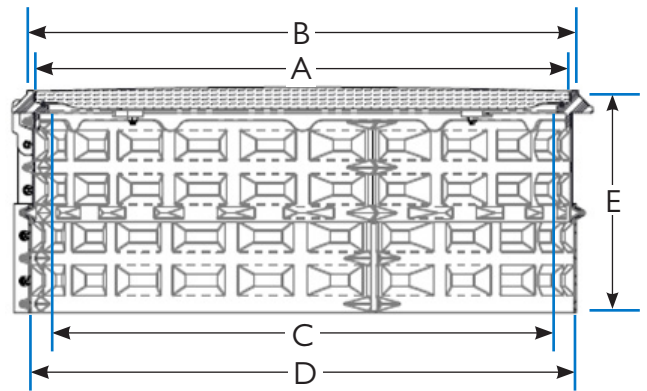
### Greyline

Seal Options	Model Number	Size	Style	Rim/Lid Color	Lid Dia. "A"	Overall Dia. "B"	Clear Hole I.D. "C"	Skirt I.D. "D"	Overall Ht. "E"
<b>Lay-In</b>  No Seal	A0716-044G	44"	Lay-in	Grey	44.3"	45.7"	42.1"	42.9"	10.9"
	A0716-044GT	44"	Lay-in Tall Skirt	Grey	44.3"	45.7"	42.1"	42.9"	18.4"
	A0716-044LIDG	44"	Lid Only Lay-in	Grey	44.3"	--	--	--	--

Seal Options	Model Number	Size	Style	Rim/Lid Color	Lid Dia. "A"	Overall Dia. "B"	Clear Hole I.D. "C"	Skirt I.D. "D"	Overall Ht. "E"
<b>Cam-Lock</b>  Seal Water-resistant	A0716-044CG	44"	Cam-Lock	Grey	44.3"	45.7"	42.1"	42.9"	10.9"
	A0716-044CGT	44"	Cam-Lock Tall Skirt	Grey	44.3"	45.7"	42.1"	42.9"	18.4"
	A0716-044CLG	44"	Lid Only Cam-Lock	Grey	44.3"	--	--	--	--

### Replacement Parts

Model No.	Description
496379	Composite Rim Seal, Water-Resistant
494781K	Cam-Lock Assembly
496378	HDPE Skirt Extension Kit



Shown above is the stacked, double-height skirt.

