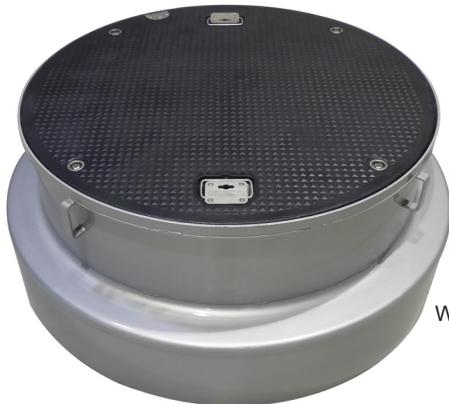




# A0716

## Wedding Cake Assembly Short Cake Assembly



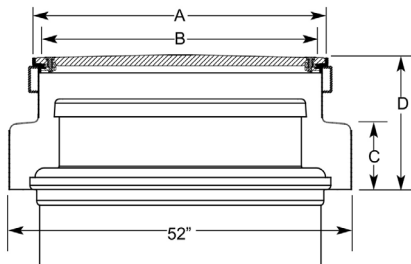
Wedding Cake



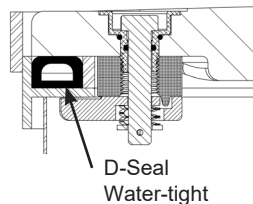
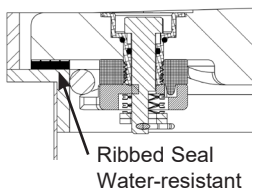
Short Cake

**Installs over Xerxes Containment Sump or Containment Solutions Fiberglass Turbine Enclosure**

- Lightweight, non-skid composite lid
- Stainless steel fittings and pry bar cleat
- Two stainless steel dual handles - spring-loaded and key-lift
- 16 gauge steel skirt; also available with stainless steel rim and skirt
- Cam-lock fittings - cast to show open and close directional arrows; field replaceable
- Powder coated cast steel cam with o-ring
- Concret anchors
- Meets AASHTO H20 wheel loading
- 36 month warranty on composite lids; ManholeTrak warranty tracking system available on our website, [www.emcoretail.com](http://www.emcoretail.com)



### Seal Options



Model Number	Style	Lid Dim. A	Clear Hole Dim. B	Height C	Height D
<b>Wedding Cake</b>					
A0716-042CW	42" Cam-lock	43.75"	41.57"	10.10"	21.25"
A0716-042CDW	42" Cam-lock, D-Seal	43.75"	41.38"	10.10"	22.16"
A0716-044CW	44" Cam-lock	44.25"	42.25"	10.10"	21.25"
A0716-044CDW	44" Cam-lock, D-Seal	44.25"	42.06"	10.10"	22.16"
Add "S" suffix for all stainless steel construction					
<b>Short Cake</b>					
A0716-044AB	44" Lay-in	44.25"	42.56"	7.0"	12.0"
A0716-044AC	44" Cam-lock	44.25"	42.25"	7.0"	12.0"
A0716-044ACD	44" Cam-lock, D-Seal	44.25"	42.06"	7.0"	12.0"

### EMCO WHEATON RETAIL CORPORATION

2300 Industrial Park Drive • Wilson, North Carolina 27893 252-243-0150 • 252-243-4603 (fax) • [www.emcoretail.com](http://www.emcoretail.com)