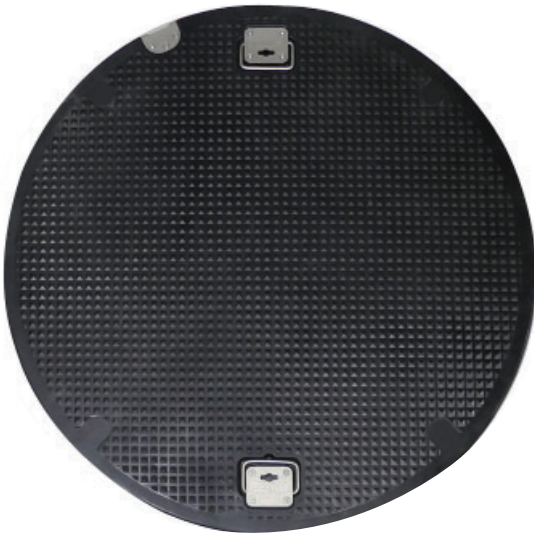
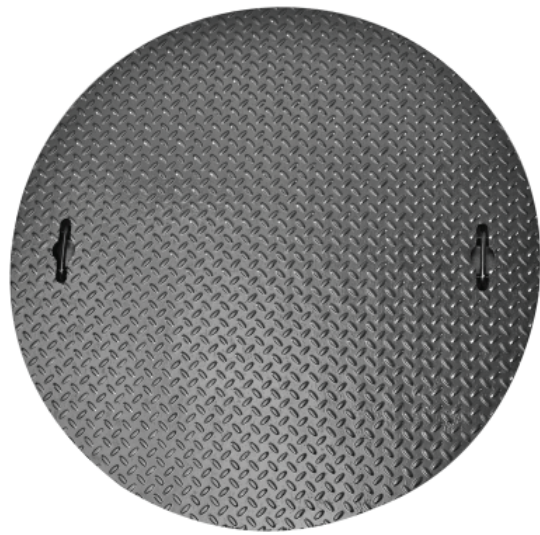


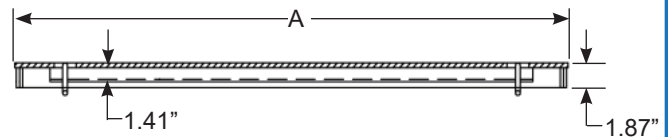
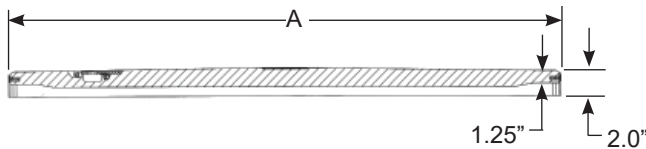
Replace your damaged lids with Emco solid composite or steel lids



Composite



3/8" Diamond Plate Steel



Part Number	Replaces	A
<u>3/8" Steel</u>		
A0717-039M	Morrison Bros. 318L-3812ACC	38.9"
A0717-039LID	Franklin 781-448-06, OPW E00618	39.5"
A0717-042LID	Flexing 14U-4210C	43.8"
A0717-044LID	Franklin 781-445-06, OPW E00626	44.3"
A0717-044M	Morrison Bros. 318L-4412ACC	44.9"
<u>Composite</u>		
A0716-039LID	Franklin 781-448-06, OPW E00618	39.5"
A0716-039M	Morrison Bros. 318L-3812ACC	38.9"
A0716-042LID	Flexing 14U-4210C	43.8"
A0716-044E	Environ WTM-4511, WTM-4521	45.5"
A0716-044M	Morrison Bros. 318L-4412ACC	44.9"
A0716-044LID	Franklin 781-445-06, OPW E00626	44.3"

Emco Composite Lids Have A 36 Month Warranty

ManholeTrak Warranty Tracking System is available on our website, www.emcoretail.com

Some extremely heavy traffic areas are not meant for composite manholes. Solve those problems with a drop-in heavy duty steel replacement.