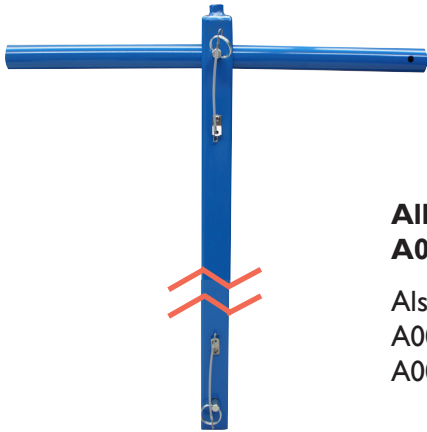




# Phase I EVR System Installation and Maintenance Tools



All tool bits are fully interchangeable with  
**A0081-001D Drive Shaft and A0081-001X Cross Bar**

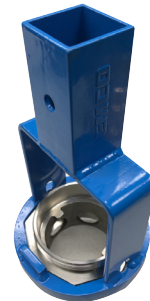
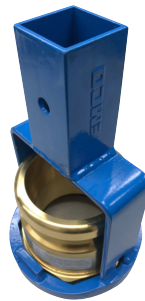
Also available:  
A0081-001A Extension  
A0081-001Q Quick Release Pin

## A0081-001B Adapter Wrench Bit



Installation and removal of:

- Models A0030-014, A0030-124S & A0076-124S Adapters
- Model 494096 Riser Seal

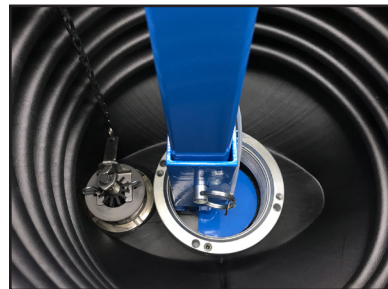


## A0081-001HB Spill Containment Wrench Bit



Installation and removal of:

- Model A1004EVR Series Spill Containers (Multiport or Direct Bury)



## A0081-001LB Riser Seal Wrench Bit



Installation and removal of:

- Model 494096 Riser Seal Center Insert
- Models A0030-024 & A0030-024A Adapters





# Phase I EVR System Installation and Maintenance Tools



## 493820 Drain Valve Wrench



Installation and removal of:

- Drain Valve Part Number 494118

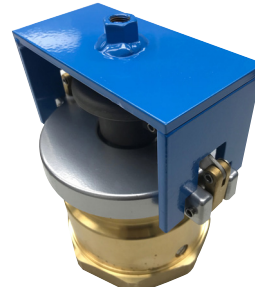


## 494240 Swivel Adapter Torque Test Wrench



Verification of static torque for:

- Models A0030-124S and A0076-124S  
per CARB test procedure TP-201.1B



## 566675 AI 100EVR Collar Drill Fixture



Drilling of collar mounting holes:

- Model AI 100EVR Overfill Valve



### Emco Wheaton Retail Corporation

2300 Industrial Park Dr. • Wilson, NC 27893 • 252-243-0150 • 252-243-4759 (fax) • [www.emcoretail.com](http://www.emcoretail.com)