

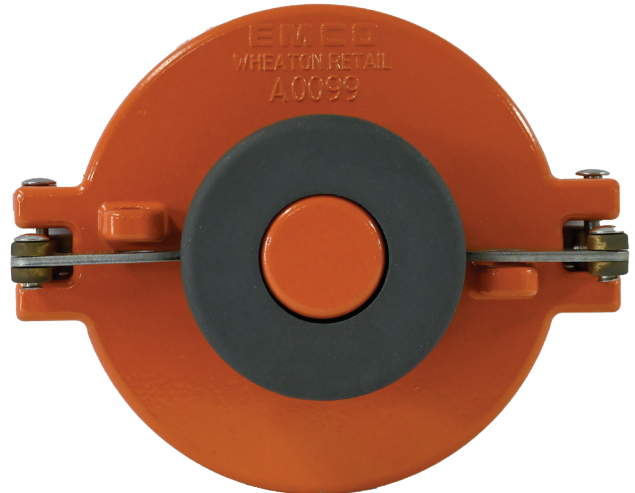
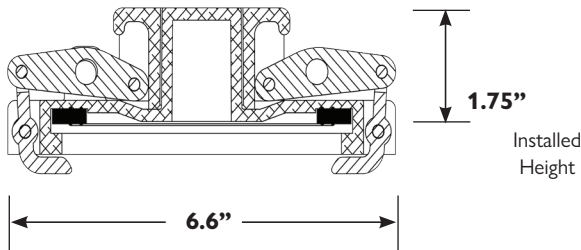
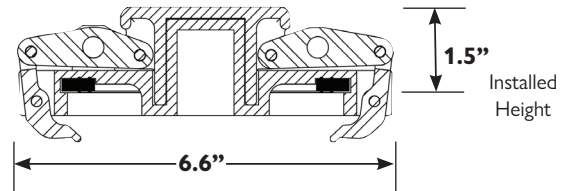


Approved under
Phase I EVR Executive
Order VR-105

A0097-005 A0099-002 ADAPTER CAPS



A0097-005
Fill Cap



A0099-002
Vapor Cap

Emco's adapter caps fit all Emco and major competitor 4" cam and groove style adapters. The caps are lockable and feature a self-aligning, toggle-action design with a center collar to prevent breakage. The fill cap is powdercoated gray and the vapor cap is powdercoated orange for identification purposes.

MATERIALS Body: Aluminum
Cams: Brass
Links: Steel
Seal: Buna-N

PART NUMBER	DESCRIPTION	WEIGHT
A0097-005	Tight Fill Cap 4", EVR	1.6 Lb.
A0099-002	Vapor Cap 4", EVR	1.4 Lb.
570739	Replacement Gasket Seal, Buna-N, For A0097 and A0099	0.1 Lb.