

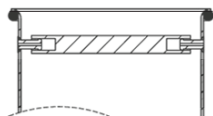
## ← CONVENTIONAL A0020

The Emco Wheaton A0020 Drop Tube is designed for use in both non-vapor recovery and dual point vapor recovery systems. Emco drop tubes are .05" thick for added strength and to reduce shipping damage. Tube I.D. is 3.915". Custom lengths are available upon request. Emco's new modular A0020 drop tubes are much more cost effective to ship and warehouse.

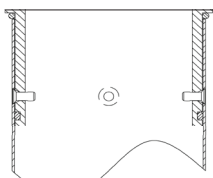
### COLLAR OPTIONS:



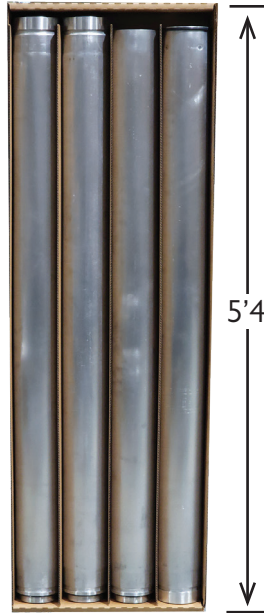
Standard rolled edge



Standard rolled edge with handle



Heavy duty collar



### MATERIALS

**Body:** Aluminum  
(anodized available)

**Seal:** Viton®

Viton® is a registered trademark of The Chemours Company

### APPROVALS

Phase I EVR E.O.  
VR-105  
(select models, **Modular approval coming soon**)

## MODULAR A0020



PART NUMBER	SIZE	HEIGHT	STYLE	WEIGHT	SHIPPING DIMS
<b>ROLLED EDGE</b>					
A0020EVR-004	4"	12'	Conventional	13.0 Lb.	5"x5"x146"
A0020EVR-005	4"	15'	Conventional	16.1 Lb.	5"x5"x182"
*A0020EVR-005E	4"	15'	Conventional	16.1 Lb.	5"x5"x182"
A0020EVR-005M	4"	15'	Modular	17.0 Lb.	5"x13"x64"
<b>HEAVY DUTY COLLAR</b>					
A0020EVRC-004	4"	12'	Conventional	13.7 Lb.	5"x5"x146"
A0020EVRC-005	4"	15'	Conventional	16.8 Lb.	5"x5"x182"
*A0020EVRC-005E	4"	15'	Conventional	18.9 Lb.	5"x5"x182"
A0020EVR-005MC	4"	15'	Modular	20.1 Lb.	5"x13"x64"
A0020EVR-007MC	4"	20'	Modular	23.1 Lb.	5"x17"x64"

Emco recommends the heavy duty collar option for EVR applications.  
\*Acceptable for E85/B100 Applications

PART NUMBER	DESCRIPTION	WEIGHT
493391	Riser Collar Kit w/Handle	2.0 Lb.
493391A	Riser Collar Kit	2.0 Lb.
569461	Collar O-ring	0.1 Lb.



493391  
Riser Collar Kit  
Includes Handle



493391A  
Riser Collar Kit