

# A0720, A0721 & A0722 MONITORING WELL MANHOLE

## INSTALLATION INSTRUCTIONS

**Step 1** Set monitoring well casing as desired, allowing proper clearance between the cap and collar assembly and manhole rim, to prevent damage.

**Step 2** Attach Cap and Collar Assembly, A0720-001. The collar to casing joint may be made in two ways; one collar accommodates both methods.

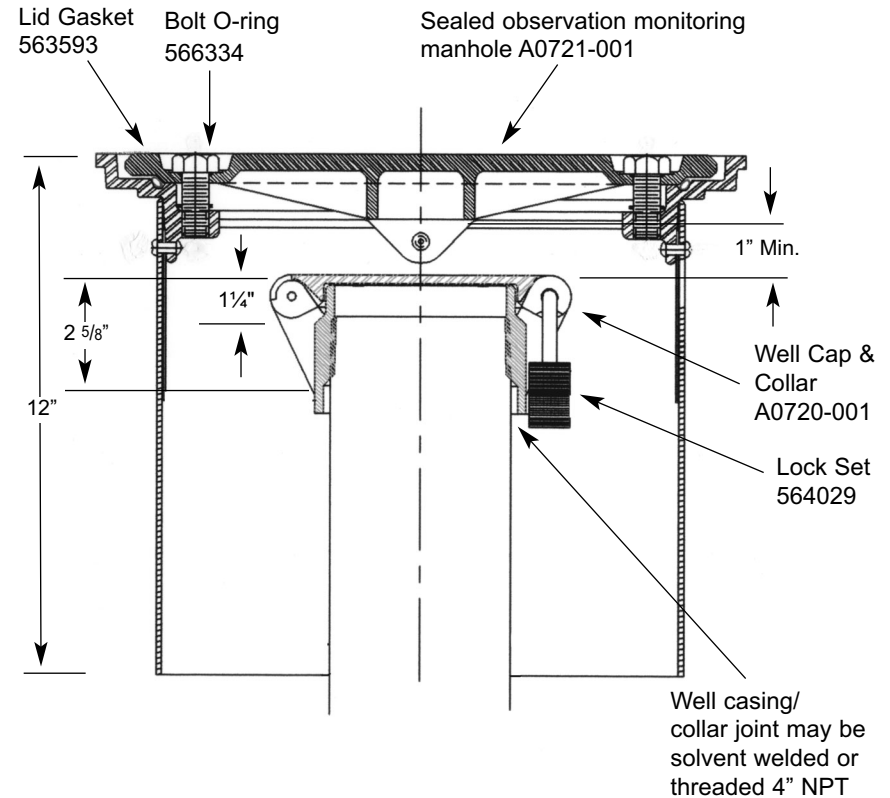
**2a** The collar is equipped with standard 4" NPT pipe threads. For a threaded joint, allow 1 1/4" above casing for cap and collar, plus cover clearance.

**2b** A 4" pipe socket is provided for the use of an adhesive or solvent welding agent. Allow 2 5/8" above casing for cap and collar, plus cover clearance.

**Important Note:** A non-solvent base contact adhesive such as Weldwood Non-flammable Contact Cement is recommended. The compatibility of the adhesive or solvent welding agent and the type of detector to be used on the particular site should be checked out prior to use. Petroleum based solvents or adhesives may produce vapors which falsely trigger the detection system and should not be used.

**Step 3** Set the Monitoring Manhole, A0721-001 over the capped casing. Adjust the height of the manhole rim to allow for 1/2" minimum of mounting above the finished grade. This will allow proper drainage of surface fluids.

**Step 4** Carefully backfill around manhole and proceed with concrete.



## MAINTENANCE

**Step 1** Lubricate retaining bolt threads periodically with a silicone based lubricant such as General Electric Silicone Oil. Do not use petroleum based lubricants.

**Step 2** Examine the retaining bolt O-ring, p/n 566334 and lid O-ring, p/n 563593, for damage or deterioration; replace if necessary.

**Important Note:** Seal is retained in groove with an adhesive from the factory. When replacing the original, be sure to use an adhesive that is compatible with your detection system. Do not use petroleum based or other adhesive types which may produce vapors that can trigger the detection system.