

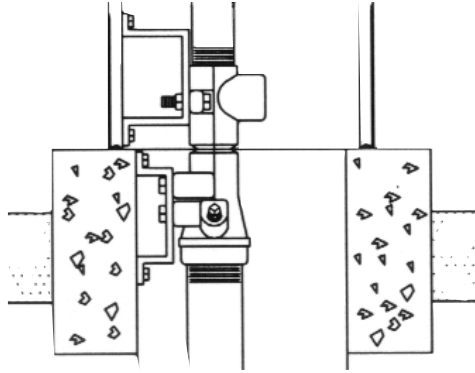
**EMCO**®  
WHEATON RETAIL

# **A0063**

## **VAPOR SHEAR VALVE**

### **INSTALLATION INSTRUCTIONS**

Emco Wheaton products should be used in compliance with applicable federal, state and local laws and regulations. Product selection should be based on physical specifications and limitations and compatibility with the environment and material to be handled. EMCO WHEATON MAKES NO WARRANTY OF FITNESS FOR A PARTICULAR USE.



**WARNING:** Proper operation is dependent on proper installation. The following instructions are provided to assist you in properly installing and maintaining your A0063 Vapor Shear Valve. Failure to follow these instructions may cause failure of the valve to function properly in the event of an emergency, resulting in a hazardous condition.

**WARNING:** The valve body must be rigidly anchored to a structural member within the island and to the dispenser to ensure breakage at the shear groove in the event of severe impact. Failure to provide a rigid mounting to both structures may result in failure of the valve to break at the shear groove. This may result in a loss of vapors or damage to underground piping, which could lead to a hazardous condition. The shear groove must be installed at the same level or a maximum of 1/2" above or below the top of the pedestal island. Failure to install the shear groove at this level may prevent the valve from breaking off in the event of severe impact, resulting in a hazardous condition.

## Vapor Shear Valve to Phase II Vapor Riser

1. Apply a non-hardening, gasoline resistant pipe thread seal compound to the threads of the phase II vapor recovery riser. Manually fasten the A0063 vapor shear valve on to the phase II vapor recovery riser to avoid cross threading.

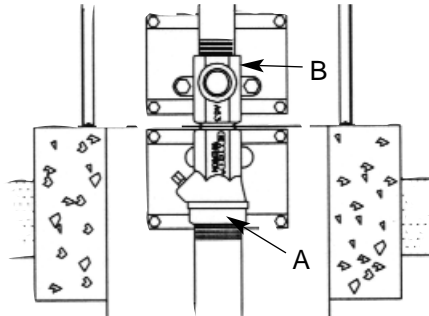
**IMPORTANT: Do not use Teflon tape with installing the A0063 vapor shear valve.**

2. Place the open end wrench over inlet end "A" and torque the A0063 vapor shear valve between 40 to 60 foot pounds.

**IMPORTANT:** Do not wrench above the shear section as this can result in damage to the A0063 Vapor Shear Valve.

**IMPORTANT:** The bottom portion of the A0063 Vapor Shear Valve must be mounted to a rigid surface of concrete or dispenser sump framework.

**Figure 1**



## Vapor Shear Valve to Dispenser

**IMPORTANT:** The installation of a 1 inch NPT piping union is required between the top of the A0063 vapor shear valve and the bottom of the dispenser vapor recovery piping.

1. Apply a non-hardening, gasoline resistant pipe thread seal compound to the threads of the 1 inch NPT close nipple, 1 inch NPT piping union and dispenser vapor recovery piping. Manually fasten both pieces on to the top of the A0063 vapor shear valve to avoid cross threading.

**IMPORTANT:** Do not use Teflon tape with installing the A0063 vapor shear valve.

2. Place the open end wrench over inlet end "B" and torque the 1 inch NPT piping union and dispenser vapor recovery piping between 40 to 65 foot pounds.

**IMPORTANT:** Do not wrench above the shear section as this can result in damage to the A0063 vapor shear valve.

**IMPORTANT:** The bottom portion of the A0063 shear vapor valve must be mounted to a rigid surface of concrete or dispenser sump framework.

## PREVENTIVE MAINTENANCE

1. None required

## PERFORMANCE SPECIFICATIONS

This component was factory tested to, and met, the following specifications.

1. TP-201.3 - Complies with leakrate of 0.00 CFH @ 2.00 inches of water column pressure.
2. TP-201.4 - Complies with the allowable component pressure drop of 0.00 inches of water @ 60 CFH.

**IMPORTANT: Leave these installation instructions, product warranty registration card and the warranty tag with the station owner and/or operator.**

### **Emco Wheaton Retail Corp.**

2300 Industrial Park Dr. • Wilson, NC 27893  
252-243-0150 • 252-243-4759 (fax)

p/n 569701  
Rev. B 03/13