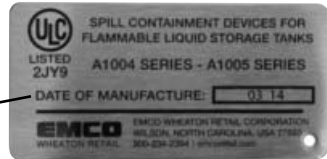


INSTALLATION INSTRUCTIONS

Permanent Identification:



Month/Year of Manufacture



Model #

| <u>Model Numbers</u> | <u>Description</u> |
|-----------------------------|---|
| 494350EVR | Primary Replacement Kit for A1004EVR-210S |
| 494467EVR | Primary Replacement Kit for A1004EVR-211S |

Service Tools Required:

- Needle Nose Pliers
- 3/8" Socket
- Socket with 1/4" Allen Wrench
- EMCO Adapter Wrench A0081-001
- 5/32" Allen Wrench
- 1/2" Drive 12" Extension
- EMCO Primary Wrench A0081-001H (New style, with Hinge)
- Torque Wrench w/ 40 ft-lbs. Setting
- 1/2" Drive 5" Extension
- EMCO Riser Seal Wrench 494120
- Torque Wrench w/ 200 ft-lbs. Setting
- Chain Wrench
- Non-hardening Gasoline Resistant Pipe Thread Sealant Compound
- Standard 1/2" Drive Ratchet

CAUTION:

1. Always barricade to keep pedestrians and vehicles from accessing the storage tank area during preventive maintenance and/ or compliance testing of the EMCO phase I EVR system.

Fill Application/Primary Unit Removal



Step 1: Remove the A1004EVR spill containment lid.



Step 2: Remove the A0097-005 fill adapter cap and dipstick or gage. Remove the ID tag(s) and set aside.



Step 3: Locate the 494118 drain valve. Begin by disassembling the pull chain and linkage. Use a pair of needle nose pliers to remove both cotter pins from the top, then lift and remove the filter.



Step 4: Use a 5/32" allen wrench to loosen and remove both set screws from the base of the A0030-124S swivel fill adapter.



Step 5: Use the EMCO Adapter Wrench p/n A0081-001 to loosen and remove the A0030-124S swivel fill adapter.



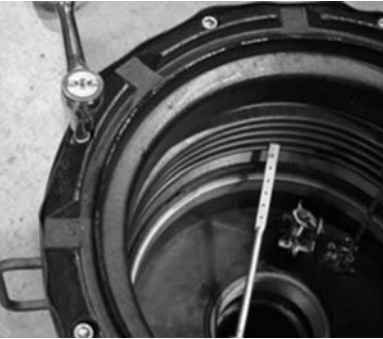
Step 6: Use the EMCO Riser Seal Wrench p/n 494120 to loosen the center insert located inside the 494096 riser seal.



Step 7: Use the EMCO Adapter Wrench p/n A0081-001 to loosen and remove the 494096 riser seal.



Step 8: Remove the drop tube from the fill riser by pulling upward.



Step 9: Use a ratchet with a 3/8" socket or 1/4" allen wrench to remove and discard all eight 3/8" stainless steel bolts located along the top of the rim of the A1004EVR spill containment.



Step 10: Use the EMCO Spill Containment Wrench p/n A0081-001H to loosen and remove the primary unit from the fill riser pipe.



Step 11: Remove the primary unit from inside the A1004EVR spill containment by pulling upwards. Discard the primary unit.

Vapor Application/Primary Unit Removal



Step 1: Remove the A1004EVR spill containment lid.



Step 2: Remove the A0099-002, -003 vapor adapter cap.



Step 3: Use a 5/32" allen wrench to loosen and remove both set screws from the base of the A0076-124S swivel vapor adapter.



Step 4: Use the EMCO Adapter Wrench p/n A0081-001 to loosen and remove the A0076-124S swivel vapor adapter.



Step 5: Use a standard 1/2" drive ratchet and chain wrench to loosen and remove the containment nipple.



Step 6: Use a ratchet with a 3/8" socket or 1/4" allen wrench to remove and discard all eight 3/8" stainless steel bolts located along the top of the rim of the A1004EVR spill containment.



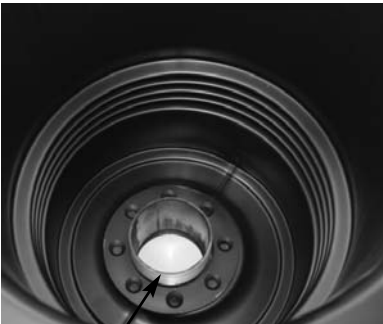
Step 7: Use the EMCO Spill Containment Wrench p/n A0081-001H to loosen and remove the primary unit from the vapor riser pipe.



Step 8: Remove the primary unit from inside the A1004EVR spill containment by pulling upwards. Discard primary unit.

Step 9: Determine if secondary containment thread is male or female.

Male Secondary



Male threads

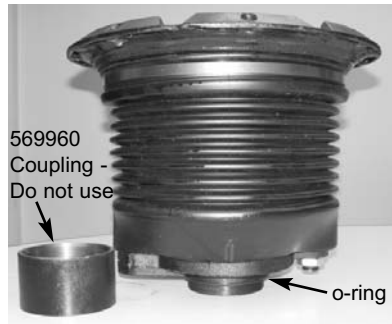


If secondary unit has male threads, when installing new primary unit, install with 569960 coupling installed.

Female Secondary



Female threads



If secondary has female threads, remove 569960 coupling from the new primary unit before installing. Make sure the o-ring is in place when installing the new primary unit.

Fill & Vapor Application/Primary Unit Installation



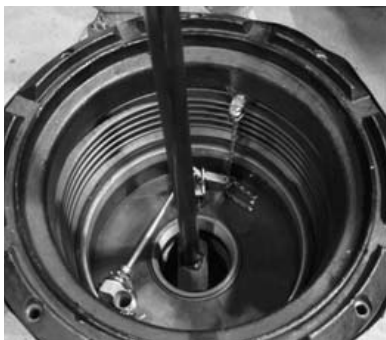
Step 1: All eight bolt holes must be clean and free of all debris before attempting to install the new primary liner.

IMPORTANT: Failure to do so may result in possible cross threading and permanent damage voiding warranty.



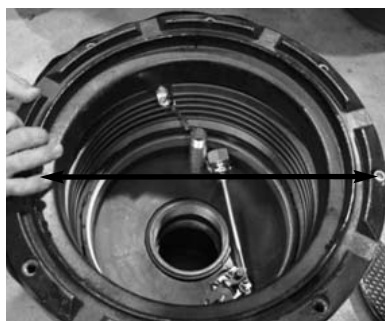
Step 2: Male secondary (step 9): Apply a non-hardening, gasoline resistant pipe thread sealant compound to the threads of the secondary unit.

Female secondary (step 9): Apply light oil or grease to O-ring and threads.



Step 3: Manually tighten the new primary unit onto the riser pipe to avoid cross threading. Use the EMCO Spill Containment Wrench p/n A0081-001H to tighten and torque between 100 and 150 ft-lbs.

IMPORTANT: As the primary unit is being torqued verify the A1004EVR spill containment bolt holes line up with the rim bolt holes.



Step 4: Manually install the eight new 3/8" stainless steel bolts. Use a ratchet with a 3/8" socket or 1/4" allen wrench to tighten and torque to 20 ft-lbs.

IMPORTANT: Tighten each bolt two complete turns at a time in a cross over pattern before applying final torque.

Re-install the dipstick or gage.
Re-install the ID tag(s).

Spill Containment with Overfill Prevention Valve or Straight Drop Tube, Riser Seal, Swivel Fill Adapter and Fill Adapter Cap

1. When installing the A1004EVR spill containment with an Emco Wheaton overfill prevention valve, please refer to the A1100EVR installation instructions.
2. When installing the A1004EVR spill containment with an Emco Wheaton straight drop tube, please refer to the A0020EVR and A0020EVRC installation instructions.

IMPORTANT: The fill riser installation will only allow for one type of EVR drop tube configuration.

3. When installing the A1004EVR spill containment with an Emco Wheaton riser seal, please refer to the 494096 installation instructions.
4. When installing the A1004EVR spill containment with an Emco Wheaton swivel fill adapter, please refer to the A0030-124S installation instructions.
5. When installing the A1004EVR spill containment with an Emco Wheaton fill adapter cap, please refer to the A0097-005 installation instructions.

Spill Containment with Swivel Vapor Adapter and Vapor Adapter Cap

1. When installing the A1004EVR spill containment with an Emco Wheaton swivel vapor adapter, please refer to the A0076-124S installation instructions.
2. When installing the A1004EVR spill containment with an Emco Wheaton vapor adapter cap, please refer to the A0099-002, -003 installation instructions.

Clean-up and Finish

1. Clean and remove all debris from the inside of the A1004EVR spill containment, drain valve and filter assembly.
2. Paint the new A1004EVR spill containment rim to match the color of the lid.
3. Once the paint on the rim has dried, re-install the A1004EVR spill containment lid.

PREVENTIVE MAINTENANCE

1. Quarterly verify that the inside of the A1004EVR spill containment is free of all dirt, gravel, debris, etc. Should cleaning be required, wipe the inside wall and bottom of the A1004EVR spill containment using soapy water and a disposable towel.
2. After each delivery, the station operator must remove any standing fuel from the inside of the A1004EVR spill containment. If gasoline does not drain, refer to the #494118 drain valve preventive maintenance instructions.

IMPORTANT: During routine preventive maintenance all damaged components must be replaced with factory authorized service kits.

Service Repair Kits

| <u>Part Number</u> | <u>Description</u> |
|--------------------|-------------------------------|
| • 494118 | Drain Valve Kit |
| • A1004-210LID | Lid and Seal |
| • 494350EVR | -210S Primary Replacement Kit |
| • 494467EVR | -211S Primary Replacement Kit |

PERFORMANCE SPECIFICATIONS

This component was factory tested to, and met, the following specifications.

1. TP-201.1D - Complies with the allowable maximum leakrate of 0.17 CFH @ 2.00 inches of water.

IMPORTANT: Leave these installation instructions, product warranty registration card and the warranty tag with the station owner and/or operator.

Tank Operator Responsibilities

Tank operator must ensure that all Federal, Provincial and local codes are being met during the filling of the tank.

All operators must be familiar with proper filling procedures.

The operator responsible for transferring product to an above ground storage tank must take all reasonable steps to prevent spillage.

The delivery hose from the tank's fill pipe must not be disconnected before the hose has been drained completely.

When tank vehicles are being unloaded, the vehicle operators must remain

- (a) in constant view of the transfer nozzle and fill pipe; and
- (b) in constant attendance at the discharge control valve.

Emco Wheaton Retail Corp.

2300 Industrial Park Dr. • Wilson, NC 27893
252-243-0150 • 252-243-4759 (fax)

p/n 569830
Rev. M 07/16