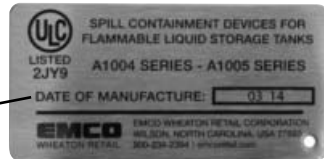


INSTALLATION INSTRUCTIONS

Permanent Identification:



Month/Year of Manufacture



Model #

<u>Model Numbers</u>	<u>Description</u>
494360EVR	Primary Replacement Kit for A1004EVR-210A
494466EVR	Primary Replacement Kit for A1004EVR-211A

Service Tools Required:

- Needle Nose Pliers
- 3/8" Socket
- Socket with 1/4" Allen Wrench
- EMCO Adapter Wrench A0081-001C
- 5/32" Allen Hex Wrench
- 1/2" Drive 12" Extension
- EMCO Primary Wrench A0081-001H
- Torque Wrench w/ 40 ft-lbs. Setting
- 1/2" Drive 5" Extension
- EMCO Riser Seal Wrench 494120
- Torque Wrench w/ 200 ft-lbs. Setting
- Chain Wrench
- Non-hardening Gasoline Resistant Pipe Thread Sealant Compound
- Standard 1/2" Drive Ratchet

CAUTION:

1. Always barricade to keep pedestrians and vehicles from accessing the storage tank area during preventive maintenance and/ or compliance testing of the EMCO phase I EVR system.

Fill Application/Primary Liner Removal



Step 1: Remove the A1004EVR spill containment lid.



Step 2: Remove the A0097-005 fill adapter cap. Remove the ID tag(s) and set aside.



Step 3: Locate the 494118 drain valve. Begin by disassembling the pull chain and linkage. Use a pair of needle nose pliers to remove both cotter pins from the top, then lift and remove the filter.



Step 4: Use a 5/32" allen wrench to loosen and remove both set screws from the base of the A0030-124S swivel fill adapter



Step 5: Use the EMCO Adapter Wrench p/n A0081-001C to loosen and remove the A0030-124S swivel fill adapter.



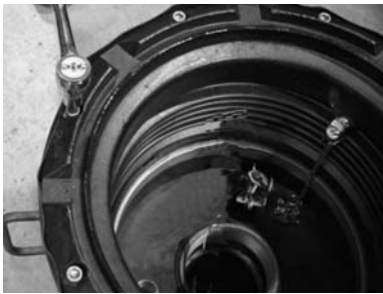
Step 6: Use the EMCO Riser Seal Wrench p/n 494120 to loosen and remove the center insert located inside the 494096 riser seal.



Step 7: Use the EMCO Adapter Wrench p/n A0081-001C to loosen and remove the 494096 riser seal.



Step 8: Remove the drop tube from the fill riser by pulling upward.



Step 9: Use a ratchet with a 3/8" socket or 1/4" allen wrench to remove and discard all eight 3/8" stainless steel bolts located along the top of the rim of the A1004EVR spill containment.



Step 10: Use the EMCO Spill Containment Wrench p/n A0081-001H to loosen and remove the primary liner from the fill riser pipe.



Step 11: Remove the primary liner from inside the A1004EVR spill containment by pulling upwards. Once the primary liner is completely out, please discard.

Vapor Application/Primary Liner Removal



Step 1: Remove the A1004EVR spill containment lid.



Step 2: Remove the A0099-002, -003 vapor adapter cap.



Step 3: Use a 5/32" allen wrench to loosen and remove both set screws from the base of the A0076-124S swivel vapor adapter.



Step 4: Use the EMCO Adapter Wrench p/n A0081-001C to loosen and remove the A0076-124S swivel vapor adapter.



Step 5: Use a standard 1/2" drive ratchet and chain wrench to loosen and remove the containment nipple.



Step 6: Use a ratchet with a 3/8" socket or 1/4" allen wrench to remove and discard all eight 3/8" stainless steel bolts located along the top of the rim of the A1004EVR spill containment.



Step 7: Use the EMCO Spill Containment Wrench p/n A0081-001H to loosen and remove the primary liner from the vapor riser pipe.



Step 8: Remove the primary liner from inside the A1004EVR spill containment by pulling upwards. Once the primary liner is completely out, please discard.

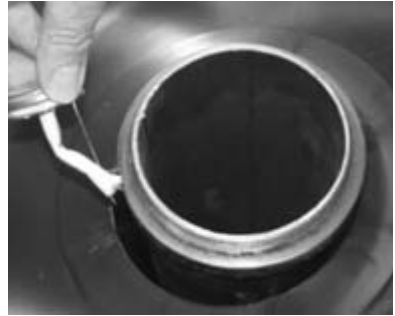
Step 9: Determine if a coupling is installed on the riser pipe. If not, proceed to the next page. If a coupling is installed, use a strap or chain wrench to remove the coupling. Install the A0031-250 Riser Extension (included) to achieve the proper height.

Fill & Vapor Application/Primary Liner Installation

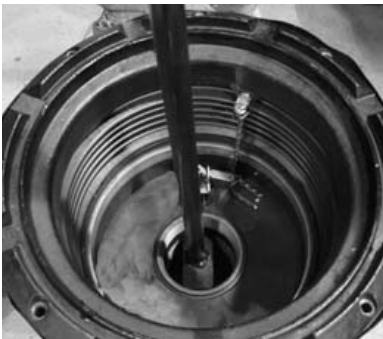


Step 1: All eight bolt holes must be clean and free of all debris before attempting to install the new primary liner.

IMPORTANT: Failure to do so may result in possible cross threading and permanent damage voiding warranty.



Step 2: Apply a non-hardening, gasoline resistant pipe thread sealant compound to the threads of the riser pipe.



Step 3: Manually tighten the new primary liner onto the riser pipe to avoid cross threading. Use the EMCO Spill Containment Wrench p/n A0081-001H to tighten and torque between 100 and 150 ft-lbs.

IMPORTANT: As the primary liner is being torqued verify the A1004EVR spill containment bolt holes line up with the rim bolt holes.



Step 4: Manually install the eight new 3/8" stainless steel bolts. Use a ratchet and 3/8" socket to tighten and torque to 40 ft-lbs.

IMPORTANT: Tighten each bolt two complete turns at a time in a cross over pattern before applying final torque.

Re-install the drain valve filter.
Re-install the ID tag(s).

Spill Containment with Overfill Prevention Valve or Straight Drop Tube, Riser Seal, Swivel Fill Adapter and Fill Adapter Cap

1. When installing the A1004EVR spill containment with an Emco Wheaton overfill prevention valve, please refer to the A1100EVR installation instructions.
2. When installing the A1004EVR spill containment with an Emco Wheaton straight drop tube, please refer to the A0020EVR and A0020EVRC installation instructions.

IMPORTANT: The fill riser installation will only allow for one type of EVR drop tube configuration.

3. When installing the A1004EVR spill containment with an Emco Wheaton riser seal, please refer to the 494096 installation instructions.
4. When installing the A1004EVR spill containment with an Emco Wheaton swivel fill adapter, please refer to the A0030-124S installation instructions.
5. When installing the A1004EVR spill containment with an Emco Wheaton fill adapter cap, please refer to the A0097-005 installation instructions.

Spill Containment with Swivel Vapor Adapter and Vapor Adapter Cap

1. When installing the A1004EVR spill containment with an Emco Wheaton swivel vapor adapter, please refer to the A0076-124S installation instructions.
2. When installing the A1004EVR spill containment with an Emco Wheaton vapor adapter cap, please refer to the A0099-002, -003 installation instructions.

Clean-up and Finish

1. Clean and remove all debris from the inside of the A1004EVR spill containment, drain valve and filter assembly.
2. Paint the new A1004EVR spill containment rim to match the color of the lid.
3. Once the paint on the rim has dried, re-install the A1004EVR spill containment Lid.

Perform test procedures as specified by customer or local regulations.

PREVENTIVE MAINTENANCE

1. Quarterly verify that the inside of the A1004EVR spill containment is free of all dirt, gravel, debris, etc. Should cleaning be required, wipe the inside wall and bottom of the A1004EVR spill containment using soapy water and a disposable towel.
2. After each delivery, the station operator must remove any standing fuel from the inside of the A1004EVR spill containment. If gasoline does not drain, refer to the #494118 drain valve preventive maintenance instructions.

IMPORTANT: During routine preventive maintenance all damaged components must be replaced with factory authorized service kits.

Service Repair Kits

<u>Part Number</u>	<u>Description</u>
494118	Drain Valve Kit
A1004-210LID	Lid and Seal
494360EVR	-210A Primary Replacement Kit
494466EVR	-211A Primary Replacement Kit

PERFORMANCE SPECIFICATIONS

This component was factory tested to, and met, the following specifications.

1. TP-201.1D - Complies with the allowable maximum leakrate of 0.17 CFH @ 2.00 inches of water.

IMPORTANT: Leave these installation instructions, product warranty registration card and the warranty tag with the station owner and/or operator.

IMPORTANT: Tank Operator Responsibilities

- Tank operator must ensure that all Federal, Provincial and local codes are being met during the filling of the tank.
- All operators must be familiar with proper filling procedures.
- The operator responsible for transferring product to an above ground storage tank must take all reasonable steps to prevent spillage.
- The delivery hose from the tank's fill pipe must not be disconnected before the hose has been drained completely.
- When tank vehicles are being unloaded, the vehicle operators must remain:
(a) in constant view of the transfer nozzle and fill pipe; and
(b) in constant attendance at the discharge control valve.

Emco Wheaton Retail Corp.

2300 Industrial Park Dr. • Wilson, NC 27893
252-243-0150 • 252-243-4759 (fax)

p/n 569831
Rev. K 08/16