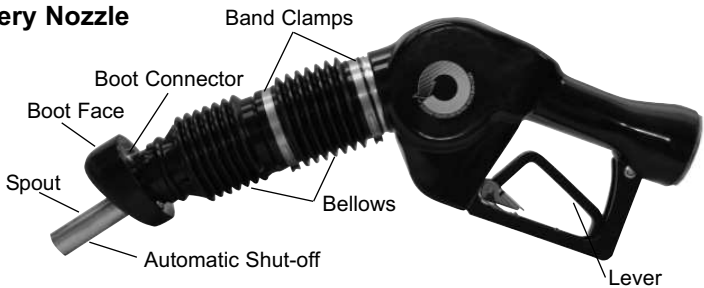


**Packing List:**

- |                         |                        |
|-------------------------|------------------------|
| (1) Spout               | (1) Interlock Guide    |
| (1) Bellows O-ring      | (1) Interlock Push Rod |
| (2) Bellows Band Clamps |                        |



**A4005EVR Balance  
Vapor Recovery Nozzle**



**INSTALLATION INSTRUCTIONS**

**Service Tools Required:**

- Flat Head Screw Driver w/ Fine Tip
- 15" Crescent Wrench
- Torque Wrench w/ 45-55 ft-lbs. Setting
- Bench Vise w/ 5" Jaw Width
- Bellows Retainer Plate Tool p/n 494712EVR
- Bellows Band Clamp Crimp Tool p/n 494652EVR
- Gasoline Approved Container
- Scribe Tool w/ 90 Degree Tip
- Needle Nose Pliers
- 40mm Crows Foot
- Snap Ring Pliers w/ Fine Tip

**CAUTION:**

1. Always barricade work area to keep pedestrians and vehicles from accessing the dispenser.
2. Always use a gasoline approved container or test can when performing any type of preventive maintenance.
3. Before attempting to install, remove or service the A4005EVR nozzle, turn off and tag out power to the corresponding dispenser.
4. Before attempting to install, remove or service the A4005EVR nozzle, close the emergency impact valves located inside the base of the dispenser. Relieve the line pressure and standing fuel through the nozzle spout into a gasoline approved container by compressing the bellows and squeezing the lever.

**ATTENTION:**

1. *Barricader Toujours zone de travail pour maintenir les piétons et les véhicules d'accéder au distributeur.*
2. *Toujours utiliser une essence contenant approuvé ou test peut quand exécuter tout type de maintenance préventive.*
3. *Avant d'essayer d'installer, enlever ou de réparer la buse de 4005EVR, éteignez et la puissance de déconsignation au distributeur correspondant.*
4. *Avant d'essayer d'installer, enlever ou de réparer la buse de A4005EVR, fermer les vannes d'impact d'urgence situés à l'intérieur de la base du distributeur. Relâcher la pression de ligne et de carburant restant dans le bec de la buse dans un récipient approuvé pour l'essence en comprimant le soufflet et sur le levier.*

**IMPORTANT: Failure to perform cautions 3 and 4 may result in a hazardous gasoline spill, damage to equipment, personal injury and/or death.**

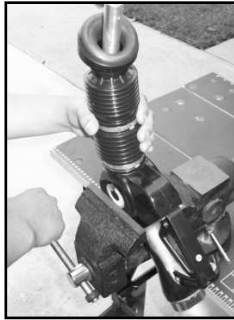
***IMPORTANT: Ne pas effectuer les mises en garde 3 et 4 peut entraîner un déversement d'essence dangereux, des dommages matériels, des blessures corporelles et/ou la mort.***

**Pre-Inspection:**

1. Carefully unpack and remove all kitted parts from the shipping container and evaluate for any kind of damage. Verify that no parts are missing from the packing list before proceeding with the installation.

**Pre-Installation:**

2. Empty all standing fuel within the spout and bellows into a gasoline approved container before attempting to service the spout.



3. It is unnecessary to remove the A4005EVR nozzle from the fueling point during the removal and installation of the spout. Use the bench vise to properly secure the A4005EVR nozzle during service.

**Installation:**

**Removing the Existing Bellows & Boot Face**



4. Locate the top bellows band clamp. Use the flat head screw driver to dislodge the locking mechanism and remove the band clamp from the bellows.



5. Locate the bottom bellows band clamp. Use the flat head screw driver to dislodge the locking mechanism and remove the band clamp from the bellows.



6. Remove the bellows and boot face from the A4005EVR nozzle. Grab the bellows and pull away from the nozzle body.



7. Use the scribe tool to remove the bellows o-ring.

**IMPORTANT: Properly discard bellows band clamps and bellows o-ring.**

***IMPORTANT: Recyclez soufflets colliers de serrage et soufflet o-ring.***

### Removing the Existing Spout



8. Locate the snap ring on the spout. Use the snap ring and needle nose pliers to remove the snap ring from the machined groove. Slide the snap ring upward.



9. Disassemble the interlock guide. Remove the top piece by pulling upward and sliding over the spout. Remove the bottom piece by sliding over the spout.



10. Use the 15" crescent wrench to loosen the spout nut. Unfasten the spout nut by hand to avoid cross threading.



11. Remove the spout by slowly pulling upward.



12. Use the needle nose pliers to remove the interlock push rod.

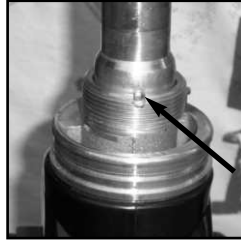
**IMPORTANT: Properly discard all removed components.**

***IMPORTANT: jeter tous les composants retirés.***

## Installing the New Spout



13. Use the needle nose pliers to install the new interlock push rod.



14. Install the new spout by inserting the vent tube connector into the nozzle vent port. Slowly push downward on the spout and align the dimple on the spout with the notch on the nozzle body.



15. Fasten the new spout nut by hand onto the nozzle threads to avoid cross threading. Use the 40mm crows foot and torque wrench to tighten the spout nut between 45 to 55 ft-lbs of torque.

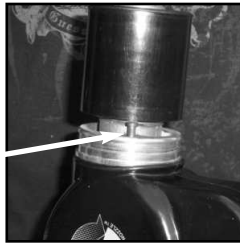


16. Install the new interlock guide by sliding the top and bottom pieces over the spout. Press the top piece into the bottom piece.



17. Use the snap ring and needle nose pliers to install the new snap ring into the machined groove located on the spout. Slide the snap ring downward until seated properly.

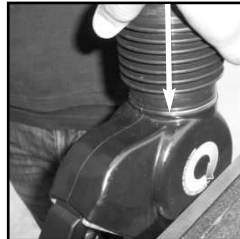
### Installing the Existing Bellows & Boot Face



18. Before attempting to install the existing bellows & boot face verify that the top of the interlock push rod is properly aligned with the bottom edge of the interlock guide.



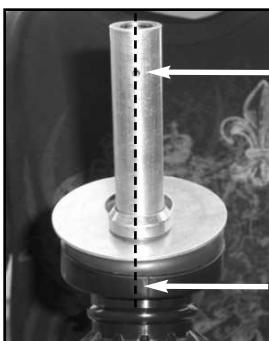
19. Install the new bellows o-ring. Verify that the o-ring seats properly into the machined groove.



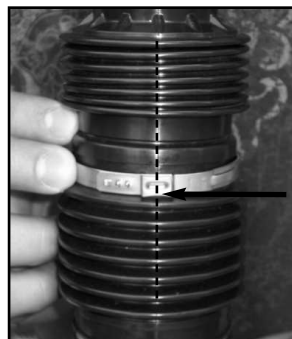
20. Slide the bellows over the spout until the end reaches the nozzle body. Push down over the bellows o-ring until properly seated.



21. Use the bellows retainer plate tool p/n 494712EVR to secure and lock the bellows and boot face in place.



22. Slowly rotate the bellows until the parting line of the boot connector is aligned with the spout and automatic shut-off.

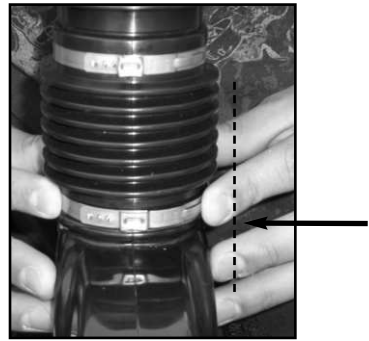


23. Install the new top bellows band clamp into the groove of the bellows. Lock and align the crimp portion with the parting line of the bellows.



24. Use the bellows band clamp crimp tool p/n 494652EVR to crimp and secure into place.





25. Install the new bottom bellows band clamp into the groove of the bellows. Lock and align the crimp portion with the parting line of the bellows.

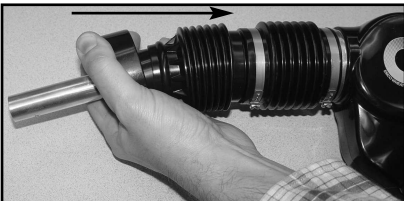


26. Use the bellows band clamp crimp tool p/n 494652EVR to crimp and secure into place.



27. Remove the bellows retainer plate tool p/n 494712EVR from bellows and spout.
28. Remove the A4005EVR nozzle from the bench vise.

**Post-Functional Test:**



29. Functional test the insertion interlock of the A4005EVR nozzle by compressing the bellows and then squeezing the lever. The A4005EVR nozzle will not function unless the insertion interlock is properly engaged.

30. Functional test the automatic shutoff of the A4005EVR nozzle. Begin dispensing by compressing the bellows and then squeezing the lever. Place the hold-open latch in "high" clip position to secure the lever. Dispense one gallon of fuel into a gasoline approved container. At the same time, lower the spout tip into the standing fuel until the automatic shut is completely submersed. The main valve of the A4005EVR nozzle will automatically close causing fuel flow to stop.

**IMPORTANT: Perform step 30 a minimum of three times to assure the insertion interlock , hold open latch and the automatic shutoff of the A4005EVR nozzle are operating properly. According to UL requirement 842, the fuel flow rate must be greater than 3 gallons per minute for the automatic shutoff to operate properly. A common cause of low flow rates are dirty or clogged dispenser filters.**

***IMPORTANT: Exécutez l'étape 30 un minimum de trois fois pour assurer le verrouillage de l'insertion, maintenez loquet d'ouverture et la fermeture automatique de la buse de A4005EVR fonctionnent correctement. Selon exigence UL 842, le débit de carburant doit être supérieure à 3 litres par minute pour la fermeture automatique pour fonctionner correctement. Une cause fréquente de faibles débits sont des filtres de distribution sales ou bouchées.***

**Post-Installation:**

31. Place the A4005EVR nozzle back onto the dispenser cradle.

**PREVENTIVE MAINTENANCE**

1. Weekly inspect the spout for sheared, bent or blocked vent hole. Replace with factory authorized service kits.

<u>Part Number</u>	<u>Description</u>
492834EVR	Spout Kit

**PERFORMANCE STANDARDS & SPECIFICATIONS**

This component was factory tested to, and met the following specifications:

1. Meets ARB Material Compatibility with Fuel Blends as per Section 3.8 of CP-201.
2. Meets ARB Capable of Refueling Any Vehicle Standards as per Section 4.7.1 of CP-201.
3. Meets ARB Spout Dimension Standards as per Section 4.7.3 of CP-201.

**IMPORTANT: Leave these installation instructions, product warranty registration card and the warranty tag with the station owner and/or operator.**

**IMPORTANT: Laissez ces instructions d'installation, la garantie du produit carte d'enregistrement et l'étiquette de garantie avec le propriétaire de la station et/ou opérateur.**

**Emco Wheaton Retail Corp.**

2300 Industrial Park Dr. • Wilson, NC 27893  
252-243-0150 • 252-243-4759 (fax)

p/n 570181  
Rev. E, 05/14