



# A1005-505CC5 Series

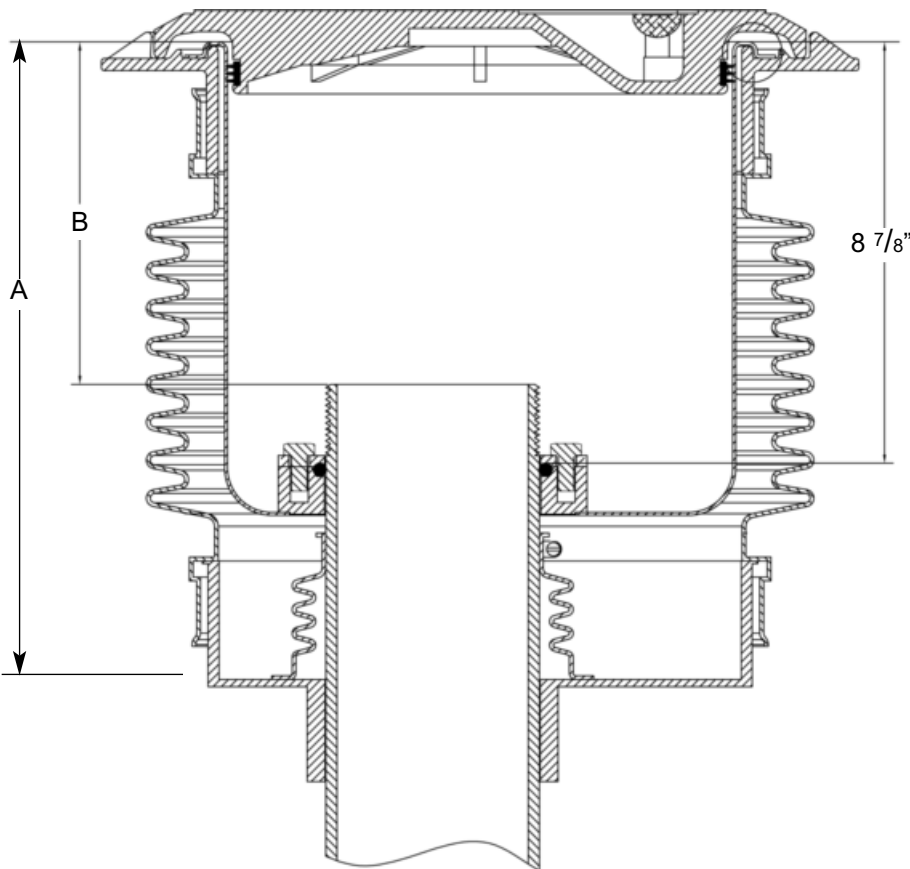
## Stainless Steel Spill Containment Replacement for OPW 1SC-2105

US Patents 8,425,145 B2  
and 8,425,145 B

### INSTALLATION INSTRUCTIONS

Refer to your local regulations and AHJ before installation of this product

**Step 1:** Measure Dimension A as shown on the drawing below. Measure from the drain channel to the top of the flange in the existing bucket. Write the dimension down. This dimension must be greater than 12" for the Emco stainless steel liner to work.



**Step 2:** Measure Dimension B from inside the rim (see drawing above) to the top of the existing nipple. This dimension must be greater than 6 3/4" for a vapor application and 6 1/4" for a fill application (using Emco swivel adapters). If the dimensions are less than specified, an alternative nipple, or a low profile cap and/or adapter will be required. May require use of a non-swivel adapter.

**Step 3:** Loosen top boot clamp and slip down on riser as far as possible. Retighten. If necessary, remove boot to allow clearance for bucket.

#### Emco Supplied Parts

Stainless steel bucket  
(2) O-rings  
(3) Split flanges  
(9) Stainless steel bolts & washers  
Offset ring  
Lid w/seal

#### Required Kits

Pipe nipple (see chart below)  
If existing bucket has a drain...  
A1005-505DP Drain Plug Kit *or*  
A1005-505DPE Drain Plug Kit  
w/epoxy

#### Required Tools

Angle grinder w/ cut-off wheel  
Hammer and chisel  
9/16" socket  
1/2" socket  
12" extension and ratchet  
Chain wrench or strap wrench  
Pipe sealant  
Urethane sealant  
(such as Emco Z0839-001)  
Adapter wrench  
Wire brush  
Plumbers putty or heavy grease

#### Purchased Separately from Emco

Emco A0333-002 Hand Pump  
Emco 494833 Test Cover  
Emco A1004-210TEST



**Step 4:** Measure to ensure a minimum of 12" to the boot clamp. Measure from the drain channel down 8 7/8". At this dimension, you must have a clean pipe surface. This is where the o-ring will seal. Use Scotch Brite pad to clean the pipe at this height, if necessary.



# A1005-505CC5 Series

## Stainless Steel Spill Containment



**Step 5:** Lower rim portion must be removed. Place an expansion ball in the riser and fill bucket with water. Score lower rim with grinding wheel. Remove lower rim with hammer and chisel. Care should be taken not to break the rim.



**Step 6:** Test fit the stainless steel bucket in the existing spill bucket to ensure rim clearance before pumping out the water. If a drain exists, the stainless steel bucket may not go down completely. This step is to ensure bucket clears remnants of rim tabs only. If necessary, chisel clearance in the rim where the cast iron lugs were located.

Use Emco A0333 Hand Pump to pump out water.



**Step 7:** Test fit the new stainless steel bucket to ensure that it sits completely flat on the top of the rim surface, then remove the stainless steel bucket.



**Step 8:** Thoroughly clean the existing rim surface with a wire brush, then with a solvent such as lacquer thinner to ensure there is no oily residue on the rim. A bead of urethane sealant, placed on the underside cavity of the new bucket, may be used to prevent groundwater from entering the existing containment.



**Step 9:** Install the new stainless steel bucket over the nipple, pushing it down completely to ensure that it seats fully on the existing rim.



**Step 10:** Install the small cross section o-ring in the groove of the lower flange. Make certain o-ring groove is clean and free of debris.



**Step 11:** Install the offset ring, aligning large section of flange with largest open area around the nipple.



# A1005-505CC5 Series

Stainless Steel Spill Containment



**Step 12:** Install the large cross section o-ring.



**Step 13:** Install the three split flanges using the nine supplied stainless steel bolts and washers.



**Step 14:** Hand tighten all nine bolts, ensuring that the bucket is completely down and flat on the rim. Using a 9/16" socket, tighten each of the ten bolts to 15 ft. lbs. Pressure may need to be applied to ensure the liner does not shift while tightening bolts.



**Step 15:** Install adapter and cap per instructions included with each.

**Step 16: Testing** - Perform one of the following test procedures as specified by customer.

**Integrity Test** - Perform per following procedure, with customer specified cap and adapter.

**Hydrostatic Test** - Perform if specified per customer or local regulations. Perform per local requirements.



# A1005-505CC5 Series

## Stainless Steel Spill Containment

### Integrity Test Procedure

#### **Equipment** (not supplied)

Emco A1004-210TEST Vacuum Apparatus w/test adapter 494343

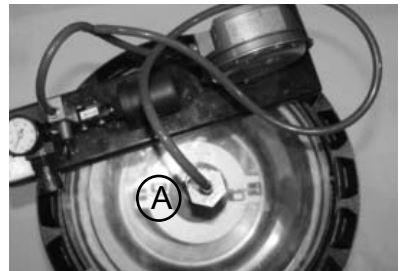
Emco 494833 Test Cover

Timer

Air supply

#### **Procedure**

1. Line top surface of stainless steel bucket with plumbers putty.  
(Heavy grease may be used, but may not work properly on rough surfaces.)
2. Place test cover over plumbers putty or heavy grease.
3. Insert brass plug from test unit into opening in test cover (A).
4. Attach air pressure source to air pressure regulator on vacuum apparatus.
5. Slowly apply vacuum of 30" water column (2.2" mercury) to the interstitial space, by moving the toggle switch. Wait 30 seconds. Reapply 30" water column.
6. Ensure switch is in off (center) position, start timer and record remaining vacuum after 1 minute.
7. If the remaining vacuum after 1 minute is 26" water column (1.9" mercury) or greater, the containment is tight.
8. If the test fails, determine if leak point is at test cover seal, cap or adapter, or base flange o-ring by spraying a soap solution to each area and watching for bubbles. Repair as required and retest.
9. Replace components.



### Follow-Up Testing

If follow-up or annual retesting is required by local/state regulation, use the above procedure.

### Tank Operator Responsibilities

Tank operator must ensure that all Federal, Provincial and local codes are being met during the filling of the tank.

All operators must be familiar with proper filling procedures.

The operator responsible for transferring product to an above ground storage tank must take all reasonable steps to prevent spillage.

The delivery hose from the tank's fill pipe must not be disconnected before the hose has been drained completely.

When tank vehicles are being unloaded, the vehicle operators must remain

- (a) in constant view of the transfer nozzle and fill pipe; and
- (b) in constant attendance at the discharge control valve.

#### **Emco Wheaton Retail**

2300 Industrial Park Dr. • Wilson, NC 27893 • 252-243-0150 • 252-243-4759 (fax)