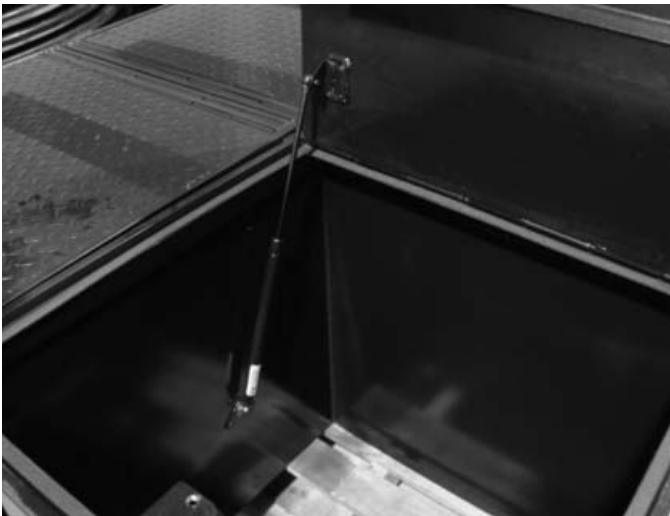


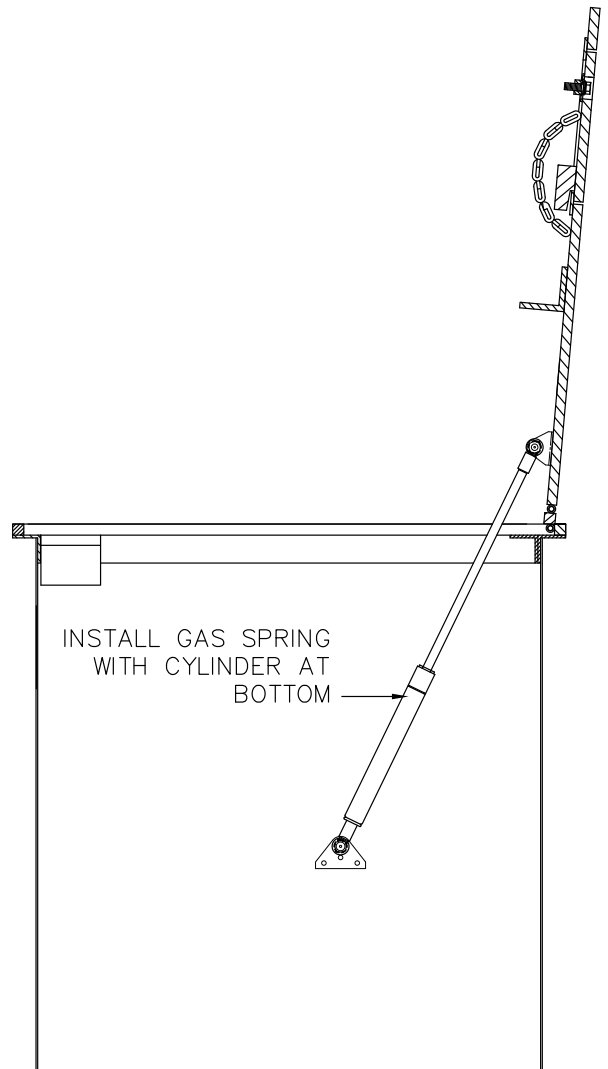
## INSTALLATION INSTRUCTIONS

**Parts list:**

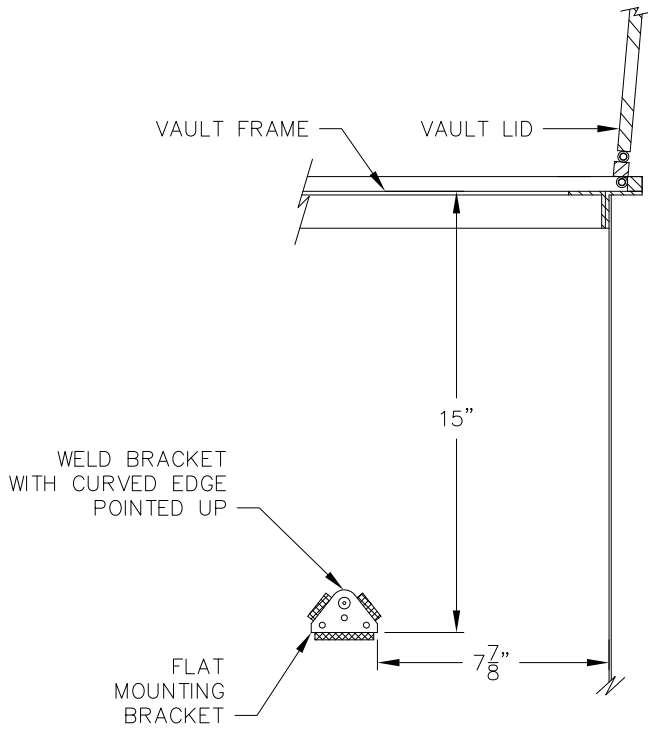
- (1) gas spring
- (1) upper spring mounting bracket (with ball stud)
- (1) lower spring mounting bracket (with ball stud)



Inside view of vault showing orientation of gas spring



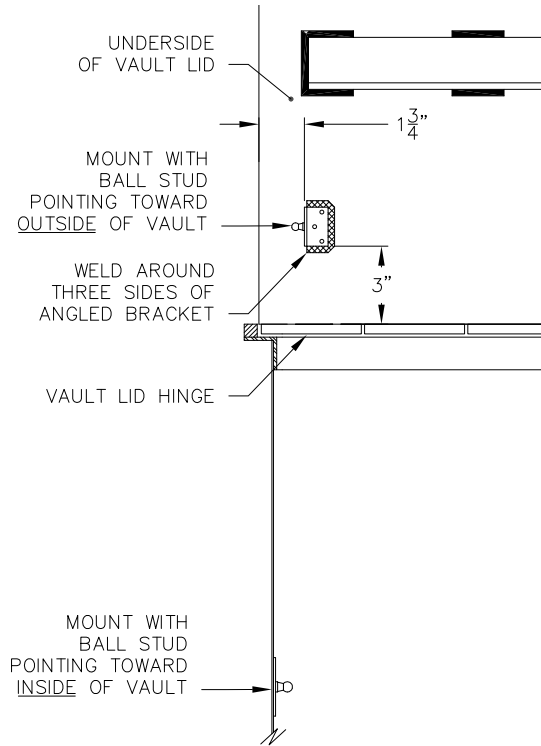
Side view of vault (cutaway) showing orientation of gas spring



**Step 1:** Using a grease pencil or soapstone pencil, mark location of lower spring mounting bracket (made from U-channel) as shown. Tack weld bracket in place with ball stud on bracket pointing towards vault opening. Continuously weld bracket edges to inside of vault as shown.

**Step 3:** Install gas spring as shown. Installation is complete.

Front view of vault (cutaway) showing orientation of gas spring



**Step 2:** Using a grease pencil or soapstone pencil, mark location of upper spring mounting bracket (made from angle iron) as shown. Tack weld bracket in place with ball stud pointing towards outside edge of vault lid. Continuously weld bracket edges to underside of vault lid.

