



A1005-905/-915 Series Below Grade Stainless Steel Spill Containment

INSTALLATION INSTRUCTIONS

Riser pipe length calculations:

A = 15.5" (5 gallon); 24.5" (15 gallon)

B = Grade level top of tank bung

C = B - A

D = C+2" (includes 1" for concrete crown around manhole)

Example:

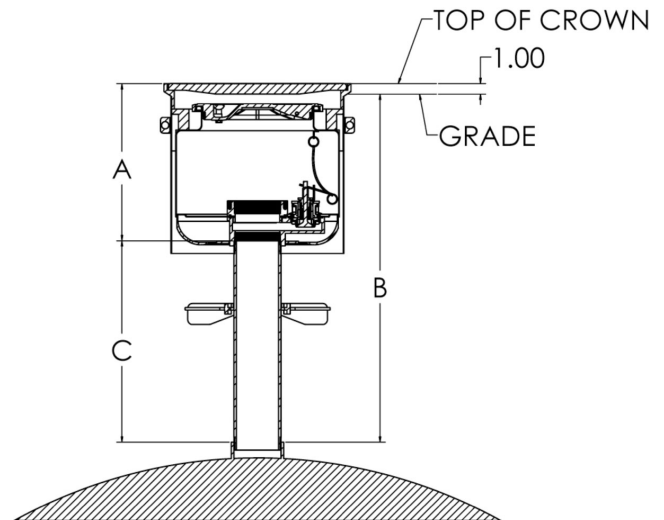
5 gallon install (Dim A = 15.5)

36" from grade to top of tank bung (Dim B)

C = 36" - 15.5" = 20.5"

D = 20.5 + 2" = 22.5"

Cut riser pipe to 22.5"



Step 1: Cut and thread riser pipe using calculations shown above.

Step 2: Install riser pipe into tank bung.

Step 3: Install riser lock:

3a. Loosen the riser lock screws and slip the assembly, over the riser pipe, letting it drop to the top of the tank.

3b. Place gravel pan over the riser pipe and on top of the riser lock.

3c. Thread on spill containment.

3d. Lift gravel pan so that the bottom is flush with bottom of gravel guard. Secure in place with duct tape.

3e. Raise the riser lock so that it is positioned midway from the top of the tank to the bottom of the spill containment. Tighten each screw and lock nut to lock in place.

Step 4: Apply pipe dope to bottom female threads of spill container.

Step 5: Lift the unit by grabbing the inside of the stainless steel can from the top and slip onto the riser pipe.

Step 6: Tighten unit to between 100 and 150 ft.-lbs. using Emco A0081-001 Spill Containment Wrench.

Step 7: Apply pipe dope to female threads inside of spill container.

Step 8: Install pipe nipple inside of spill container.

Step 9: Install adapter and cap per manufacturer's recommendations.

Step 10: Perform testing per state and local regulations.