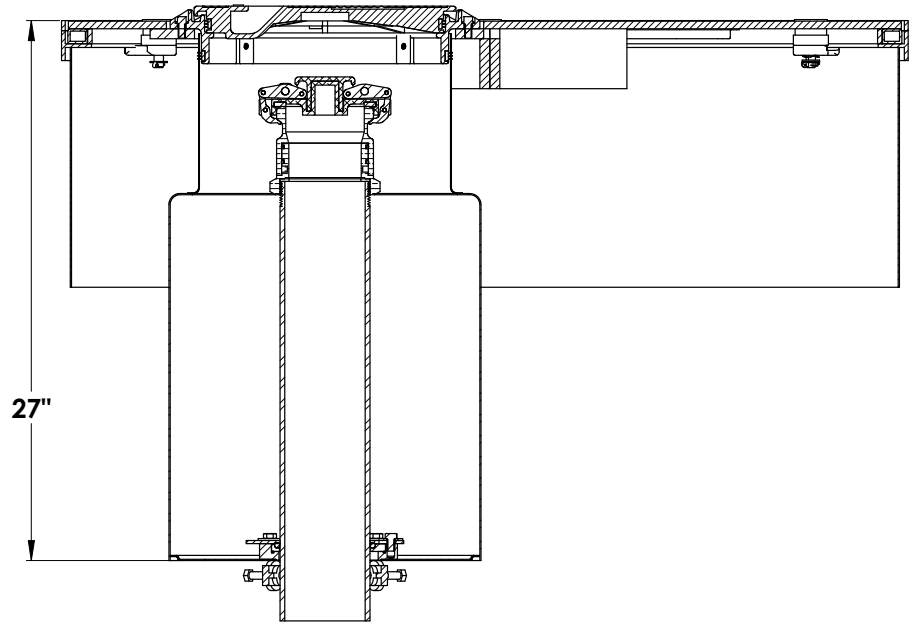


INSTALLATION INSTRUCTIONS

Required Tools:

- 1/2" Socket Wrench
- 3/8" Socket
- 9/16" Socket
- 3/4" Socket
- Emco A0081-001H Wrench



1. Separate the primary rim from the stainless steel bucket
2. Install riser lock onto the riser pipe 27" down from grade. Tighten bolts securely.
3. Place stainless steel bucket over riser pipe.
4. Lay the diamond plate lid into the rim. Center opening over the stainless steel insert.
5. Lock down cam-locks using 3/4" socket
6. Place the bellows gasket provided into the recess in the diamond plate lid.
7. Push the primary rim back into the throat of the stainless steel bucket.



8. Install the small cross section o-ring into groove in the bottom flange of the insert. Make certain groove is clean & free of debris.



9. Place the eccentric ring flange into the recess in the bottom flange.

10. Rotate the stainless bucket and the eccentric ring until the holes in the primary rim line up.



A1008-036B2 A1008-042B15 Multi-Port

11. Install all 8 primary rim bolts loosely.
12. Using a 3/8" socket, tighten rim bolts in a star pattern alternating back & forth.
13. Tighten to 15-20 ft/lbs.



14. Install large cross section o-ring over the riser pipe and into the groove in the bottom of the stainless steel bucket.



15. Install the 3 stainless steel ring flanges over the o-ring using the 3/8" bolts and washers.



16. Tighten to 15-20 ft/lbs.

17. Install drop tube.
18. Install adapter & cap.
19. Hydrostatic Test – perform per local /state requirements.

Tank Operator Responsibilities

Tank operator must ensure that all Federal, Provincial and local codes are being met during the filling of the tank. All operators must be familiar with proper filling procedures. The operator responsible for transferring product to an above ground storage tank must take all reasonable steps to prevent spillage. The delivery hose from the tank's fill pipe must not be disconnected before the hose has been drained completely. When tank vehicles are being unloaded, the vehicle operators must remain (a) in constant view of the transfer nozzle and fill pipe; and (b) in constant attendance at the discharge control valve.

Emco Wheaton Retail

2300 Industrial Park Dr. • Wilson, NC 27893 252-243-0150 • 252-243-4759 (fax)