

It is very important to read and follow these instructions precisely.

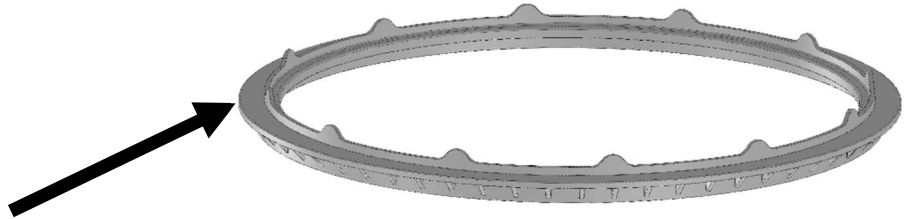
Emco Supplied Parts

- (1) Composite Rim
- (4) Composite Skirts
- (8) 3/8"-16 x 1" Hex Bolts
- (8) 3/8"-16 Hex Nuts
- (12) 3/8" Washers
- (4) Brackets, Steel

Service Tools Required

- 9/16" Socket
- 9/16" Wrench

Step 1: Remove straps. Place rim upside down on work surface.



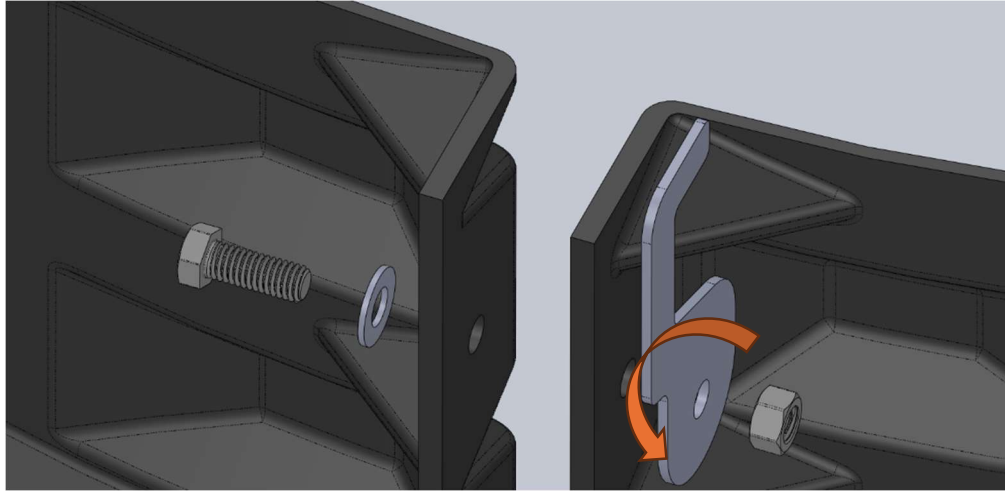
CAUTION: COMPOSITE RIMS ARE DESIGNED FOR VERTICAL COMPRESSION. **DO NOT TOSS/DROP COMPOSITE RIMS ON THE RADIUS,** AS THEY CAN SPALL AND/OR CRACK.

Step 2: Loosely assemble 4 skirt panels, as shown.

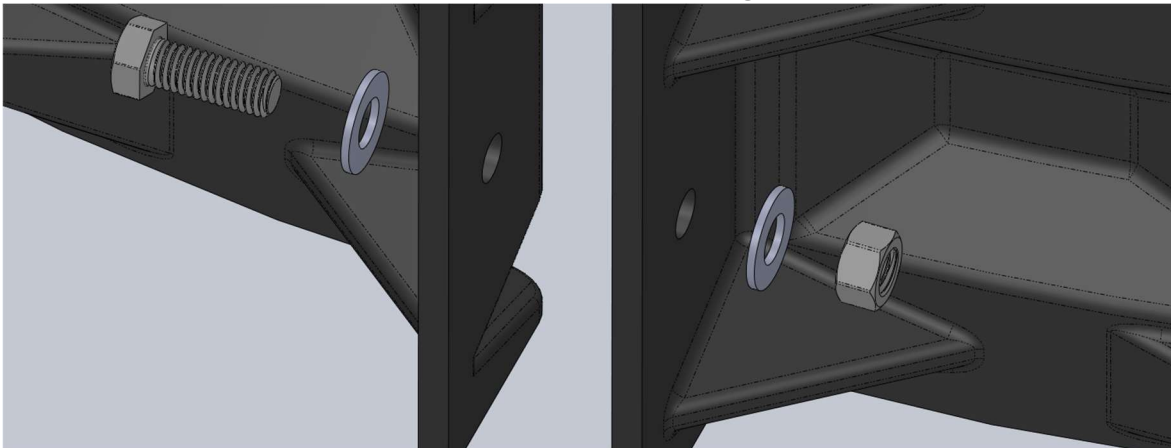


NOTE: RIDGES ON BTM IF DOUBLE STACKING.

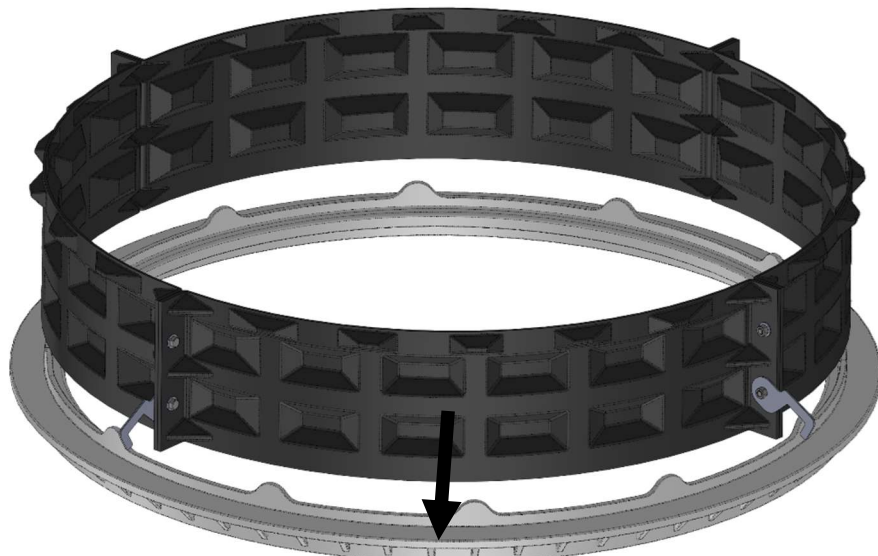
Step 3: Use 1 ea. bolt + washer + bracket + nut on top hole. **Do not tighten nut.** Leave bracket hanging “outward”.



Step 4: Use 1 ea. bolt + 2 ea. washer + 1 ea. nut on bottom hole. **Tighten nut.**



Step 5: Slide skirt onto rim.



Step 6: Push bracket over rim. Tighten nuts. Unit is ready to install.

