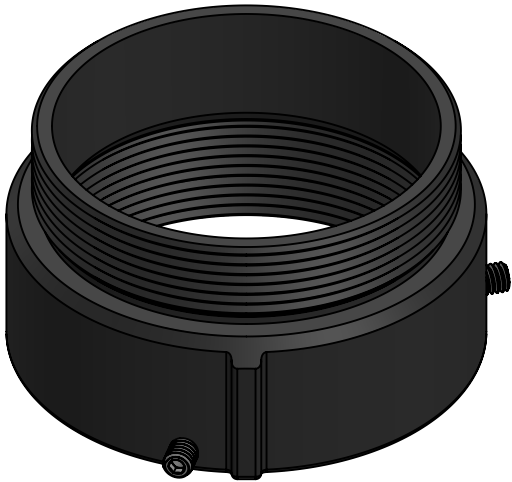
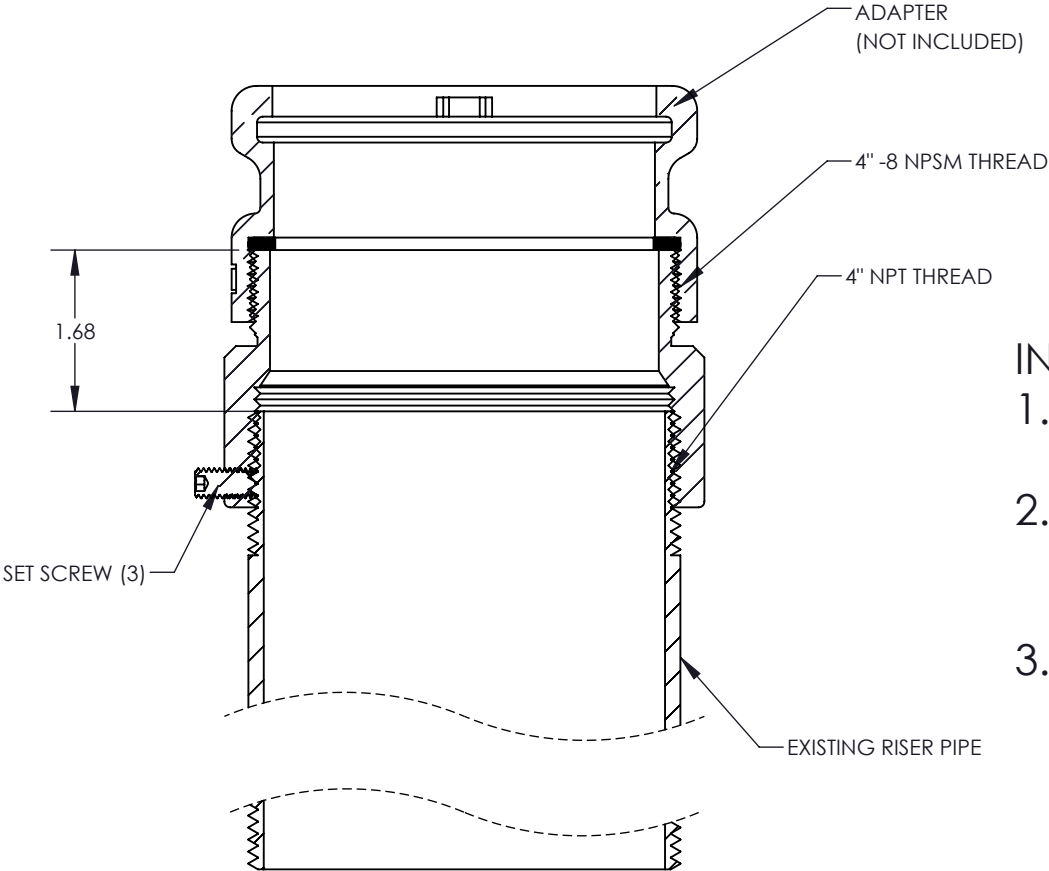


- NOTE:
- 1. ADAPTER MATERIAL: IRON
 - 2. SET SCREW MATERIAL: STAINLESS STEEL
 - 3. SET SCREWS USES 5/32 ALLEN KEY
 - 4. ADAPTER NOT INCLUDED
 - 5. WEIGHT: 3.5 LBS



- INSTRUCTIONS:
- 1. CLEAN EXISTING THREADS WITH WIRE BRUSH
 - 2. APPLY RED LOCK-TITE, OR OTHER SUITABLE LOCKING SEALANT TO 4" NPT THEADS AND SET SCREWS
 - 3. THREAD ONTO EXISTING RISER AND TIGHTEN SET SCREWS

SECTION B-B
SCALE 1 : 2



EMCO WHEATON RETAIL CORP.
2300 INDUSTRIAL PARK DRIVE
WILSON, N.C. 27893
emcoretail.com

DO NOT SCALE DRAWING-WORK TO DIMENSIONS SHOWN
DIMENSIONS ARE IN INCHES (DIMENSIONS IN BRACKETS ARE IN MILLIMETERS)

UNLESS OTHERWISE SPECIFIED

DECIMALS .X ± .030 .XX ± .015 .XXX ± .005 ANGLES ± 1°
CASTING TOLERANCES TO INDUSTRY STANDARDS
MACHINED SURFACES 125 RMS REMOVE ALL BURRS

THE INFORMATION AND DESIGN DISCLOSED
BY AND THE COPYRIGHT IN THIS DRAWING
ARE THE PROPERTY OF EMCO WHEATON
RETAIL CORP. AND CANNOT BE USED
WITHOUT WRITTEN PERMISSION.

DRAWN BY

TBK

USED ON

CASTING NUMBER

D	NOTES MOVED AND TEXT SIZE INCREASED	7/16/2024	TBK
C	NOTES AND INSTRUCTIONS ADDED	6/19/24	TBK
B	WAS 2 SCREWS	7/21/15	GEB
A	MARKETING	10/8/14	GEB
REV.	DESCRIPTION	DATE	BY

PART DESCRIPTION			
RISER REPAIR ADAPTER 4"NPT/4"NPSM X 3.5"			
SIZE	DRAWING NUMBER.	PAGE	REV.
A	A0031-250R	1/1	D