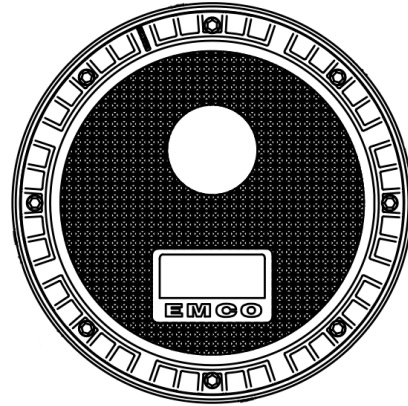


A1004EVR-317A7

Single Wall Poly

Spill Containment



Specifications

- Replaceable; easily repair or replace primary unit from grade without breaking concrete
- 5 gal capacity
- Screw-on
- Weights: Lid: 15.9 lbs; Total: 63 lbs

Materials

- Stainless steel rim
- Cast iron lid; water resistant with built-in handle, exclusive triple wiper seal and vent valve

Application

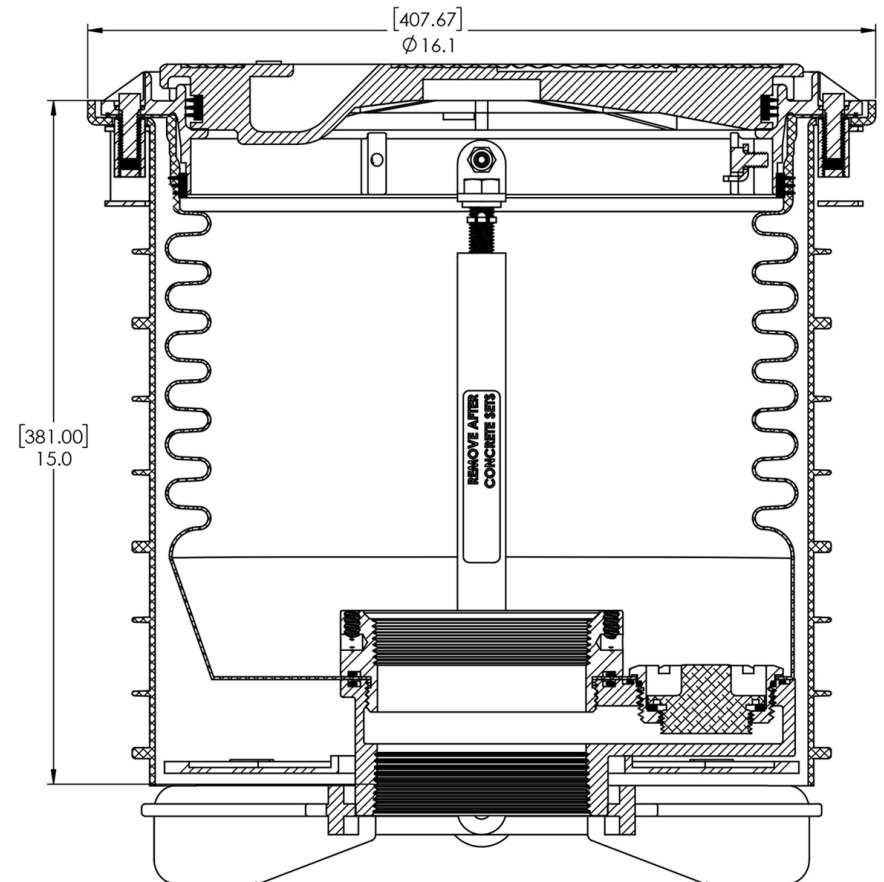
- Grade level
- Installs 16" on center

Components

- Removable drain plug

Approvals

- Phase I EVR Executive Order VR-105
- ULC Listed MH21149
- FL DEP # EQ-741
- NC DENR
- MO DNR
- Lid meets H20 Load Rating



© 2020 Emco Wheaton Retail Corporation

EMCO®

EMCO WHEATON RETAIL CORPORATION
2300 INDUSTRIAL PARK DRIVE
WILSON, N.C. 27893

DO NOT SCALE DRAWING—WORK TO DIMENSIONS SHOWN
DIMENSIONS ARE IN INCHES (DIMENSIONS IN BRACKETS ARE IN MILLIMETERS)

UNLESS OTHERWISE SPECIFIED

DECIMALS ANGLES
.X ± .030 .XX ± .015 .XXX ± .005 ± 1°

CASTING TOLERANCES TO INDUSTRY STANDARDS
MACHINED SURFACES 125 RMS REMOVE ALL BURRS

THE INFORMATION AND DESIGN DISCLOSED BY AND
THE COPYRIGHT IN THIS DRAWING ARE THE
PROPERTY OF EMCO WHEATON RETAIL CORP. AND
CANNOT BE USED WITHOUT WRITTEN PERMISSION.

DRAWN BY	DATE	USED ON
GEB	5/6/20	N/A
CHECKED BY	DATE	PROJECT NUMBER
APPROVED BY	DATE	SCALE
		N/A
MATERIAL		WEIGHT
	CASTING NUMBER	

A	MARKETING	5/6/20	GEB
SYM	REVISIONS	DATE	BY

PART NAME
**SW 5 GAL NO DRAIN
SST RIM; CAST LID**

SIZE	DRAWING NUMBER	REV.
	D A1004EVR-317A7	A