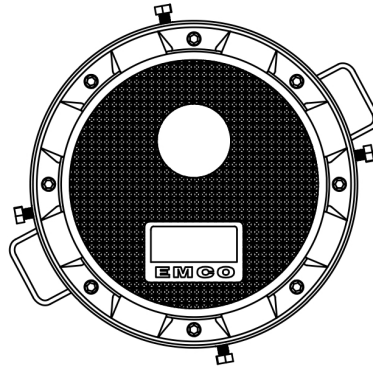


A1004EVR-317S

Double Wall Poly/Poly Spill Containment



Specifications

- Replaceable; easily repair or replace primary & secondary units from grade without breaking concrete
- 5 gal capacity
- Screw-on
- Weights: Lid: 15.9 lbs; Total: 80 lbs

Materials

- Cast iron rim
- Cast iron lid; water resistant with built-in handle, exclusive triple wiper seal and vent valve

Application

- Grade level
- Installs 16" on center

Components

- EZ-Gage to monitor interstitial space at a glance
- Removable drain plug

Approvals

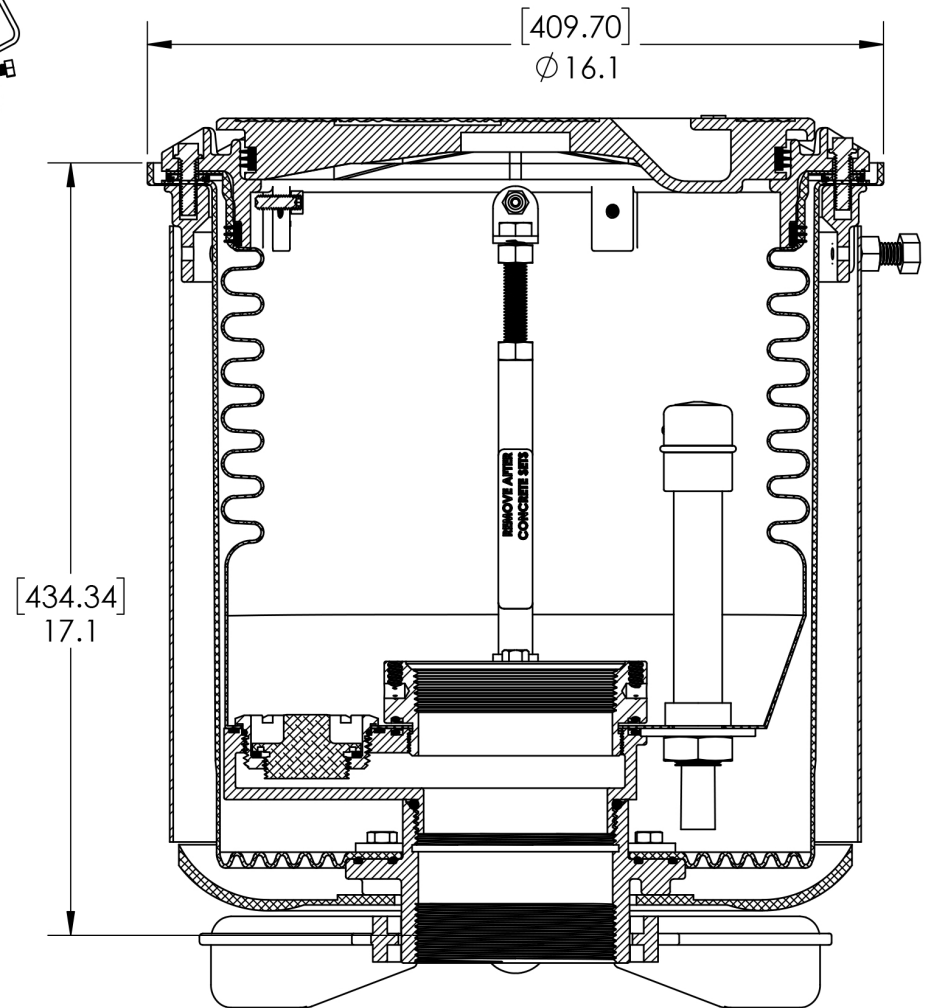
- Phase I EVR Executive Order VR-105
- ULC Listed MH21149
- FL DEP # EQ-741
- NC DENR
- MO DNR
- Lid meets H20 Load Rating

Color Variant Part Numbers

Model No.	Rim/Lid	Adapter/Cap
A1004EVR-317S	Black	N/A
A1004EVR-317S-D	Yellow	N/A
A1004EVR-317S-R	White	N/A
A1004EVR-317S-U	Red	N/A
A1004EVR-317SV*	Black	Vapor
A1004EVR-317SX**	Black	Fill
A1004EVR-317SX-D**	Yellow	Fill
A1004EVR-317SX-R**	White	Fill
A1004EVR-317SX-U**	Red	Fill

*Includes A0076-124S Vapor Swivel Adapter and A0099-002 Vapor Cap

**Includes A0030-124S Fill Swivel Adapter and A0097-005 Fill Cap



© 2019 Emco Wheaton Retail Corporation

EMCO® EMCO WHEATON RETAIL CORPORATION
2300 INDUSTRIAL PARK DRIVE
WHEATON RETAIL WILSON, NC 27893

DO NOT SCALE DRAWING-WORK TO DIMENSIONS SHOWN
DIMENSIONS ARE IN INCHES (DIMENSIONS IN BRACKETS ARE IN MILLIMETERS)

UNLESS OTHERWISE SPECIFIED
DECIMALS ANGLES
.X ± .030 .XX ± .015 .XXX ± .005 ± 1°
CASTING TOLERANCES TO INDUSTRY STANDARDS MACHINED SURFACES 125 RMS REMOVE ALL BURRS

THE INFORMATION AND DESIGN DISCLOSED BY AND THE COPYRIGHT IN THIS DRAWING ARE THE PROPERTY OF EMCO WHEATON RETAIL CORP. AND CANNOT BE USED WITHOUT WRITTEN PERMISSION.

DRAWN BY NPC	DATE 1/6/2016	USED ON
CHECKED BY	DATE	PROJECT NUMBER
APPROVED BY	DATE	SCALE N/A
MATERIAL SEE NOTE	WEIGHT	CASTING NUMBER

SYM	REVISIONS	DATE	BY
PART NAME DOUBLE WALL EVR SPILL CONTAINMENT NO DRAIN			
SIZE	DRAWING NUMBER	PAGE	REV
A	A1004EVR-317S	1 OF 1	C