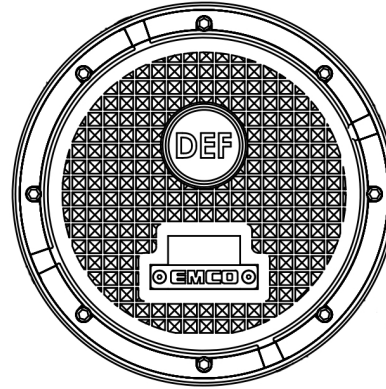


A1005-517AW-DEF

Single Wall Stainless Steel Spill Containment



Specifications

- Replaceable; easily repair or replace primary unit from grade without breaking concrete
- 5 gal capacity
- Slip-on
- Weights: Lid: 15.9 lbs; Total: 59 lbs

Materials

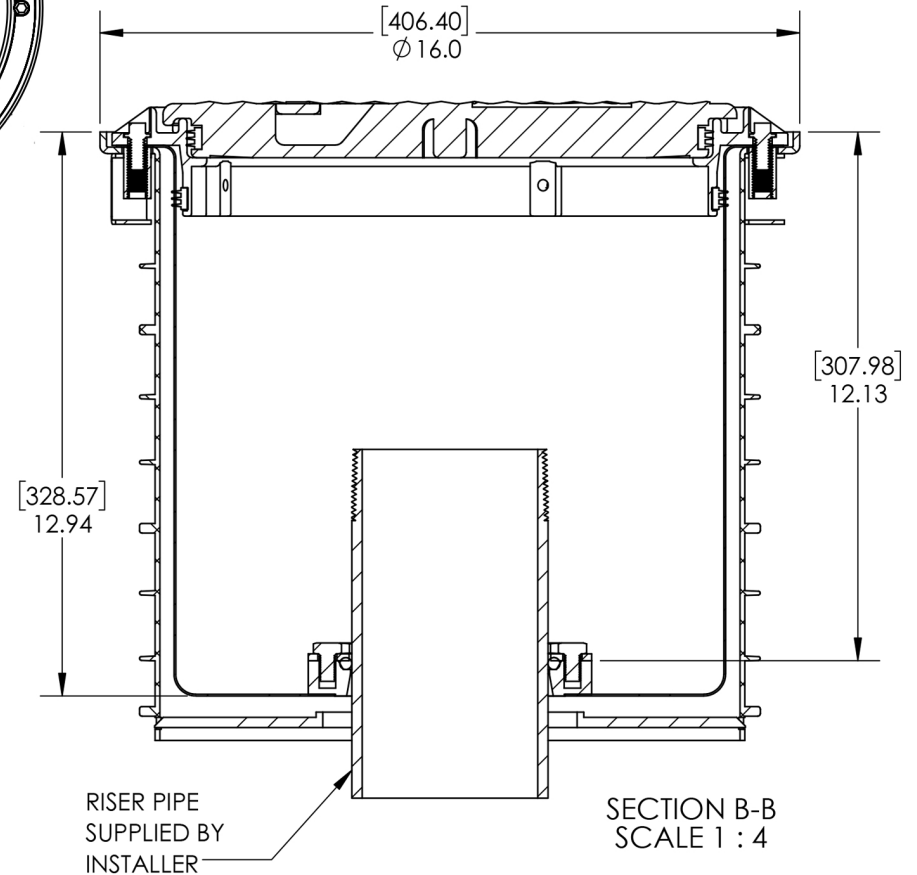
- Stainless steel rim with composite blue segments
- Composite water resistant lid with built-in handle, exclusive triple wiper seal and vent valve; DEF blue with DEF ID tag
- Nitrile seals

Application


- Grade level
- Installs 16" on center

Approvals

- ULC Listed MH21149
- FL DEP # EQ-524
- Lid meets H20 Load Rating



© 2019 Emco Wheaton Retail Corporation

		EMCO WHEATON RETAIL CORP. 2300 INDUSTRIAL PARK DRIVE WILSON, N.C. 27893 emcoretail.com			
		DO NOT SCALE DRAWING-WORK TO DIMENSIONS SHOWN DIMENSIONS ARE IN INCHES (DIMENSIONS IN BRACKETS ARE IN MILLIMETERS)			
UNLESS OTHERWISE SPECIFIED DECIMALS .X ± .030 .XX ± .015 .XXX ± .005 ANGLES ± 1° CASTING TOLERANCES TO INDUSTRY STANDARDS MACHINED SURFACES 125 RMS REMOVE ALL BURRS		THE INFORMATION AND DESIGN DISCLOSED BY AND THE COPYRIGHT IN THIS DRAWING ARE THE PROPERTY OF EMCO WHEATON RETAIL CORP. AND CANNOT BE USED WITHOUT WRITTEN PERMISSION.			
DRAWN BY	DATE	USED ON	CASTING NUMBER		
GEB	1/30/18	N/A			
A MARKETING		1/30/19 GEB			
SYM REVISIONS		DATE BY			
PART DESCRIPTION					
SST SW SLIP-ON, COMPOSITE LID FOR DEF					
SIZE	DRAWING NUMBER.	PAGE	REV.		
A	A1005-517AW-DEF	1/1	A		