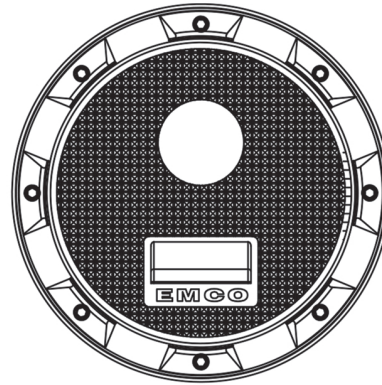


A1005-518A

Single Wall Stainless Steel Spill Containment



Specifications

- Replaceable; easily repair or replace primary unit from grade without breaking concrete
- 5 gal capacity
- Screw-on
- Weights: Lid: 6.6 lbs; Total: 98 lbs

Materials

- Cast iron rim
- Cast iron water resistant lid with built-in handle, exclusive triple wiper seal and vent valve

Application

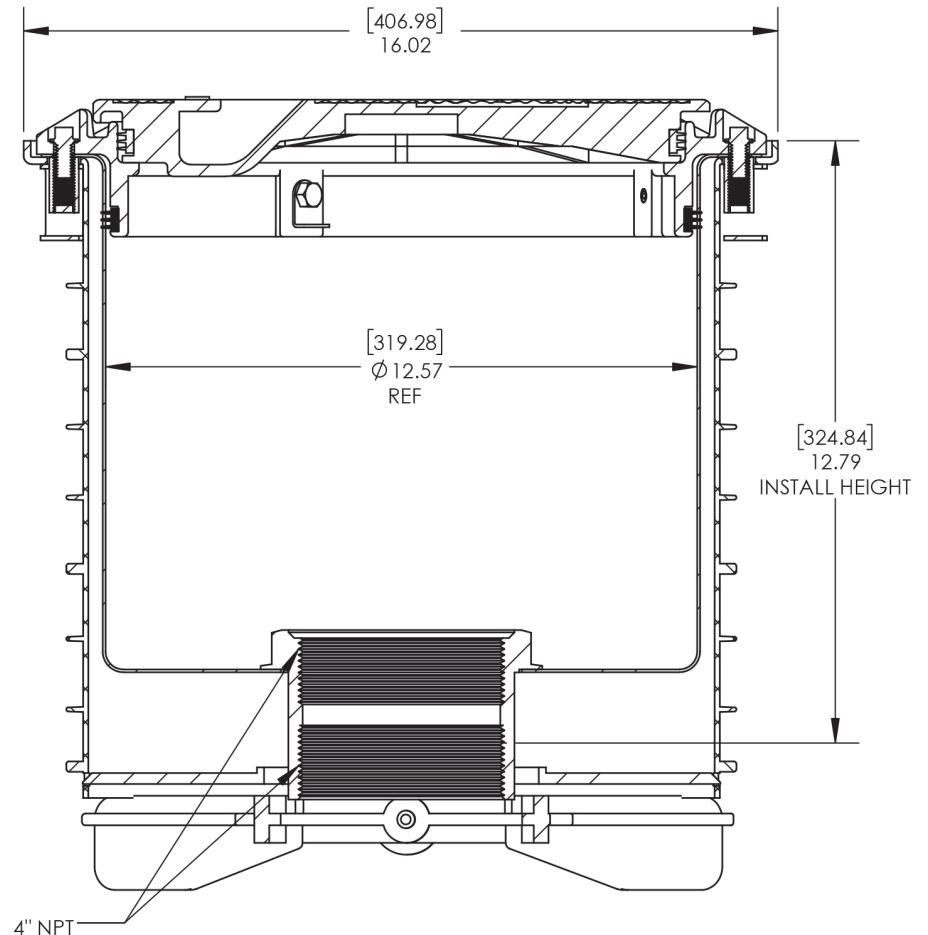
- Grade level
- Installs 16" on center

Components

- Welded base

Approvals

- ULC Listed MH21149
- FL DEP # EQ-524
- Lid meets H20 Load Rating



© 2019 Emco Wheaton Retail Corporation

EMCO® EMCO WHEATON RETAIL CORPORATION
 2300 INDUSTRIAL PARK DRIVE
 WHEATON RETAIL WILSON, NC 27893

DO NOT SCALE DRAWING-WORK TO DIMENSIONS SHOWN
 DIMENSIONS ARE IN INCHES (DIMENSIONS IN BRACKETS ARE IN MILLIMETERS)

UNLESS OTHERWISE SPECIFIED		DRAWN BY	DATE	USED ON
DECIMALS	ANGLES	GEB	2/15/17	
.X ± .030	.XX ± .015	CHECKED BY	DATE	PROJECT NUMBER
.XXX ± .005	± 1°	APPROVED BY	DATE	SCALE
CASTING TOLERANCES TO INDUSTRY STANDARDS MACHINED SURFACES 125 RMS REMOVE ALL BURRS				N/A
WEIGHT		MATERIAL	CASTING NUMBER	
THE INFORMATION AND DESIGN DISCLOSED BY AND THE COPYRIGHT IN THIS DRAWING ARE THE PROPERTY OF EMCO WHEATON RETAIL CORP. AND CANNOT BE USED WITHOUT WRITTEN PERMISSION.		N/A		

SYM	REVISIONS	DATE	BY
PART NAME			
SW SST SPILL CONT. THREAD-ON			
16" CENTER			
SIZE	DRAWING NUMBER	PAGE	REV
A	A1005-518A	1 OF 1	B